

17 Archer Close

Coopersale, Essex

Guide Price £700,000

A bright and beautiful four bedroom home sitting on the quiet turning of Archer Close, Coopersale.

Council Tax band: F

Tenure: Freehold

- FOUR DOUBLE BEDROOMS
- OFF ROAD PARKING
- DETACHED FAMILY HOME
- MODERN DEVELOPMENT BUILT IN 2018
- EN-SUITE TO MASTER BEDROOM
- UTILITY ROOM
- SPACIOUS LOUNGE
- HOME OFFICE/GARAGE



Hallway

18' 6" x 3' 6" (5.64m x 1.06m)

Kitchen/ Diner

10' 1" x 17' 4" (3.07m x 5.29m)

Wc

5' 4" x 5' 4" (1.63m x 1.63m)

Utility Room

5' 4" x 6' 5" (1.62m x 1.96m)

Lounge

11' 10" x 19' 9" (3.60m x 6.02m)

Landing

13' 5" x 3' 3" (4.10m x 1.00m)

Master Bedroom

12' 11" x 9' 7" (3.93m x 2.91m)

Fitted Wardrobes

En-Suite Shower Room

5' 0" x 3' 7" (1.53m x 1.10m)

Bedroom 2

10' 10" x 9' 6" (3.31m x 2.90m)

Currently a walk in wardrobe

Bedroom 3

8' 7" x 10' 8" (2.62m x 3.25m)

Bedroom 4

8' 4" x 9' 11" (2.55m x 3.01m)

Window to rear

Bathroom

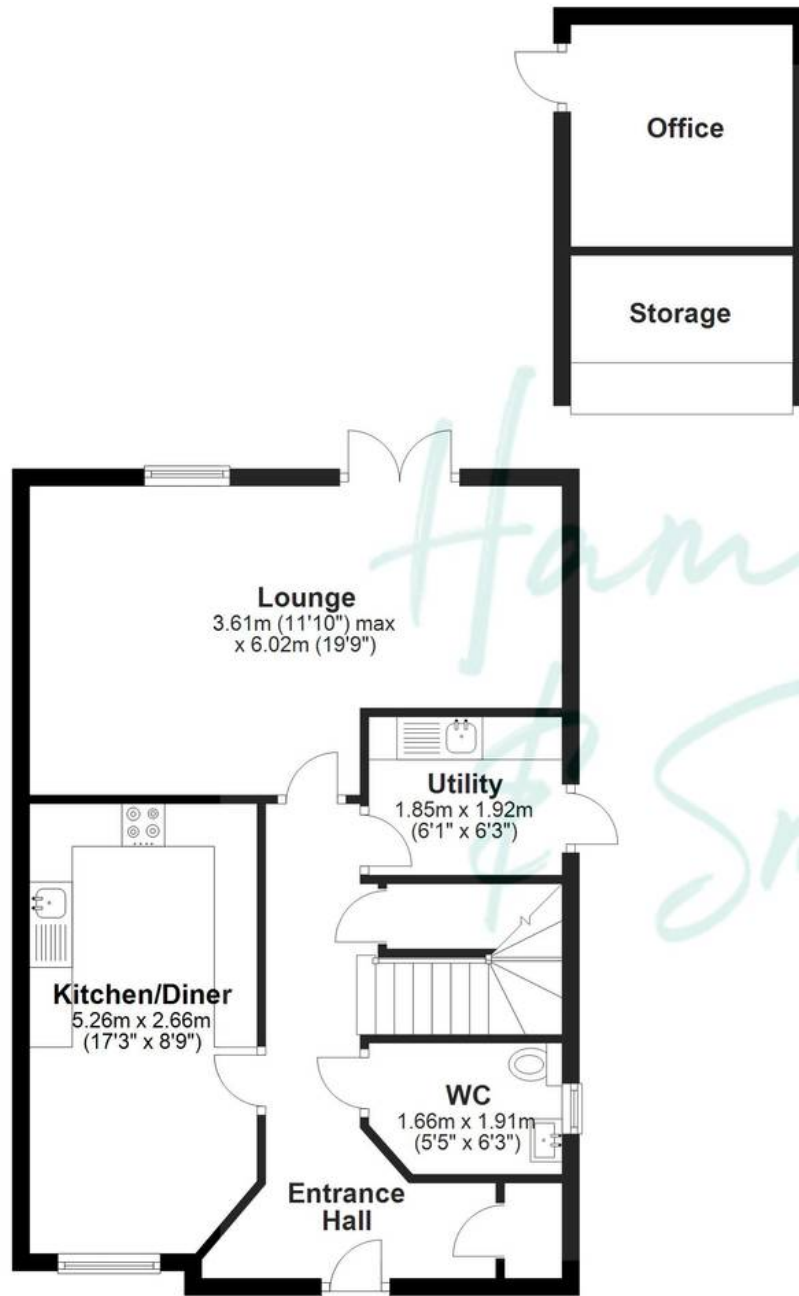
6' 8" x 5' 7" (2.04m x 1.70m)

Bath, vanity unit and Wc

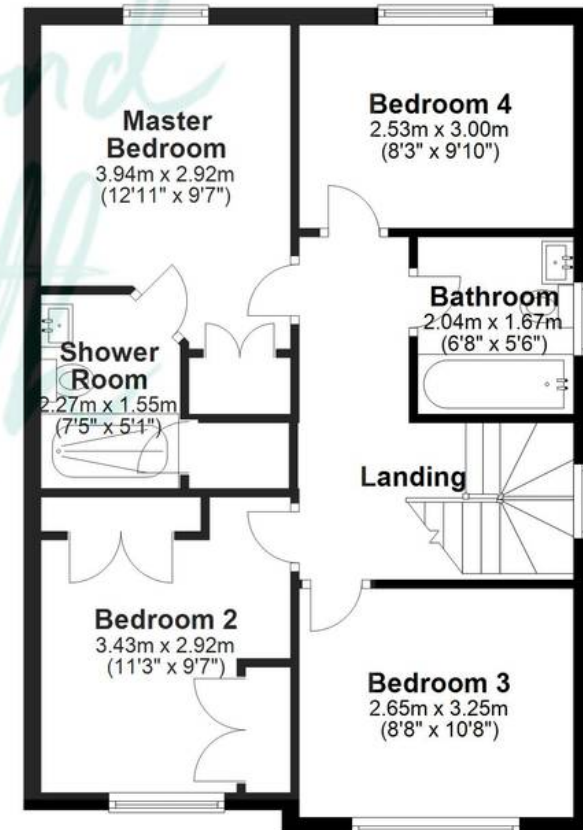




Ground Floor



First Floor



Total area: approx. 113.8 sq. metres (1225.1 sq. feet)

Floorplans are provided for guidance only. They are not to scale & must not form any part of a legal contract or be reproduced
Plan produced using PlanUp.