

# 9 Hemnall Mews Hemnall Street

Epping, Epping

Council Tax band: E

Tenure: Leasehold

- GROUND FLOOR APARTMENT
- UNDERGROUND PARKING
- TOWN CENTRE LOCATION
- CLOSE TO STATION
- CHAIN FREE
- TWO DOUBLE BEDROOMS
- THREE BATHROOMS
- MODERN DECORE



**Hallway**

19' 4" x 3' 7" (5.90m x 1.10m)

**Lounge/Diner**

18' 1" x 16' 9" (5.50m x 5.10m)

This room measures 5.5m x 5.1 > 3.36

**Kitchen**

9' 5" x 8' 1" (2.88m x 2.46m)

**Bedroom One**

17' 11" x 11' 4" (5.46m x 3.46m)

**En-suite Shower Room**

6' 0" x 5' 9" (1.84m x 1.76m)

**Bedroom Two**

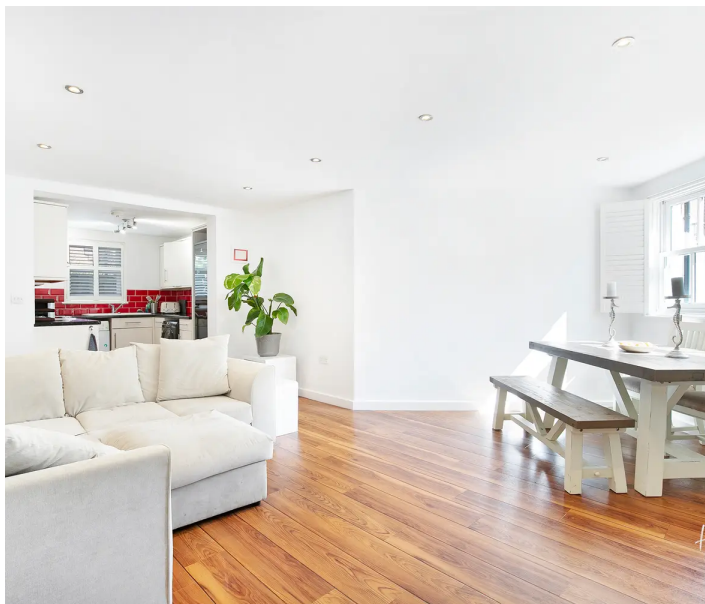
10' 10" x 11' 6" (3.31m x 3.51m)

**En-suite Shower Room**

5' 1" x 5' 10" (1.55m x 1.79m)

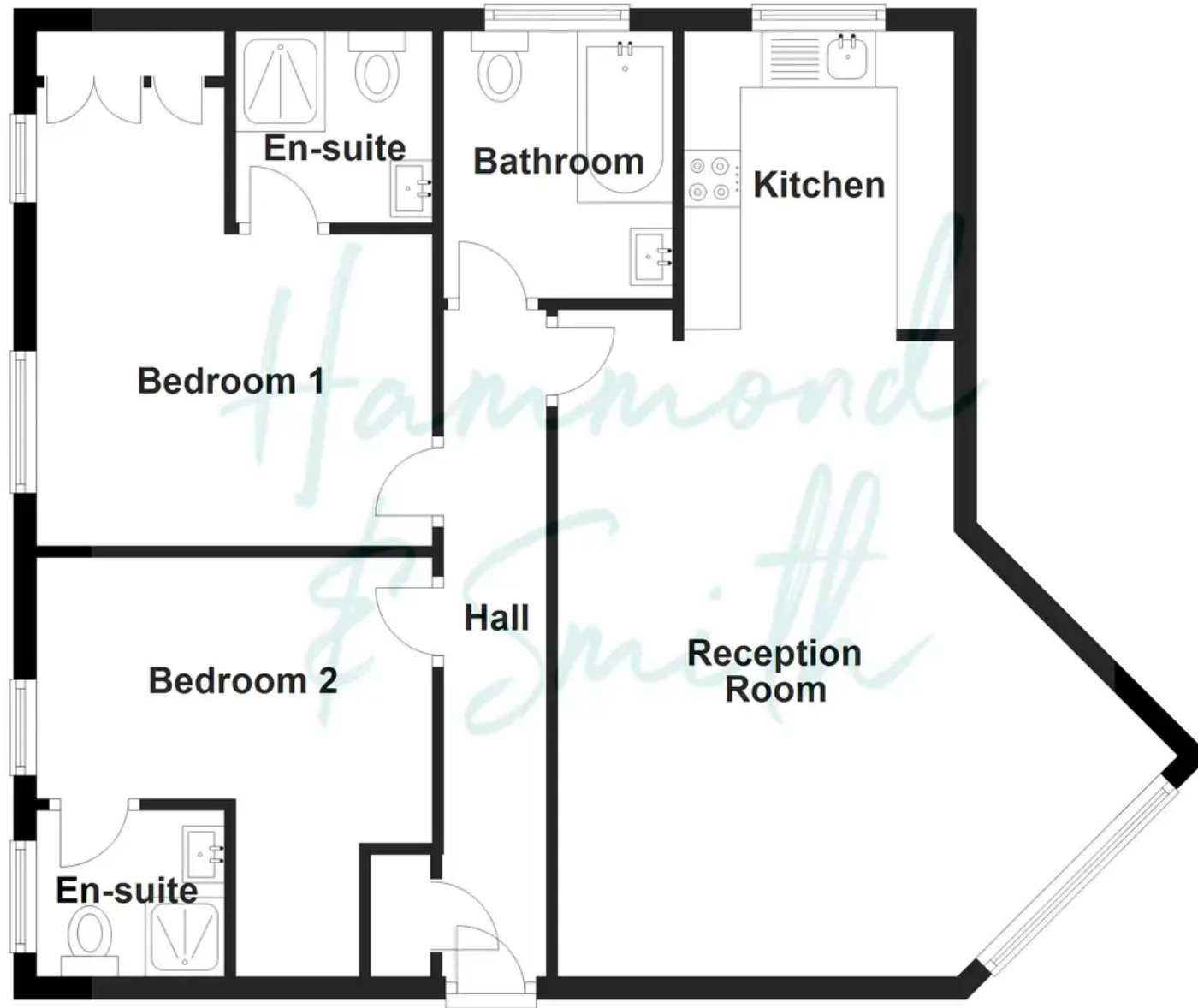
**Bathroom**

7' 9" x 6' 8" (2.36m x 2.02m)





# Ground Floor



Floorplans are provided for guidance only. They are not to scale & must not form any part of a legal contract or be reproduced  
Plan produced using PlanUp.