

19 Western Avenue

Epping, Epping

Council Tax band: D

Tenure: Freehold

- CHAIN FREE
- OVER LOOKING FIELDS TO REAR
- UTILITY ROOM & WC
- MODERN KITCHEN
- CLOSE TO IVY CHIMNEYS SCHOOL
- SHORT WALK TO STATION
- BISF CONSTRUCTION



Lounge

11' 11" x 20' 9" (3.64m x 6.33m)

Kitchen

8' 5" x 20' 9" (2.57m x 6.33m)

Utility Room**Wc****First Floor**

3' 3" x 3' 3" (1m x 1m)

Bedroom One**Bedroom Two**

8' 6" x 13' 7" (2.6m x 4.13m)

Bedroom Three

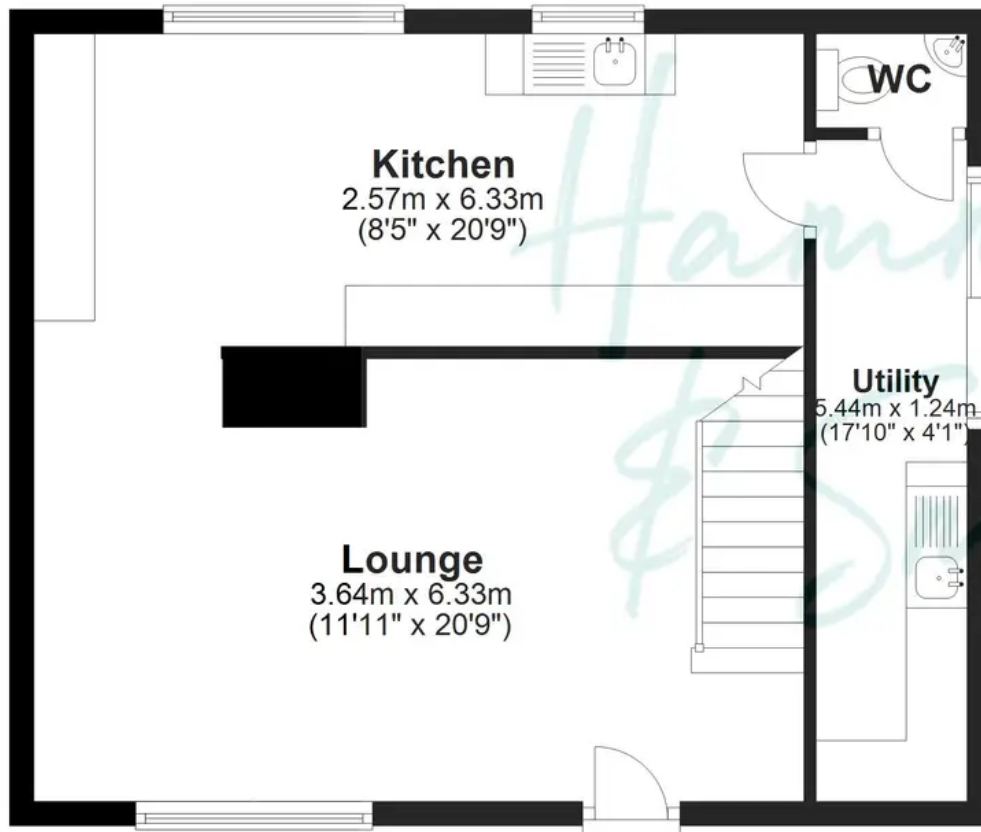
9' 2" x 8' 7" (2.8m x 2.62m)

Bathroom



Ground Floor

Approx. 48.4 sq. metres (520.9 sq. feet)



First Floor

Approx. 40.0 sq. metres (430.9 sq. feet)



Total area: approx. 88.4 sq. metres (951.9 sq. feet)

Floorplans are provided for guidance only. They are not to scale & must not form any part of a legal contract or be reproduced
Plan produced using PlanUp.