

19 Mowbray Close

Epping, Epping

Welcome to this stylish and cosy three bedroom end terrace home situated in Mowbray Close, within Epping's award winning Arboretum development. Council Tax band: E

Tenure: Freehold

- END TERRACE TOWN HOUSE
- GARAGE
- DRIVEWAY PARKING
- OPEN PLAN KITCHEN / DINER
- MASTER BEDROOM WITH LARGE BALCONY SPACE
- EXTRA ALLOCATED PARKING BAY



Kitchen/Dining Room

20' 8" x 15' 6" (6.30m x 4.72m)

Garage

17' 3" x 8' 6" (5.26m x 2.59m)

WC

Living Room

9' 5" x 15' 6" (2.87m x 4.72m)

Bedroom 3

12' 3" x 15' 6" (3.73m x 4.72m)

Bathroom

6' 4" x 6' 8" (1.93m x 2.03m)

Bedroom 2

10' 7" x 15' 6" (3.23m x 4.72m)

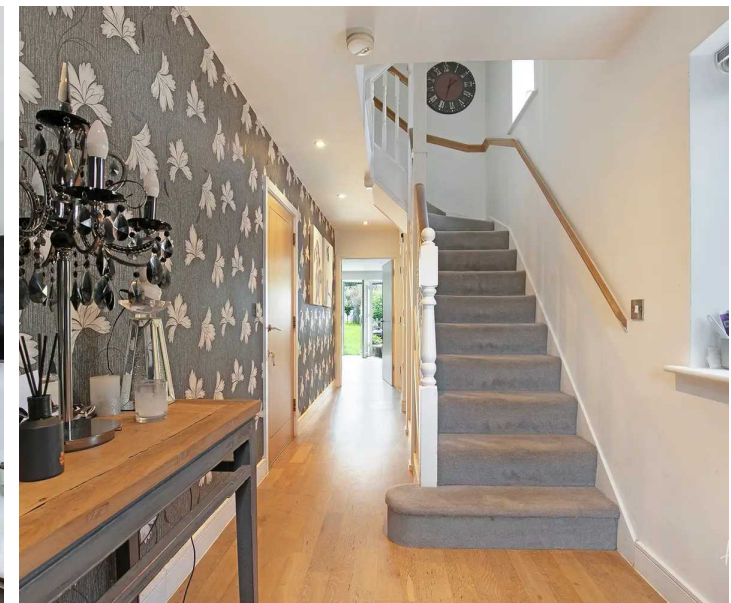
En-suite Bathroom

Bedroom 1

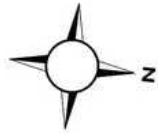
10' 7" x 15' 6" (3.23m x 4.72m)

Shower Room

5' 11" x 5' 7" (1.80m x 1.70m)

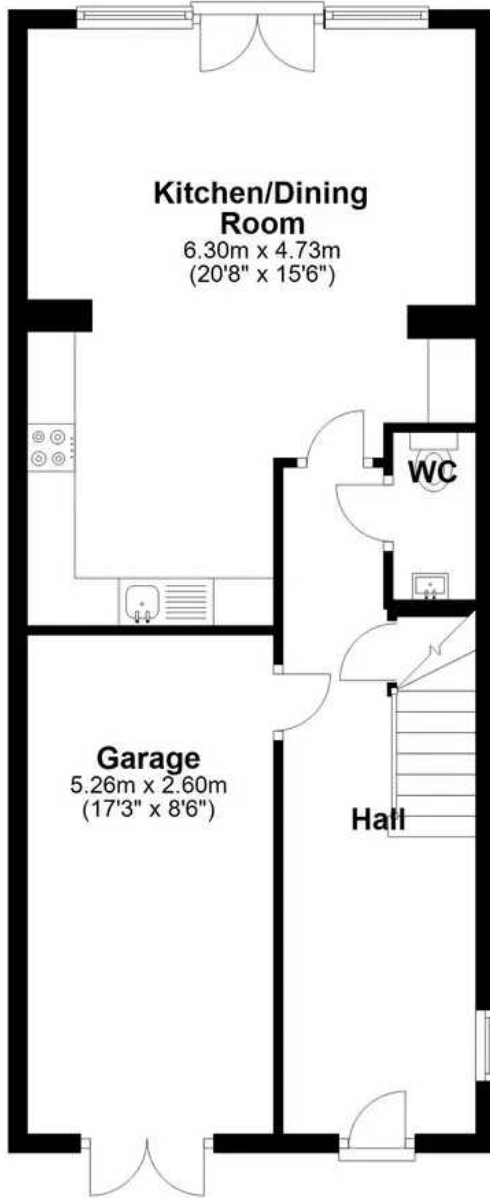






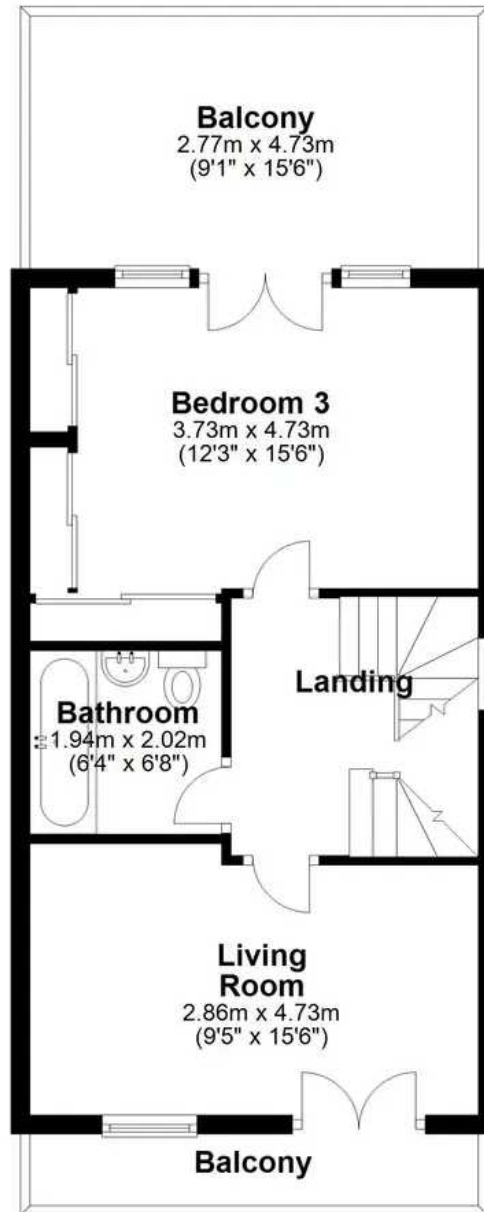
Ground Floor

Approx. 55.1 sq. metres (593.2 sq. feet)



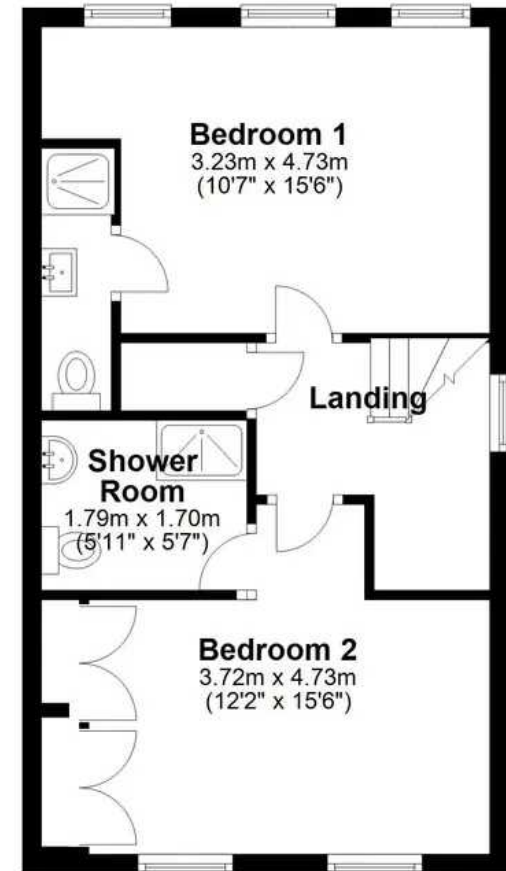
First Floor

Approx. 41.2 sq. metres (444.0 sq. feet)



Second Floor

Approx. 42.4 sq. metres (456.0 sq. feet)



Total area: approx. 138.7 sq. metres (1493.2 sq. feet)