

24 Rahn Road

Epping, Epping

Council Tax band: E

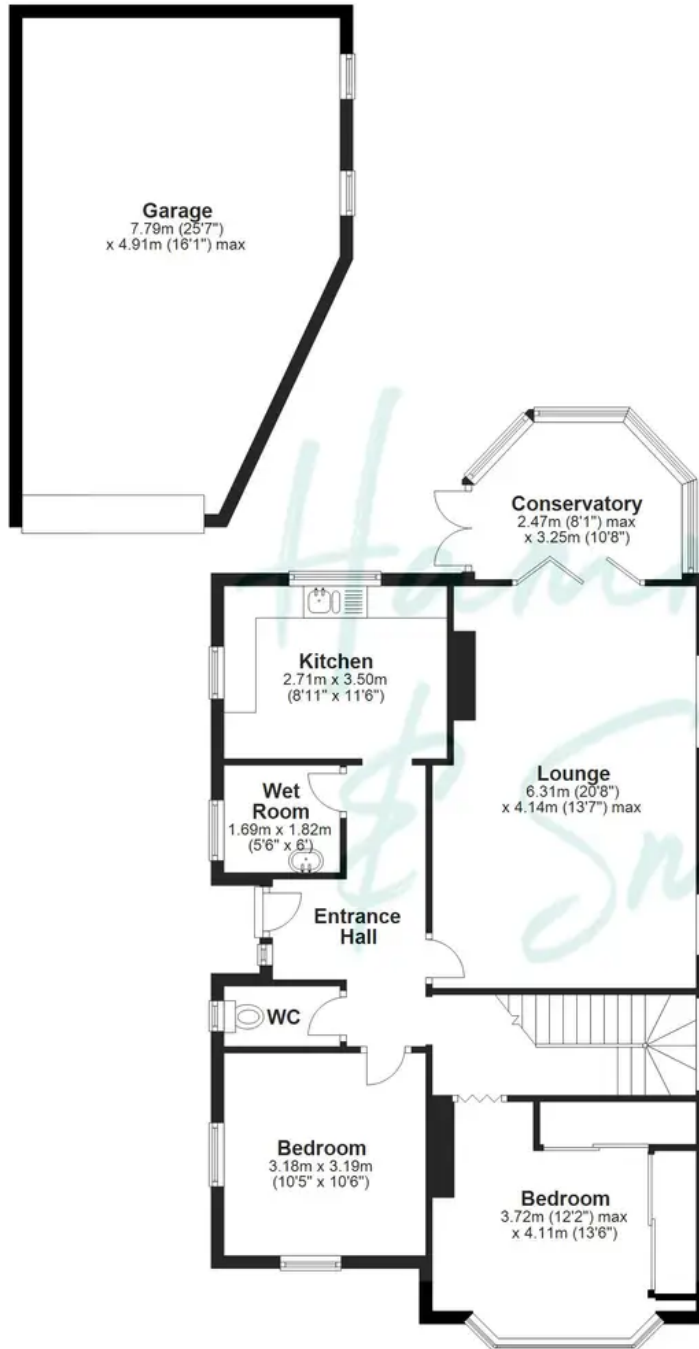
Tenure: Freehold

- EXTRA LARGE GARDEN
- CUL DE SAC
- CLOSE TO STATION
- CLOSE TO HIGH STREET
- IDEAL DOWNSIZE LOCATION
- SPACIOUS LOUNGE/DINER
- CHAIN FREE
- MODERN KITCHEN
- RARE TO MARKET
- SHOWER ROOM





Ground Floor



First Floor



Total area: approx. 144.3 sq. metres (1553.7 sq. feet)

Floorplans are provided for guidance only. They are not to scale & must not form any part of a legal contract or be reproduced
Plan produced using PlanUp.