

# 68 London Road

Abridge, Romford

Beautiful inside and out, with six bedrooms, three ensuites, oodles of space and breath-taking garden views. Tucked away in desirable Abridge, this double-fronted family home is one to fall in love with.

Tenure: Freehold

- GATED DRIVEWAY
- IMPRESSIVE FAMILY HOME
- LARGE REAR GARDEN OVERLOOKING FARMLAND
- MODERN FITTED KITCHEN
- FOUR MODERN BATHROOMS
- GAS CENTRAL HEATING
- SPACIOUS MASTER SUITE
- PLAYROOM/ OFFICE
- SPACIOUS HOME IN EXCESS OF 3000 SQFT



**Living Room**

17' 7" x 22' 7" (5.37m x 6.88m)

**Kitchen/ Diner**

31' 4" x 12' 1" (9.54m x 3.68m)

**Utility Room**

10' 2" x 12' 6" (3.10m x 3.81m)

**Study**

10' 9" x 8' 10" (3.27m x 2.70m)

**Wc**

**Master Bedroom**

16' 7" x 12' 4" (5.05m x 3.76m)

**Dressing Room**

12' 4" x 8' 10" (3.76m x 2.69m)

**En-suite Bathroom**

10' 3" x 8' 10" (3.12m x 2.69m)

**Bedroom Two**

20' 9" x 12' 0" (6.33m x 3.65m)

**En-suite**

8' 11" x 10' 4" (2.72m x 3.16m)

**Bedroom Three**

13' 3" x 13' 2" (4.03m x 4.02m)

**En-suite Shower Room**

5' 6" x 8' 10" (1.67m x 2.69m)

**Bedroom Four**

17' 2" x 20' 8" (5.23m x 6.29m)

**Bedroom Five**

25' 4" x 9' 9" (7.73m x 2.96m)

**Bedroom Six**

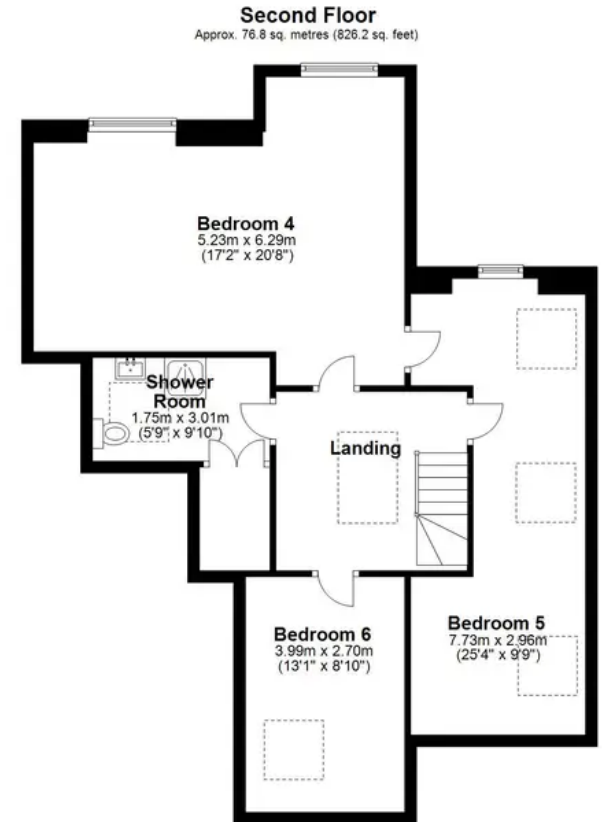
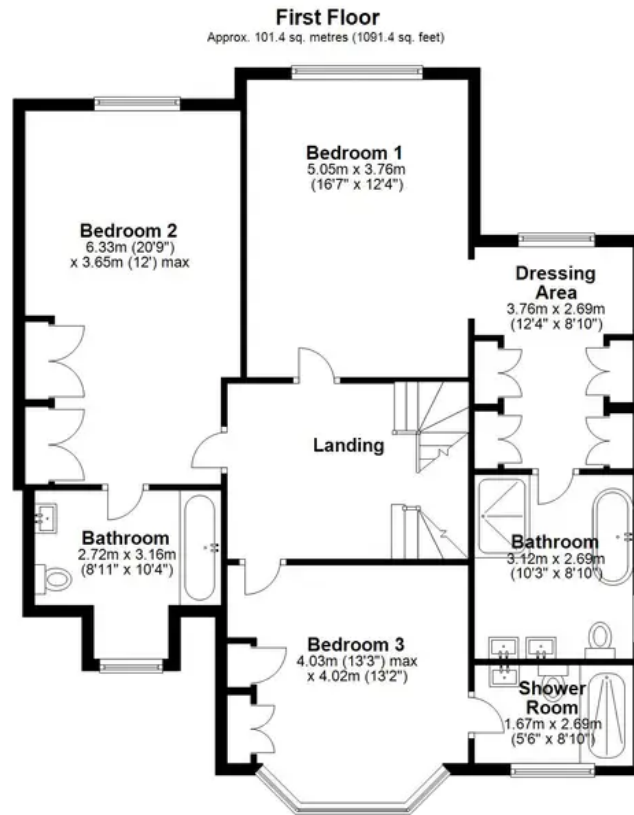
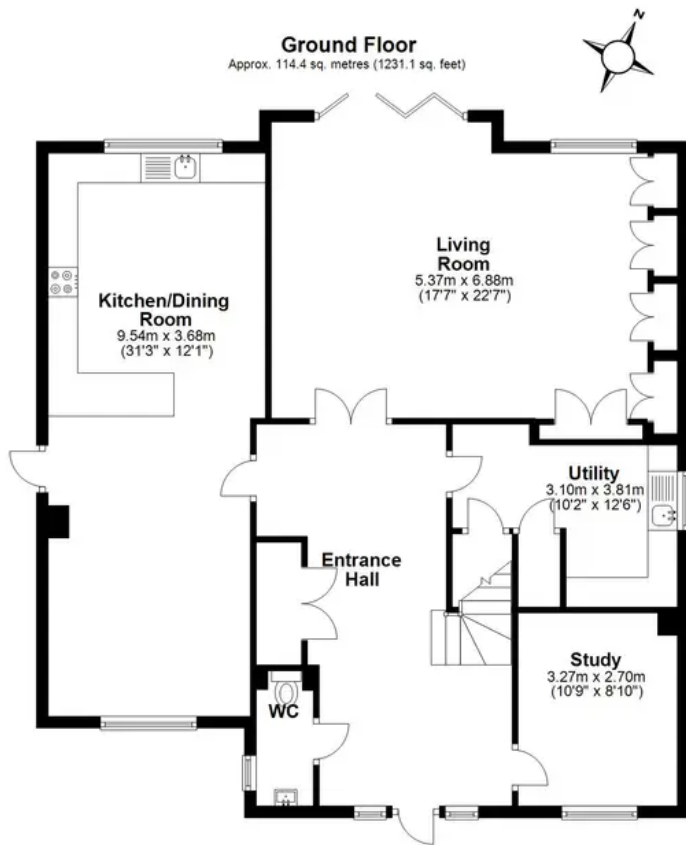
13' 1" x 8' 10" (3.99m x 2.70m)

**Shower Room**

5' 9" x 9' 11" (1.75m x 3.01m)







Total area: approx. 292.5 sq. metres (3148.7 sq. feet)