

Little Cam Mill Street

Harlow, Harlow

Nestled along Mill Street, on the border of Harlow and Hastingwood, sits this superbly spacious three bedroom chalet bungalow. With a fabulous top floor master bedroom, double garage, two ensuites and a superb rear garden, it's your very own peaceful retreat.

Council Tax band: E

Tenure: Freehold

- DOUBLE GARAGE
- GATED DRIVEWAY PARKING
- MASTER BEDROOM WITH WALK IN WARDROBE AND EN-SUITE
- 2 GROUND FLOOR BEDROOMS AND FAMILY BATHROOM
- OPEN PLAN KITCHEN / DINER WITH SEPERATE UTILITY ROOM
- JUST UNDER 3000sqft OF LIVING
- SHORT DISTANCE TO M11 ROUND



Double Garage

19' 1" x 20' 0" (5.82m x 6.10m)

Living

14' 11" x 17' 3" (4.55m x 5.26m)

Dining Room

17' 4" x 9' 11" (5.28m x 3.02m)

Kitchen/Breakfast Room

22' 8" x 14' 3" (6.91m x 4.34m)

Utility Room

22' 8" x 5' 7" (6.91m x 1.70m)

Bedroom 2

12' 10" x 12' 0" (3.91m x 3.66m)

Bedroom 1

14' 11" x 13' 9" (4.55m x 4.19m)

Bathroom

7' 9" x 5' 8" (2.36m x 1.73m)

Shower room

9' 4" x 3' 0" (2.84m x 0.91m)

Bedroom / Lounge area

20' 6" x 17' 6" (6.25m x 5.33m)

Study Area

18' 5" x 7' 7" (5.61m x 2.31m)

Bedroom 3

20' 6" x 16' 6" (6.25m x 5.03m)

Dressing Room

20' 6" x 11' 5" (6.25m x 3.48m)

En Suite Shower Room

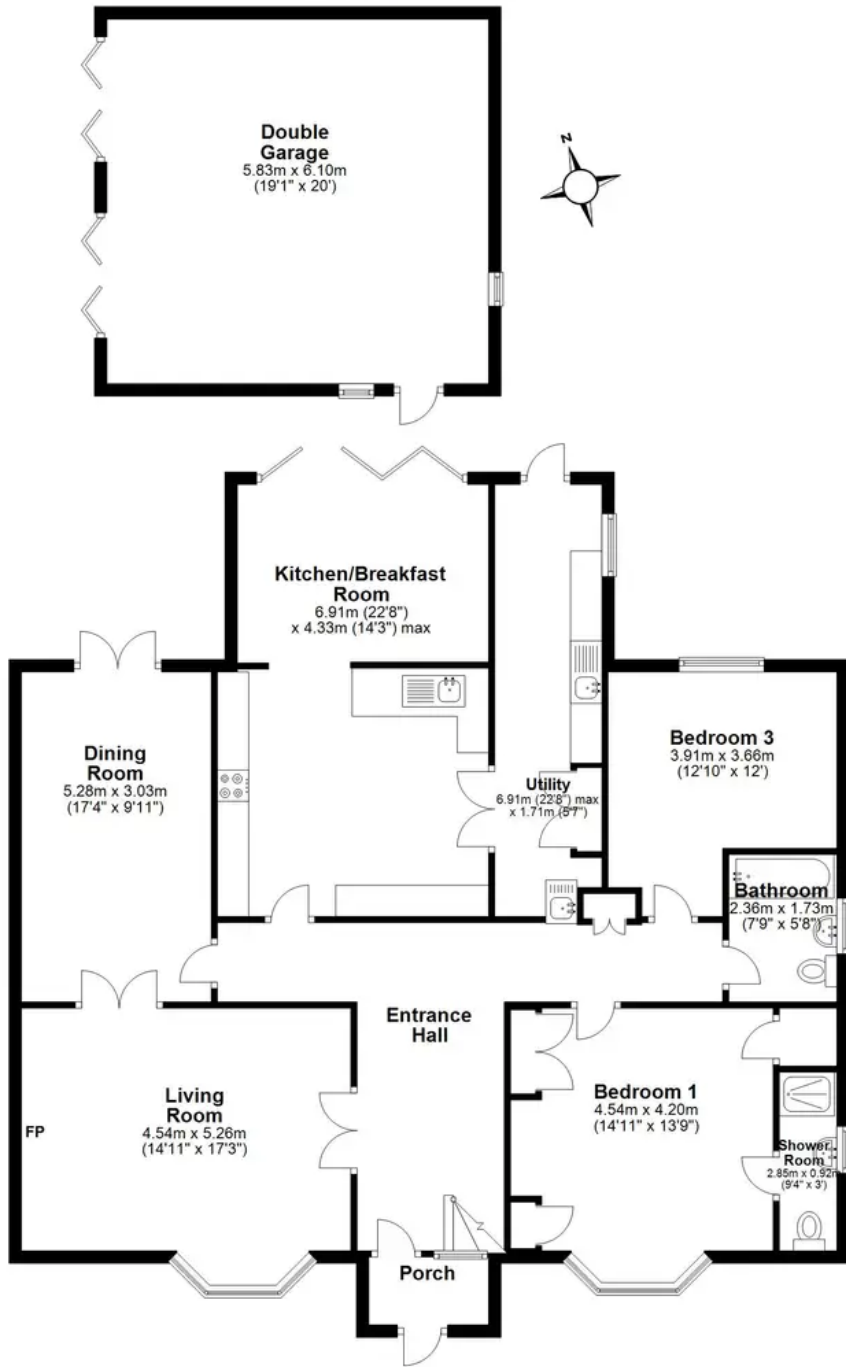
11' 3" x 6' 6" (3.43m x 1.98m)





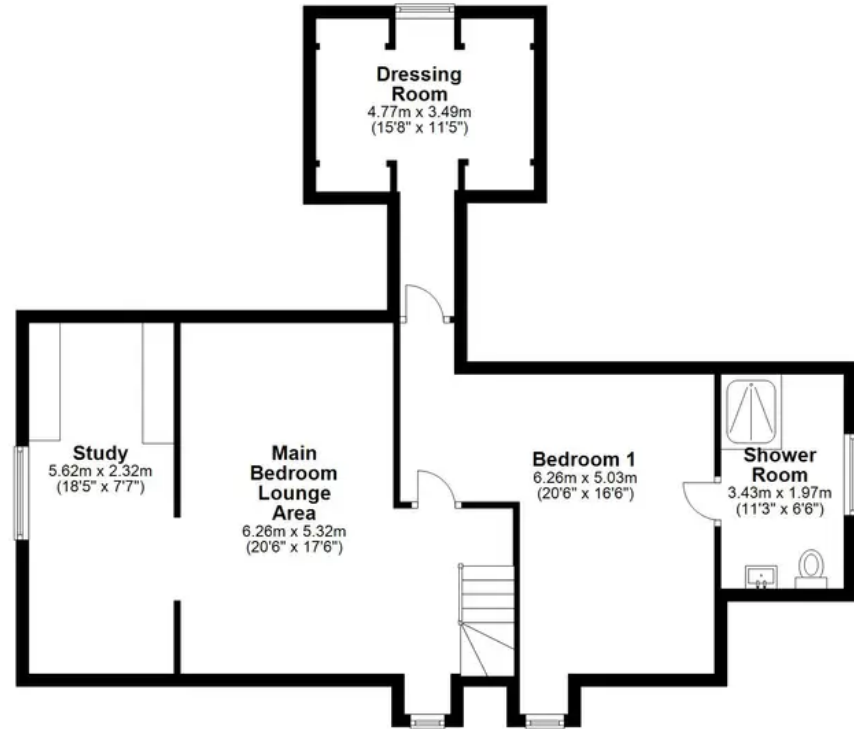
Ground Floor

Main area: approx. 146.4 sq. metres (1576.3 sq. feet)
Plus garages, approx. 35.6 sq. metres (382.7 sq. feet)



First Floor

Approx. 77.8 sq. metres (836.9 sq. feet)



Main area: Approx. 224.2 sq. metres (2413.2 sq. feet)

Plus garages, approx. 35.6 sq. metres (382.7 sq. feet)