



Fernie Lodge

Fernie Lodge - Freehold Guide Price: £ 1,800,000
Balfour Place | Cliff Road | Felixstowe | IP11 9RY | Plot 4



- Landmark links golf course UK residential development.
- Fantastic seaside location in Area of outstanding natural beauty.
- Eco friendly build - modern detached homes of pleasing design.



- Designed by an award winning Architect blending natural environment with overall biodiversity gain.
- Complimentary membership - Felixstowe Ferry golf club - one of the oldest clubs in England.

Felixstowe lies on the popular East coast of Suffolk. It is fast becoming the next sought after coastal location with it's easy access to the A12 and A14.

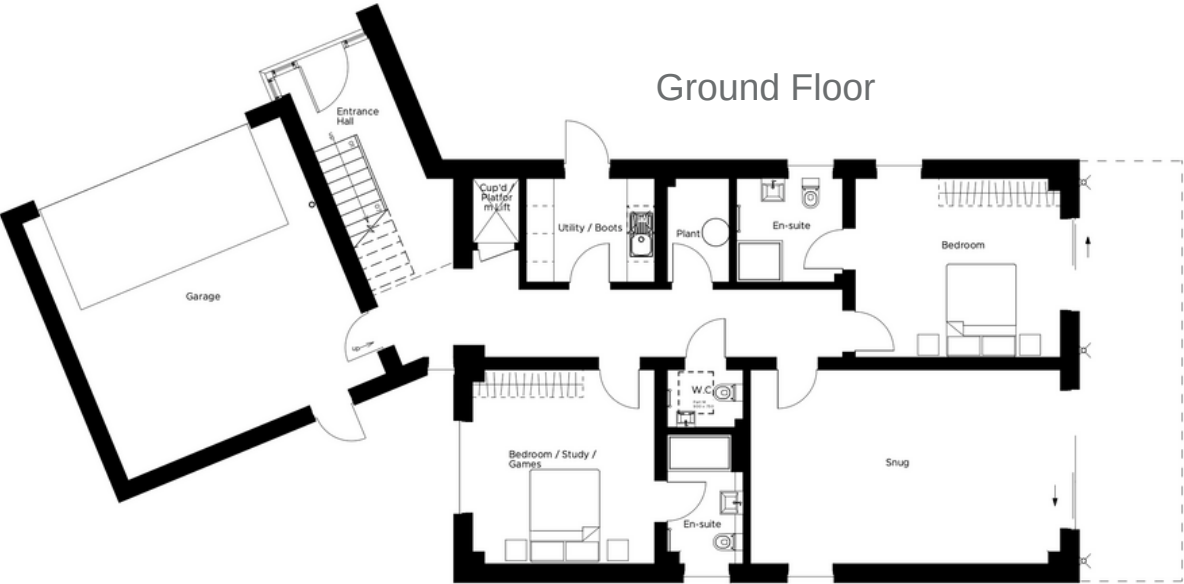
Balfour Place is a prestigious development of five unique architectural designed homes with an unrivalled specification and modern finishes mixed with contemporary design, situated on Cliff Road with sea views over an historic golf course, set in an Area of Outstanding Natural Beauty and all just 1 ½ hours by train to London Liverpool Street via Ipswich.

Fine & Country are presenting an opportunity to work with the award winning Architect Wincer Kievenaar to complete the interior design of your new home on the Felixstowe Ferry Golf Club. Founded in 1880, it is one of the oldest Golf Clubs in England. With views across the Deben Estuary, each of the houses is exclusively named after an important figure in the golf club's history. These stunning properties are further enhanced with generous ceiling heights, sea views extending out to protected balconies and crow's nest second floors will leave you breathless. The detailing is robust for its context and sustainability integral to the home's concept in their orientation, thermal mass and construction technology.

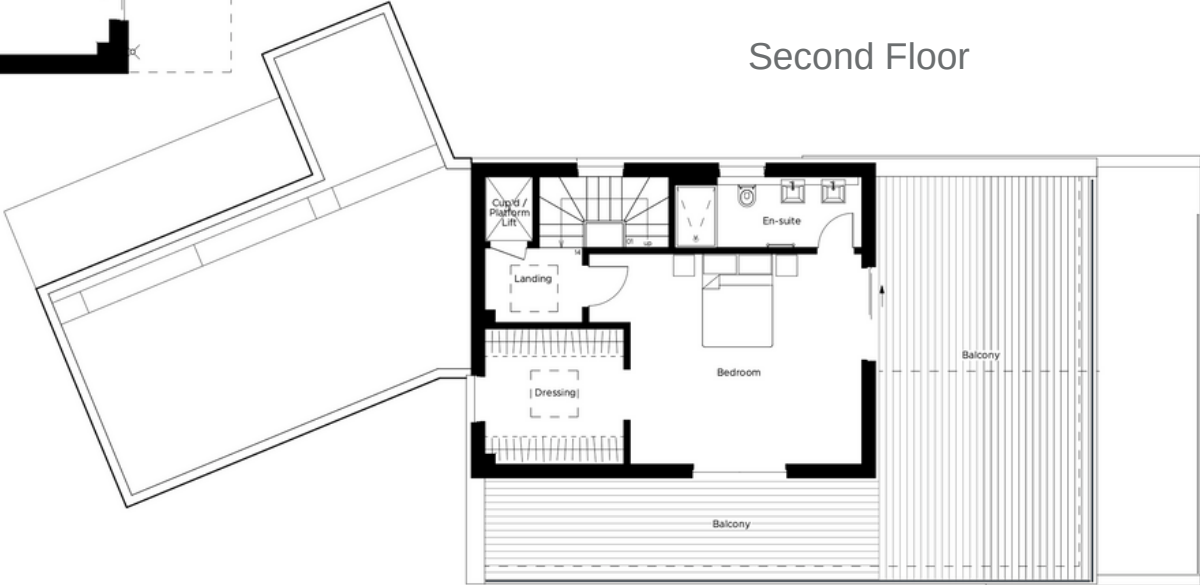
Members facilities include the 18 hole Martello course, the 9 hole full length Kingsfleet course, indoor and outdoor practice facilities, Clubhouse and changing facilities and buyers of these prestigious homes, will have two full memberships of the Club for two years. Plus two years complimentary membership for two Juniors (under 14) of the 9-hole Kingsfleet course.

The houses will be surrounded by natural shrub planting along the edges of the golf course and utilise a mixture of plants against the roadside frontages.

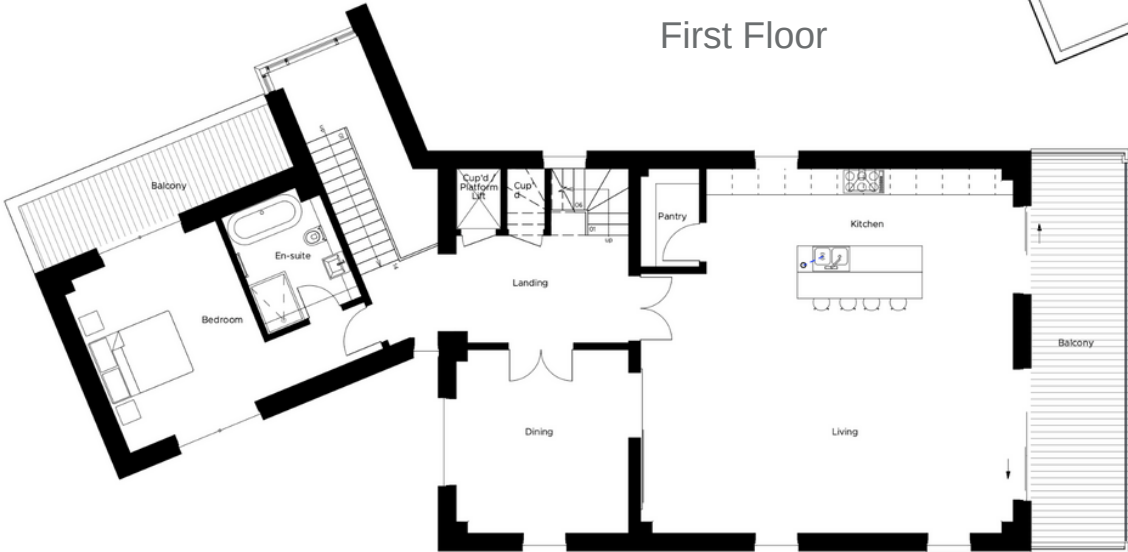
Ground Floor



Second Floor



First Floor



TOTAL - 3,880 sqft approx.

GROUND FLOOR

1,772 sqft

FEATURES

Double height entrance hall / Double integral garage with electric roller shutter door
Utility room / Separate WC / Snug / Two double bedrooms both with en-suite facilities
Infrastructure included for future platform lift / Access to rear patio and garden

FIRST FLOOR

1,400 sqft

FEATURES

Open plan kitchen/diner/lounge with access to terrace and magnificent views
Fully fitted modern kitchen with large island unit / Separate pantry
Separate WC / Double bedroom with en-suite facilities / Under floor heating throughout.

SECOND FLOOR

708 sqft

FEATURES

Double bedroom with en-suite facilities and separate dressing room
Access to terrace with spectacular views.



FERNIE LODGE

4 bedrooms | 3,880 sqft

Willie Fernie was the first Professional of the Club between 1883 – 1887.

Willie was the British Open Champion in 1884 and went on to be the longest serving Professional at Royal Troon

- Stunning first floor balcony with unrivalled coastal views towards Bawdsey.
- Modern 4 bedroom detached home with double garage.
- Penthouse second floor master suite with dual aspect balcony.



An individual Architect designed three storey house, extending to 3,880 square feet with enviable coastal views across the Ferry Golf Course to Bawdsey Manor, with unrivalled views across the Kingsfleet course and the Deben Estuary from the front elevation. The superb accommodation offers a high degree of flexibility including 4 double bedrooms, all with en-suites, a snug, an impressive open plan lounge/kitchen with pantry and utility room, dining room and double garage. The stunning first floor balcony extends across the full width of the house with direct access from the lounge and the top floor features a double bedroom, en-suite, dressing room and balcony on two sides providing elevated views. High specification double glazed doors and windows are powder coated aluminium and low maintenance exterior finish have been chosen for the construction.

BALFOUR PLACE SITE MAP



Suffolk County Properties Ltd trading as Fine & Country Woodbridge
Registered in England and Wales. Company reg. No. 05861438
Registered address: Crane Court, 302 London Road, Ipswich, Suffolk, IP2 0JA
Copyright 2022 Fine & Country Ltd

WHERE TO FIND US

Balfour Place is situated on Cliff Road in Felixstowe adjacent to Felixstowe Ferry Golf Club.

Directions: From Ipswich take the A14 towards Felixstowe. At the Dock Spur roundabout go straight across. Go straight across the second roundabout and at the third roundabout turn right into Beatrice Avenue. Turn left at the Orwell Hotel roundabout and follow the road along which leads into Cliff Road. Follow that road until you see the Golf Club and the development on the right.



Viewing strictly by prior appointment through the vendors
sole agent -

Fine & Country Woodbridge office - 01394 446007



Agents notes: All measurements are approximate and for general guidance only and whilst every attempt has been made to ensure accuracy, they must not be relied on. The fixtures, fittings and appliances referred to have not been tested and therefore no guarantee can be given that they are in working order. Internal photographs are reproduced for general information and it must not be inferred that any item shown is included with the property. For a free valuation, contact the numbers listed on the brochure.

