



HINTON
residential

SALES, LETTINGS & MANAGEMENT

Radcliffe Road

Harrow HA3 7QA

- Three bedroom house
- Driveway
- Potential to extend (STPP)
- Large rear garden

Asking Price Of **£525,000**

EPC Rating '58'



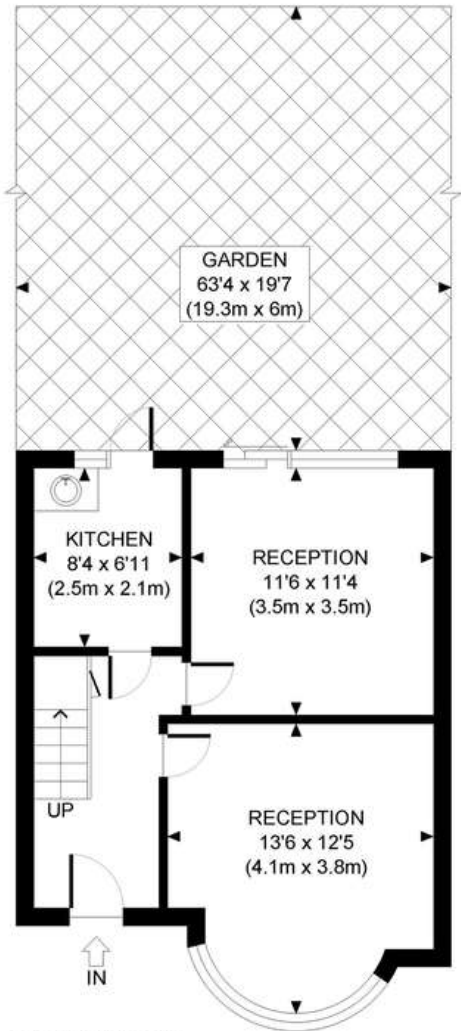


Property Description

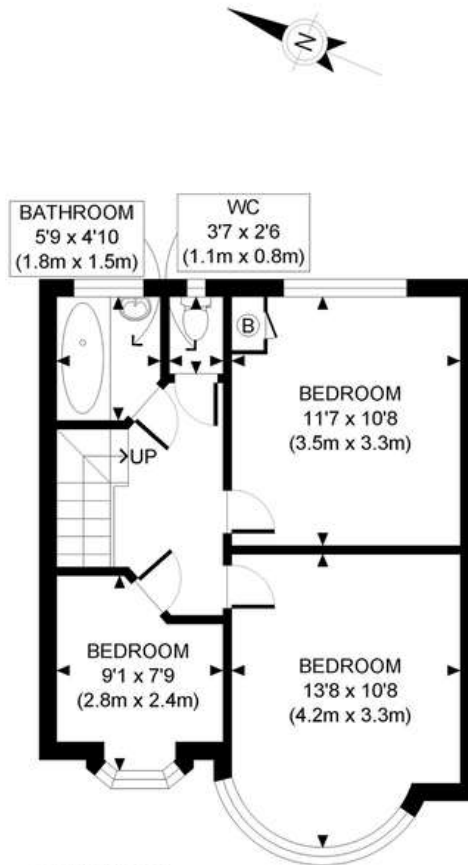
A THREE BEDROOM MID TERRACE house with off street parking located on a sought after residential road well positioned for shopping and transport facilities including that of Harrow/Wealdstone BR/Bakerloo Line station. Local schools are within easy reach including St.Josephs at Belmont Circle. The property offers great potential and comprises; two good sized reception rooms, a separate galley style kitchen with direct access out to the large rear garden. Upstairs there are two large double bedrooms, a third good sized single and a family bathroom with bath. The property offers potential for extension (STPP) and benefits from gas central heating. No onward chain, internal inspection highly advised.



Score	Energy rating	Current	Potential
92+	A		
81-91	B		
69-80	C		80 C
55-68	D	58 D	
39-54	E		
21-38	F		
1-20	G		



GROUND FLOOR
GROSS INTERNAL
FLOOR AREA 421 SQ FT



FIRST FLOOR
GROSS INTERNAL
FLOOR AREA 434 SQ FT

APPROX. GROSS INTERNAL FLOOR AREA: 855 SQ FT/ 79 SQM

PROPERTY PHOTO PLANS .CO.UK

ONE STOP SHOP FOR PROPERTY MARKETING

This plan is for illustrative purposes only and should be used as such by any prospective client. Whilst every attempt has been made to ensure the accuracy of the Floor Plan contained here, measurements of the doors, windows, rooms and any other items are approximate and no responsibility is taken for any errors, omissions, or misstatement. The services, systems and appliances shown have not been tested and no guarantee as to the operability or efficiency can be given.

399 High Road
Harrow
Middlesex
HA3 6EL

www.hintonresidential.com
sales@hintonanddownes.com
0208 861 1066

Agents Note: Whilst every care has been taken to prepare these sales particulars, they are for guidance purposes only. All measurements are approximate are for general guidance purposes only and whilst every care has been taken to ensure their accuracy, they should not be relied upon and potential buyers are advised to recheck the measurements