



17 Rossett Green Lane, Harrogate

Harrogate

Guide Price **£1,350,000**



MYRINGS

Harrogate's Family Estate Agent



17 Rossett Green Lane

Harrogate, Harrogate

A stunning 4 bedroom detached family home presented to an exceptional standard and specification with double garage, private parking and landscaped south facing gardens looking towards the Crimple Valley, forming part of an exclusive development of just four outstanding properties on the popular south side of Harrogate.

Council Tax band: H

Tenure: Freehold

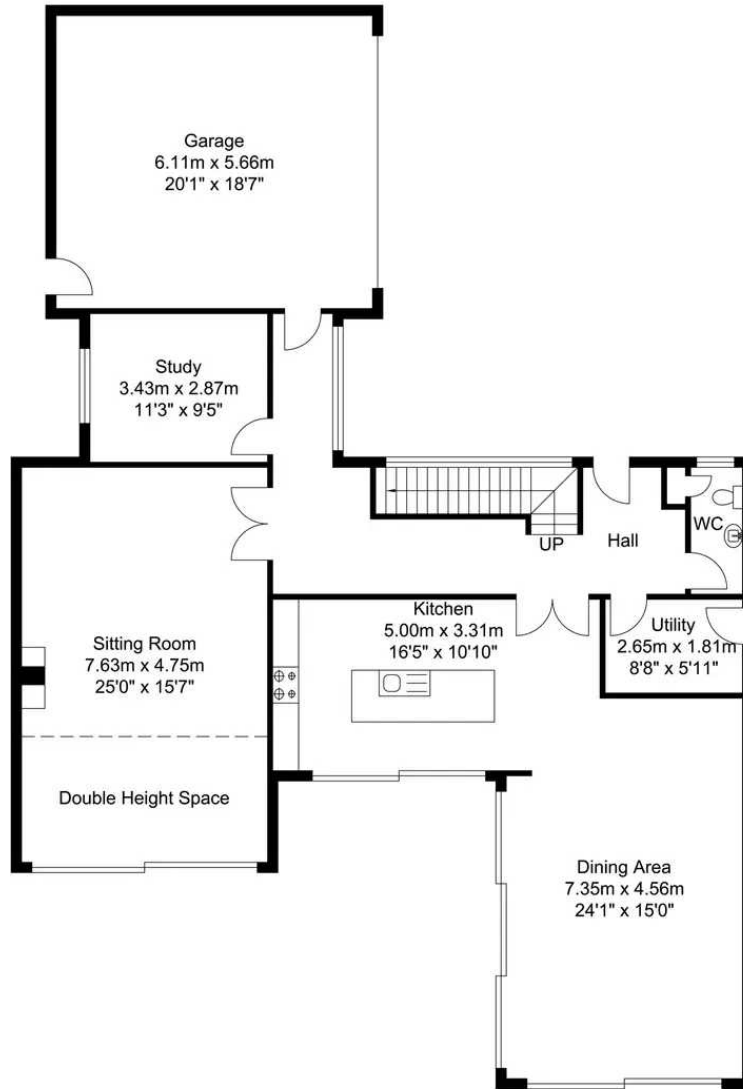
- AMAZING INTERIORS
- STUNNING SOUTH FACING VIEWS
- DOUBLE GARAGE
- CONTEMPORARY DESIGN
- SAT BEHIND ELECTRIC GATES
- SOUTH SIDE ADDRESS



MYRINGS

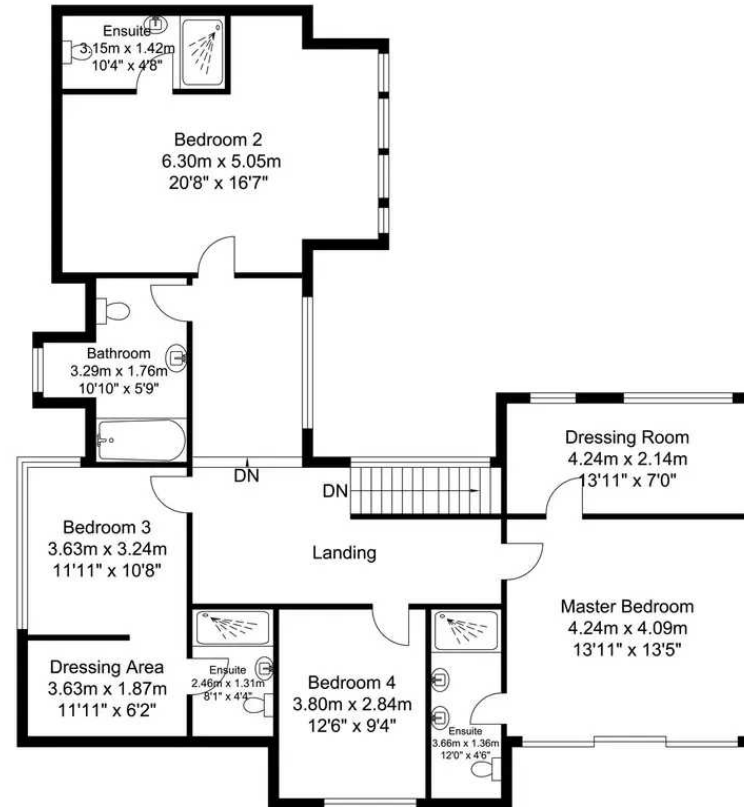


Greenway



GROUND FLOOR

Approximate Floor Area 166.09 sq. m (1787.77 sq. ft.)



FIRST FLOOR

Approximate Floor Area 127.87 sq. m (1376.38 sq. ft.)

Approximate Floor Area 293.96 sq. m (3164.15 sq. ft.)





Myrings Estate Agents

Myrings Estate Agents Ltd, 10 Princes Square - HG1 1LX

01423
566400

• enquiries@myringsestateagents.com • <http://myringsestateagents.com/>

