



106 Stride Avenue, Baffins

Portsmouth

Offers in Region of £290,000

 chinneckshaw







# 106 Stride Avenue

## Baffins, Portsmouth

Located in the heart of Baffins! If you are looking for a characterful property with lots of potential then this one has to be at the top of your viewing list! With good size rooms, three bedrooms a south facing garden and a double garage, this property is perfect for those of you wanting to make this house your home.

The property boasts a forecourt at the front, offering a welcoming entrance to the home. Inside, you'll find a bright and airy living room to the front of the property, complete with a large bay window. The dining room is equally spacious and perfect for entertaining, while the kitchen offers plenty of potential for modernisation and has access to a good size conservatory which has access to the garden.

Upstairs, you'll find three bedrooms, all a good size and ready for you to decorate to your own taste. The bathroom is located at the front of the property and while perfectly serviceable we think would benefit from a new suite to help you make this house your home.

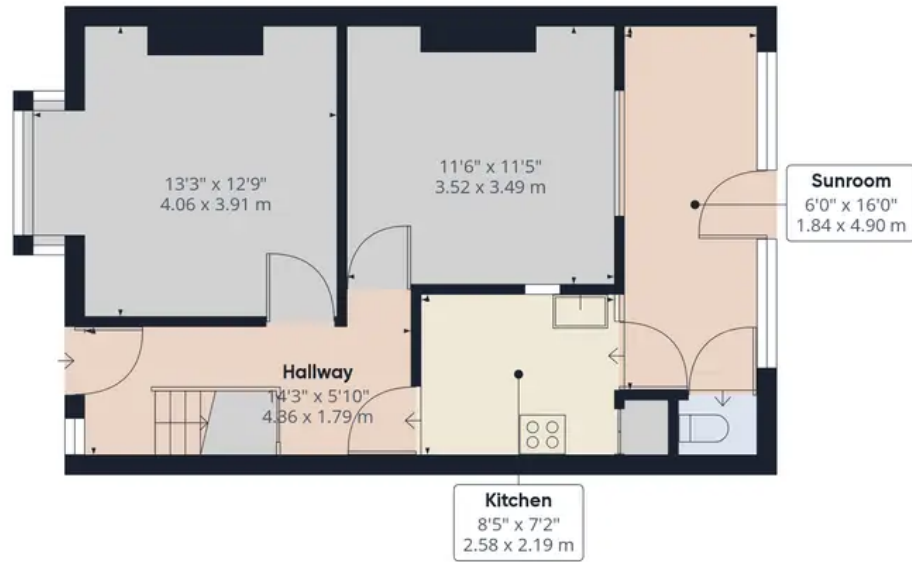
Outside, the garden is south facing and mainly paved to patio with access to a double garage and also pedestrian access via a gate to the rear.

All in all this property offers plenty of scope for those of you looking to create their dream home. With no forward chain and in a fantastic location, this property is not to be missed.

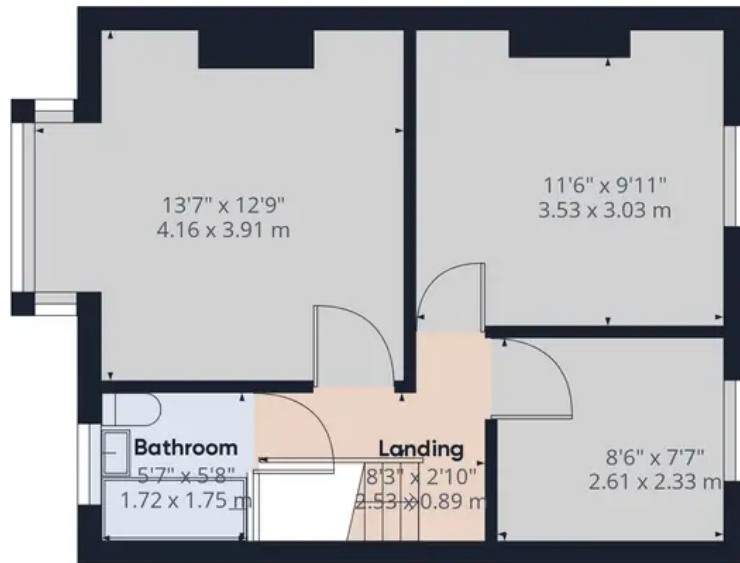
Council Tax band: C

Tenure: Freehold

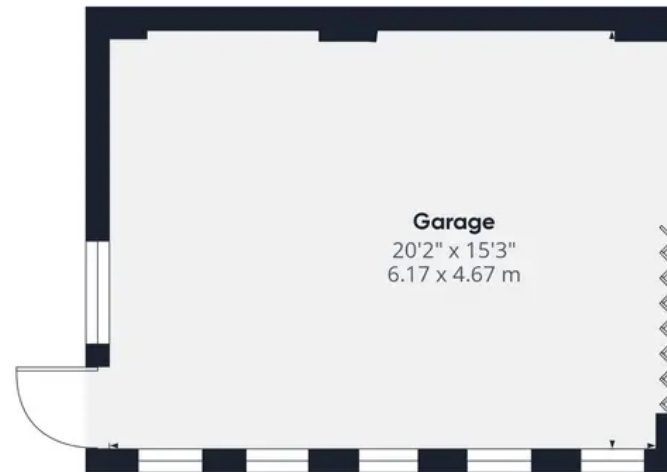




Ground Floor Building 1



Floor 1 Building 1



Ground Floor Building 2

Approximate total area<sup>1)</sup>

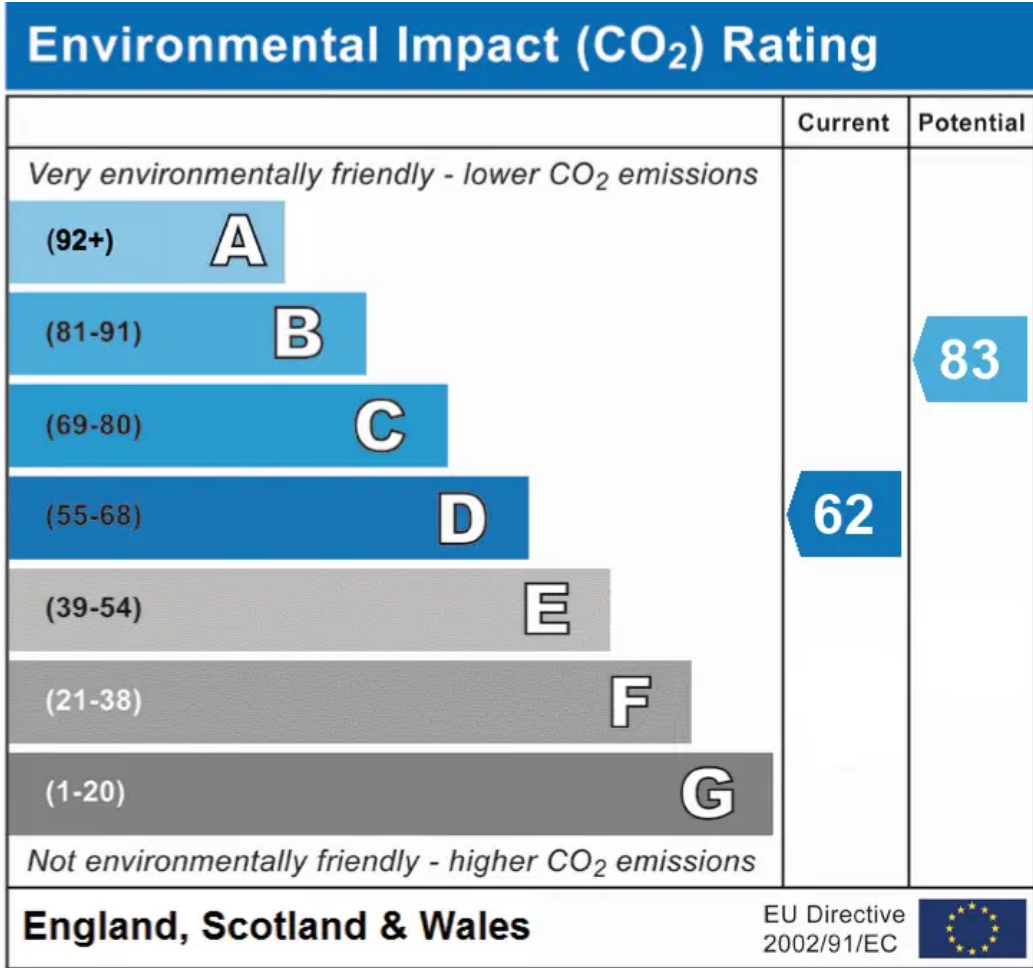
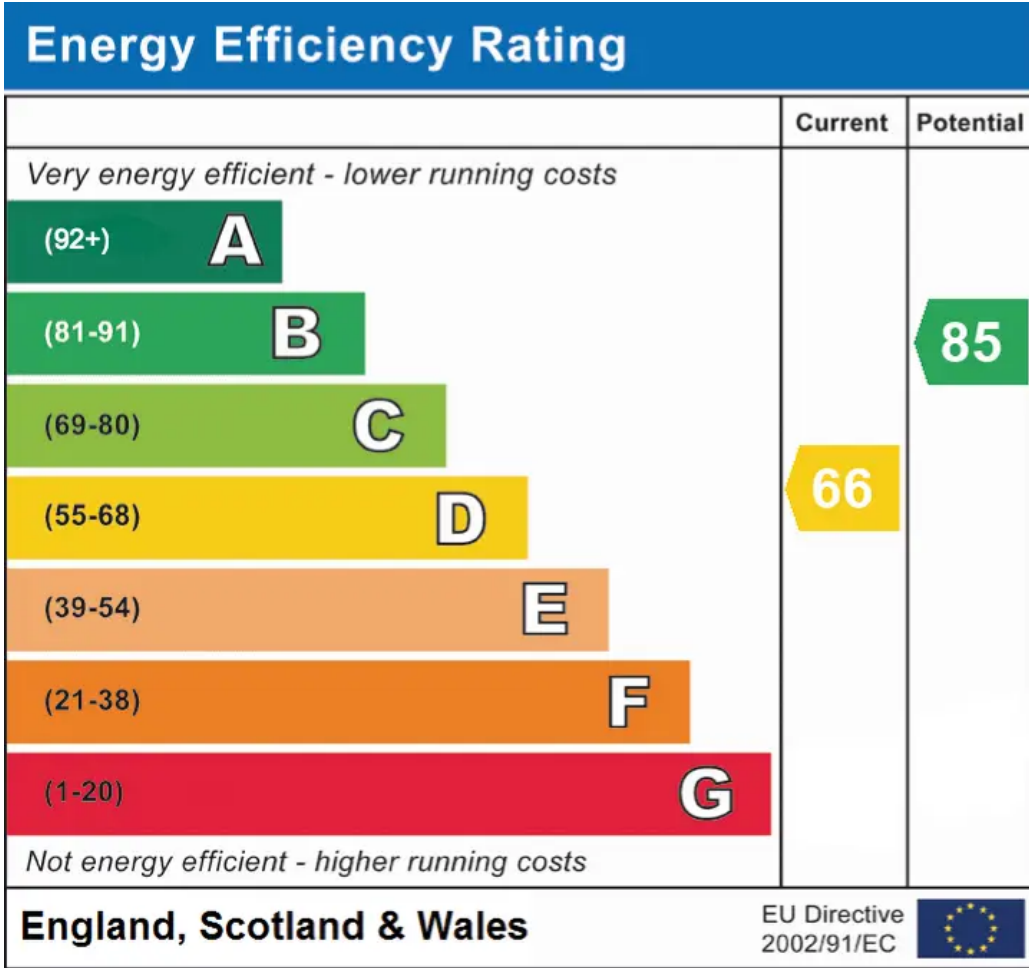
1288.08 ft<sup>2</sup>  
119.67 m<sup>2</sup>

Excluding balconies and terraces

While every attempt has been made to ensure accuracy, all measurements are approximate, not to scale. This floor plan is for illustrative purposes only.

GIRAFFE360





## Chinneck Shaw

Bridge House, Milton Road, Portsmouth – PO3 6AN

023 9282 6731

hello@chinneckshaw.co.uk

www.chinneckshaw.co.uk/

Chinneck Shaw, Bridge House, Milton Road, PO3 6AN Consumer Protection from Unfair Trading Regulations 2008: These details are for guidance only and complete accuracy cannot be guaranteed. If there is any point which is of particular importance, verification should be obtained. The do not constitute a contract or part of a contract. All measurements are approximate. No guarantee can be given with regard to planning permissions or fitness for purpose. No apparatus, equipment, fixture or fitting has been tested. Items shown in the photographs are NOT necessarily included. Interested Parties are advised to check availability and make an appointment to view before travelling to see a property.