



16 Windsor Court, York Close

Guide Price £325,000

16 Windsor Court

York Close, Horsham

The accommodation comprises of an entrance hallway with stairs rising to the first floor. The generous sitting / dining room is filled with plenty of natural light with dual aspect windows. The contemporary kitchen features a range of white wall and base units with contrasting work surfaces. The kitchen includes integrated appliances of fridge, freezer, induction hob, extractor fan and oven. Also of note to the first floor is a modern cloakroom. To the second floor is three good sized bedrooms, all with cupboard space. The main bathroom features a bath with overhead shower, low level WC and wash hand basin with storage.

Council Tax band: C

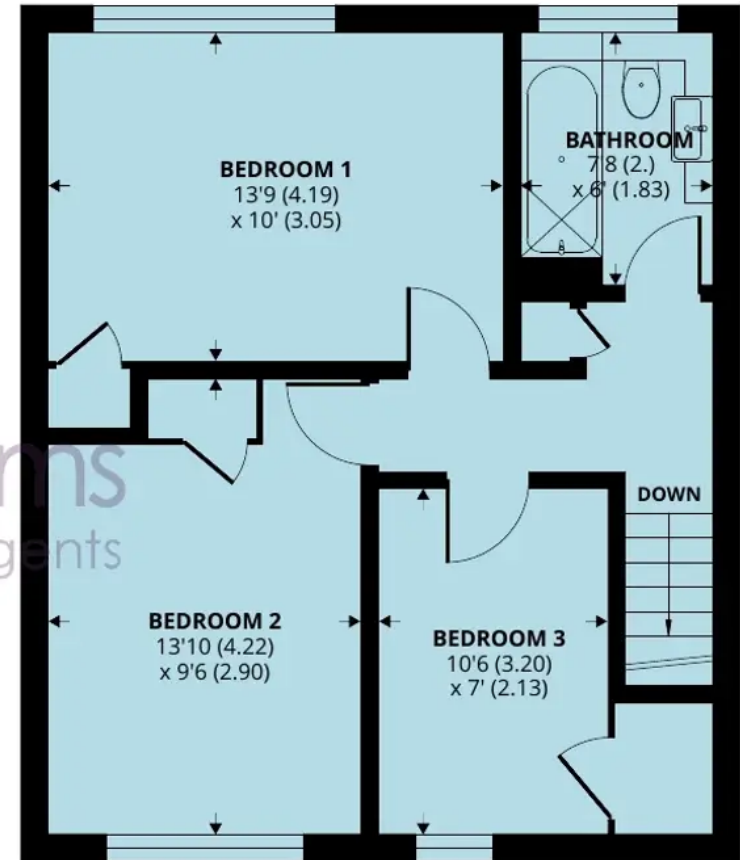
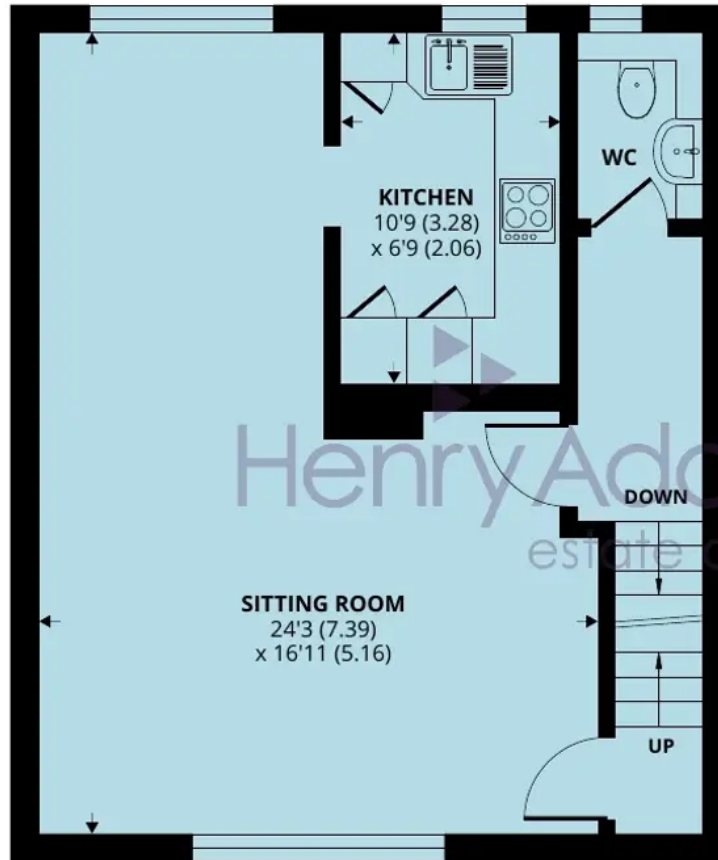
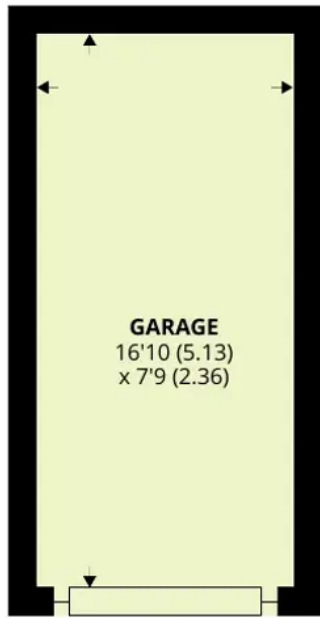
Tenure: Leasehold

EPC Energy Efficiency Rating: C

EPC Environmental Impact Rating:

- Three bedroom maisonette
- Spacious sitting room
- Contemporary kitchen
- Fitted cupboard space
- Well-equipped bathroom
- Communal gardens
- Garage en-bloc and residential parking
- Access to amenities
- Access to mainline train station
- Good commuter routes





GROUND FLOOR

FIRST FLOOR

SECOND FLOOR

16 Windsor Court, York Close, Horsham, RH13 5PH

Approximate Area = 1154 sq ft / 107.2 sq m (includes garage)

For identification only - Not to scale



Floor plan produced in accordance with RICS Property Measurement Standards incorporating International Property Measurement Standards (IPMS2 Residential). © nchecon 2024. Produced for Henry Adams. REF: 1075238



Henry Adams - Horsham

Henry Adams HRR Ltd, 50 Carfax, Horsham - RH12 1BP

01403 253271

horsham@henryadams.co.uk

www.henryadams.co.uk/

Agents Note - Our particulars are for guidance only and are intended to give a fair overall summary of the property. They do not form part of any contract or offer, and should not be relied upon as a statement or representation of fact. Measurements, areas and distances are approximate only. Photographs may include lifestyle shots and pictures of local views. No undertaking is given as to the structural condition of the property, or any necessary consents or the operating ability or efficiency of any service, system or appliance. Please ask if you would like further information, especially before you travel to the property.