

# 14 Mosaic Lane

Harlow, Harlow

Council Tax band: C

Tenure: Freehold

- DETACHED COACH HOUSE
- GARDEN
- MODERN INTERGRATED KITCHEN
- TWO DOUBLE BEDROOMS
- JUILETTE BALCONY
- TWO UNDERCOVER PARKING SPACES
- BUILT 2018
- NHBC CERTIFICATE



**Entrance Hall**

**Kitchen/ Living/ Dining Room**

17' 11" x 17' 5" (5.46m x 5.32m)

**Bedroom One**

11' 4" x 10' 10" (3.46m x 3.31m)

**Bedroom Two**

12' 2" x 10' 10" (3.71m x 3.31m)

**Bathroom**

6' 11" x 6' 11" (2.12m x 2.12m)

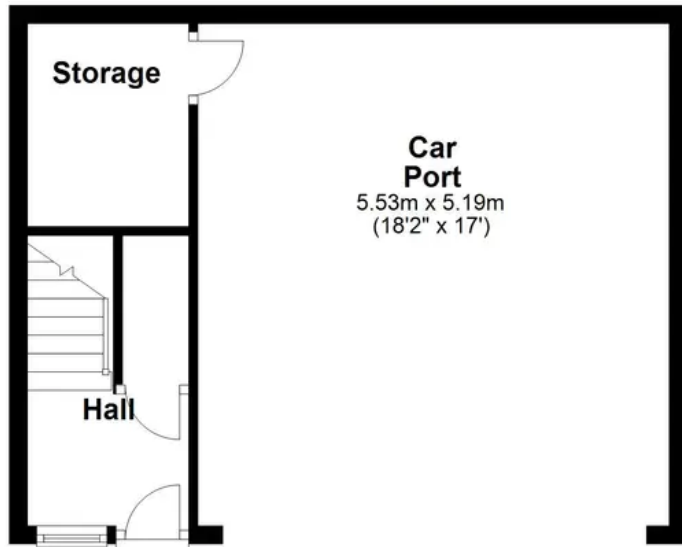






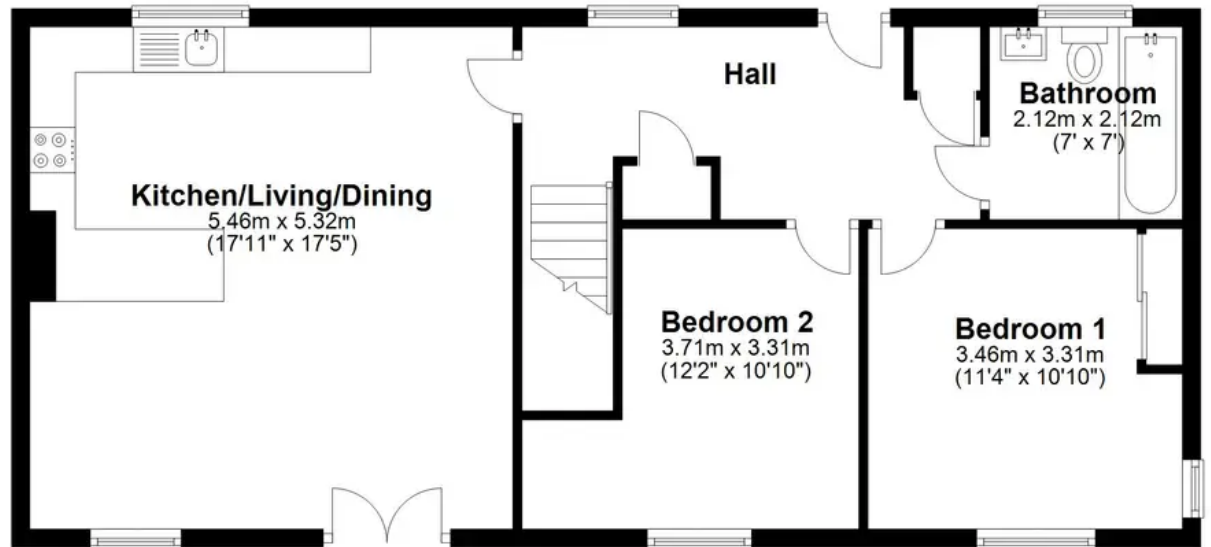
### Lowest Ground Floor

Main area: approx. 9.8 sq. metres (105.6 sq. feet)  
Plus car port, approx. 28.7 sq. metres (308.7 sq. feet)



### Ground Floor

Approx. 69.8 sq. metres (750.9 sq. feet)



Main area: Approx. 79.6 sq. metres (856.5 sq. feet)

Plus car port, approx. 28.7 sq. metres (308.7 sq. feet)