



Oakwood homes[®]
putting people first

Property brochure



THE WARREN DRIVE
WESTGATE
KENT
CT8 8JB

Guide Price: £380,000 - £400,000

4 Bedrooms

2 Receptions

1 Bathroom

1 Garage

EPC D

Tenure FREEHOLD
Council Tax C



birchington@oakwoodhomes.biz



01843 842233



www.oakwoodhomes.biz

Sales | Lettings | Property Management | Land Acquisition | Development Consultancy | New Homes | Mortgages | Conveyancing

Oakwood homes is a trading name of Oakwood homes Estate Agents Ltd whose registered office is at Stockwell House, Cecil Square, Margate, Kent CT9 1BD



The Property

Guide Price £380,000 - £400,000. A chain free four bedroom semi-detached house, set on a generous corner plot, offering versatile accommodation and the opportunity for a modernisation project. This well loved home is the ideal investment for a family looking for more space, and the opportunity to get creative. Accommodation comprises kitchen, dining room and lounge, both of which over look the rear garden, plus downstairs W.C. The first floor offers three double bedrooms and a fourth single which is still a reasonable size. A family bathroom completes the first floor. Outside offers a lovely wrap around garden with summer house, ideal for families to enjoy, and a great space for summer socialising or simply relaxing. A detached garage with drive is situated behind secure gates. Local primary and secondary schools are close by, plus local shops for convenience. See for yourself what this home has to offer and call Oakwood homes today to book your viewing!

Location

Westgate on Sea remains today a stylish and elegant seaside town. It boasts two blue flag beaches, St Mildreds Bay and Westgate Bay a range of beach facilities and of course those stunning Turner sunsets. At the heart of Westgate lies a small parade of independent shops some of which still possess the original Victorian canopied walkway. The Mainline station provides access to London, approximately 1.5 hours travel time and the remaining Thanet towns including fashionable Margate which is less than 2 miles walk along the seafront. Westwood Cross provides further shopping and leisure opportunities whilst approximately 14 miles distant lays the historic cathedral city of Canterbury.

Accommodation

GROUND FLOOR

Porch	
Entrance hall	
Kitchen	15'6" (4.72m) x 12' (3.66m)
Dining Room	20' (6.10m) x 8'5" (2.57m)
Lounge	23'6" (7.16m) x 10'4" (3.15m)
Downstairs W.C	

FIRST FLOOR

Bedroom 1	19'10" (6.05m) x 8'8" (2.64m)
Bedroom 2	11'8" (3.56m) x 10'4" (3.15m)
Bedroom 3	11'4" (3.45m) x 10'4" (3.15m) into fitted wardrobe
Bedroom 4	11' (3.35m) x 6' (1.83m)
Family Bathroom	7'10" (2.39m) x 5'5" (1.65m)

OUTSIDE

Great sized rear garden, which wraps around the property. Summer house and garage with driveway.



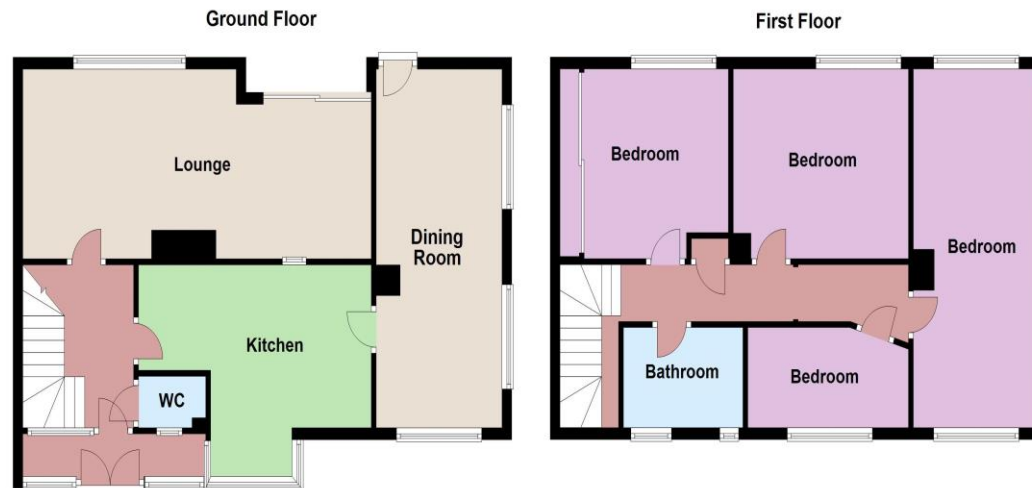


Oakwood homes[®]
putting people first

Property brochure

Key Features

- Guide Price £380,000 - £400,000
- Chain free!
- Over 1290 Square Foot + Large Plot
- 4 bedroom family home
- Garage and driveway
- Pretty rear garden
- 2 reception rooms
- Downstairs W.C
- Local primary school nearby



© Copyright Oakwood homes - Not to be reproduced or copied without permission. All rights reserved.
Plan produced using PlanUp.

Need a mortgage..?

For impartial advice, why not talk to one of our qualified mortgage advisors?

0800 035 0353



Agent's Note: None of the appliances or services have been tested and prospective purchasers should satisfy themselves as to their condition. BIR0022744/2023|128/AWDP



birchington@oakwoodhomes.biz



01843 842233



www.oakwoodhomes.biz



Sales | Lettings | Property Management | Land Acquisition | Development Consultancy | New Homes | Mortgages | Conveyancing
Oakwood homes is a trading name of Oakwood homes Estate Agents Ltd whose registered office is at Stockwell House, Cecil Square, Margate, Kent CT9 1BD