



2 Bedroom End Terraced House

Portwell, Cricklade, Swindon, SN6 6SA

Offers In Excess Of £240,000

mcfarlane
property.com

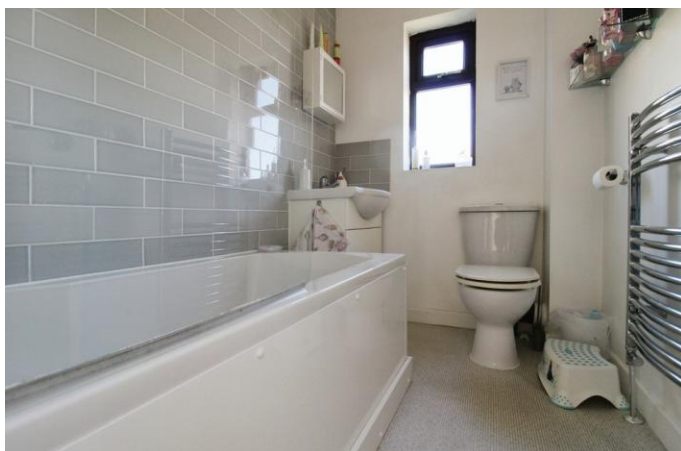
2 Bedroom End Terraced House Cricklade

-
- IDEAL INVESTMENT OR FIRST PURCHASE
 - SUPERB TWO BEDROOM END PROPERTY
 - SOUGHT AFTER CRICKLADE POSITION
-

- IDEAL FIRST PURCHASE OR INVESTMENT -
DELIGHTFUL TWO BEDROOM HOUSE - SOUGHT
AFTER CRICKLADE POSITION - MODERNISED
ACCOMMODATION - VIEWING RECOMMENDED -

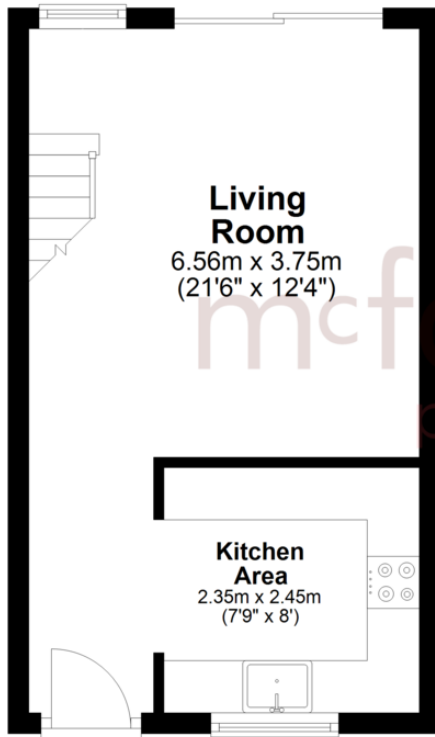
A lovely two bedroom end house which occupies a sought after position in Cricklade within walking distance of all local amenities. The property boasts modernised accommodation which offers Entrance, Lounge, Fitted Kitchen/Dining Room, landing, Two Bedrooms & Bathroom. Additional benefits include gas central heating and double glazing. Outside there is an enclosed garden and parking space for one vehicle. Viewing Recommended.





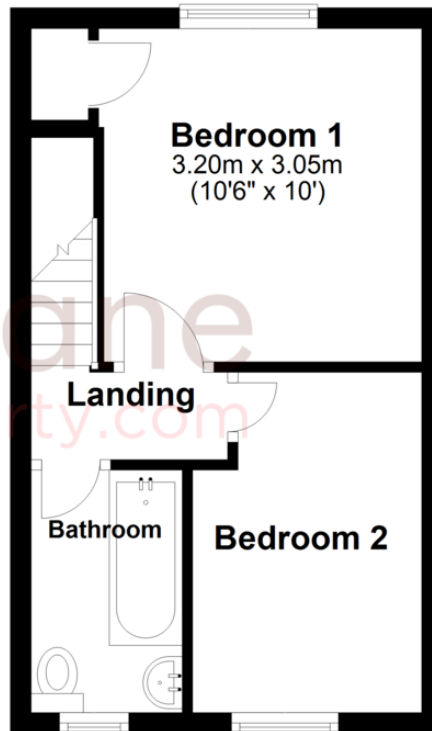
Ground Floor

Approx. 24.6 sq. metres (264.5 sq. feet)



First Floor

Approx. 24.6 sq. metres (264.5 sq. feet)



Total area: approx. 49.1 sq. metres (529.0 sq. feet)


We 
where you
LIVE

Our team are friendly, experienced and are all local. They know it better than they do their own living rooms and can help you find what you're looking for because **we love where we live.**

We would be delighted to show you around this property.

**Because every home
needs a personal touch.**

**If you would like to view this
property then please get in touch.**

 01793 751044

 cricklade@mcfarlaneproperty.com

mcfarlaneproperty.com

mcfarlane
property.com

Cricklade.

102 High Street
Cricklade SN6 6AA

 01793 751044

Marlborough.

106 High Street
Marlborough SN8 1LT

 01672 514380

Old Town.

28-30 Wood Street
Swindon SN1 4AB

 01793 296880

Swindon.

The Village Centre,
Redhouse SN25 2FW

 01793 296600

Agents Note: Whilst every care has been taken to prepare these sales particulars, they are for guidance purposes only. All measurements are approximate are for general guidance purposes only and whilst every care has been taken to ensure their accuracy, they should not be relied upon and potential buyers are advised to recheck the measurements