


Walletts Road, Chorley

PR7 2HU

In Excess of **£155,000**







Delightful and spacious mid terrace property, in a quiet and popular residential area with easy access to town centre amenities, schools and primary transport routes. With private parking and just under 1,000 square feet on offer this is a lovely family home. The front garden is block paved and leads to the main entrance. Step into the vestibule and from there into the entrance hallway. To the front, the living room benefits from a bay and gas fire in hearth. To the rear, the heart of the house comprises dining area and kitchen with a range of wall and base units with electric hob, oven and grill and space, power and plumbing for additional appliances. Completing the ground floor, the bathroom has bath with screen and mixer shower over, wash hand basin, wc, ladder heated towel rail, tiled flooring and panelled walls. Externally, the south facing rear garden is also block paved and gated offering both a great place in which to sit and relax as well as secure parking. The detached garage benefits from power and light. Back inside, stairs lead to the first floor landing with bedroom one a beautiful large double which also benefits from the bay, and bedrooms two and three are easily able to accommodate double beds.





Delightful and spacious mid terrace property, in a quiet and popular residential area with easy access to town centre amenities, schools and primary transport routes. With private parking and just under 1,000 square feet on offer this is a lovely family home.

Council Tax band: A

Tenure: Leasehold

- Lovely mid terrace property
- Three double bedrooms
- Secure off road parking
- Detached garage
- Modern kitchen and bathroom
- Just under 1,000 square feet



**Eccleston Branch**

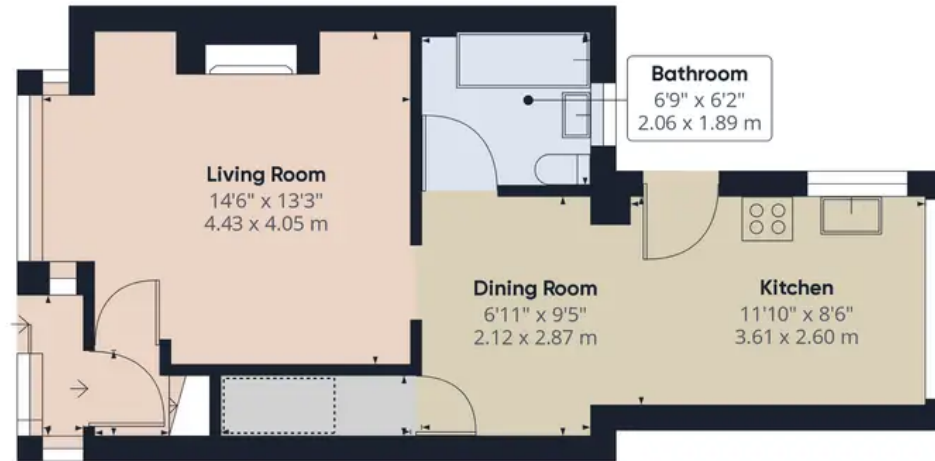
265 The Green, Eccleston, PR7 5TF  
01257 451673

**Coppull Branch**

244 Spendmore Lane, Coppull, PR7 5DE  
01257 794588

[www.hometruthslancs.co.uk](http://www.hometruthslancs.co.uk)  
[office@hometruthslancs.co.uk](mailto:office@hometruthslancs.co.uk)





Floor 1 Building 1



Floor 2 Building 1



Floor 1 Building 2

**Approximate total area<sup>0</sup>**

971.5 ft<sup>2</sup>

90.26 m<sup>2</sup>

**Reduced headroom**

12.1 ft<sup>2</sup>

1.12 m<sup>2</sup>

Excluding balconies and terraces

 Reduced headroom  
(below 1.5m/4.92ft)

While every attempt has been made to ensure accuracy, all measurements are approximate, not to scale. This floor plan is for illustrative purposes only.

GIRAFFE360