



13 St. Itha Close, Selsey

Guide Price £385,000

13 St. Itha Close

Selsey, Chichester

The property is a well presented detached bungalow offering a comfortable and convenient living space. Boasting two bedrooms, this home is perfect for a small family or those looking to downsize.

The living room features parquet wooden flooring and a charming log burner, creating a warm and inviting atmosphere with the modern kitchen with vaulted ceiling opens to a delightful conservatory.

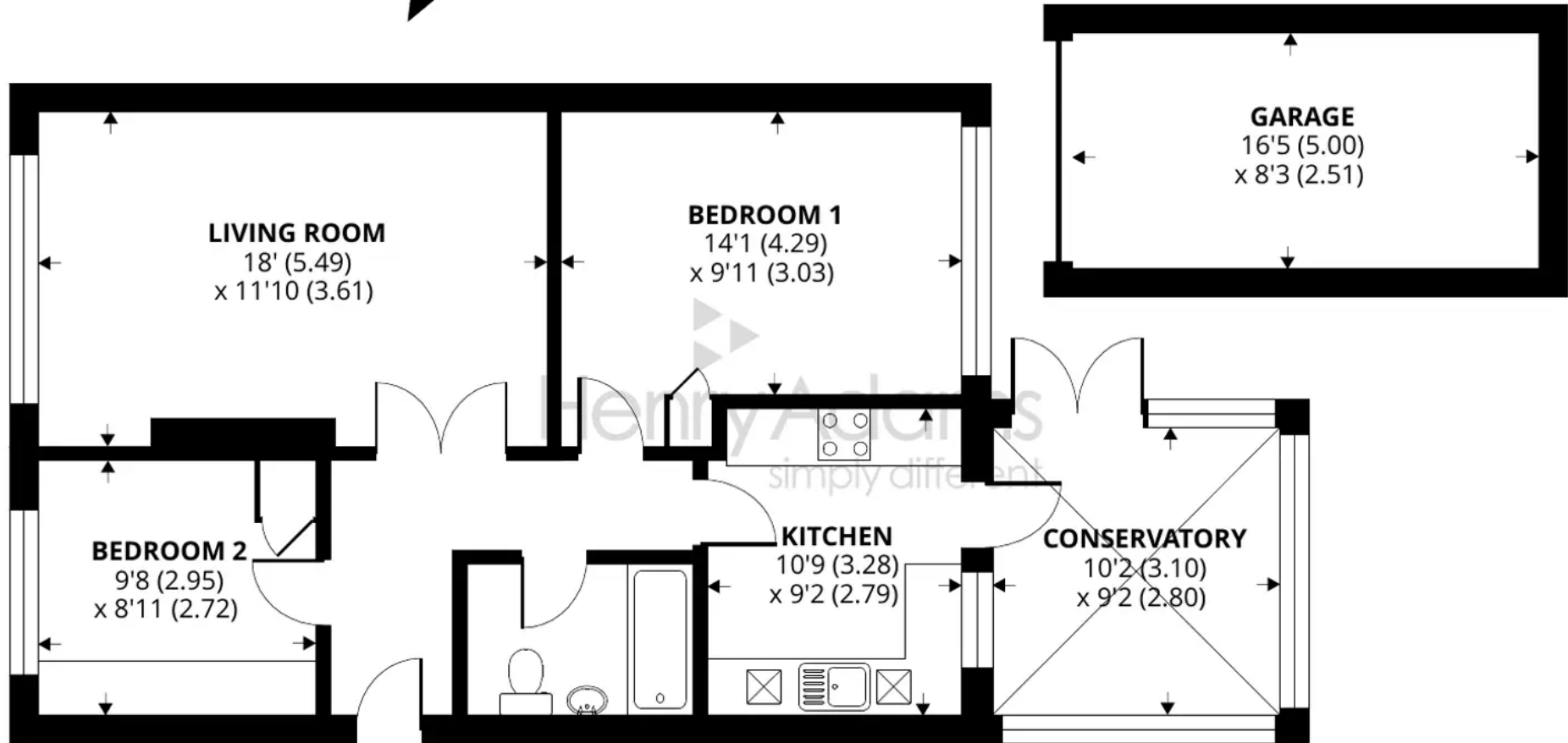
Situated in a quiet cul-de-sac, this property benefits from a peaceful location whilst still being within close proximity to local amenities, including shops and transport links. The home also offers off-street parking with a driveway and garage.

The garden provides a tranquil space, perfect for an outdoor morning coffee. Whether you're looking for a peaceful retreat or a place to entertain family and friends, this property's outside space offers possibilities.

Council Tax band: D EPC: D

- Detached bungalow
- Two bedrooms
- Living room with log burner
- Kitchen with access to a conservatory
- Cul-de-sac location in close proximity to the amenities
- Driveway & garage





GROUND FLOOR

13 St. Itha Close, Selsey, Chichester

Approximate Area = 942 sq ft / 87.5 sq m (includes garage)

For identification only - Not to scale



Floor plan produced in accordance with RICS Property Measurement Standards incorporating International Property Measurement Standards (IPMS2 Residential). © nichecom 2020. Produced for Henry Adams. REF: 635689





Henry Adams - Selsey

Henry Adams LLP, 122 High Street, Selsey - PO20 0QE

01243 606789 • selsey@henryadams.co.uk • www.henryadams.co.uk/

Agents Note - Our particulars are for guidance only and are intended to give a fair overall summary of the property. They do not form part of any contract or offer, and should not be relied upon as a statement or representation of fact. Measurements, areas and distances are approximate only. Photographs may include lifestyle shots and pictures of local views. No undertaking is given as to the structural condition of the property, or any necessary consents or the operating ability or efficiency of any