

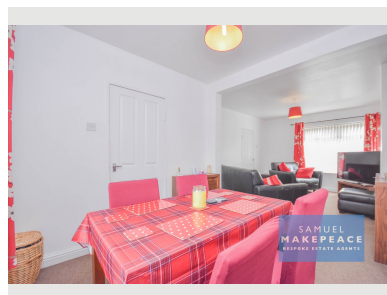
Hallfield Grove Tunstall



SAMUEL
MAKEPEACE
BESPOKE ESTATE AGENTS



- ✓ Two Bed Semi Detached Property
- ✓ Open Plan Living Room/diner
- ✓ Fully Fitted Kitchen
- ✓ Two Double Bedrooms
- ✓ Huge Main Bedroom
- ✓ Fully Tiled Bathroom
- ✓ Large Enclosed Rear Garden With Garden Bar
- ✓ Paved Front Driveway
- ✓ Close To Local Amenities
- ✓ No Upward Chain



Bedroom  2 Bathroom  1 Reception  1

Offers in Excess of **£115,000**