



3 Beetley Meadows, Beetley

In Excess of £625,000

3 Beetley Meadows

Beetley, Dereham

Discover the epitome of refined living in this exceptional four-bedroom property seamlessly blending comfort and sophistication. The ground floor welcomes you with a plush-carpeted living room featuring a charming wood burner, leading to an open-plan family and entertaining room. Ascending to the upper floor, a generously sized master bedroom with ensuite and three additional adaptable bedrooms await. The outdoor oasis boasts a sprawling 0.35-acre plot with meadow views and a perfect backdrop for recreational activities, complemented by an outbuilding, double garage and ample parking, creating a harmonious blend of elegance and practicality.

Council Tax band: E

Tenure: Freehold

EPC Energy Efficiency Rating: D

EPC Environmental Impact Rating: D





3 Beetley Meadows

Beetley, Dereham

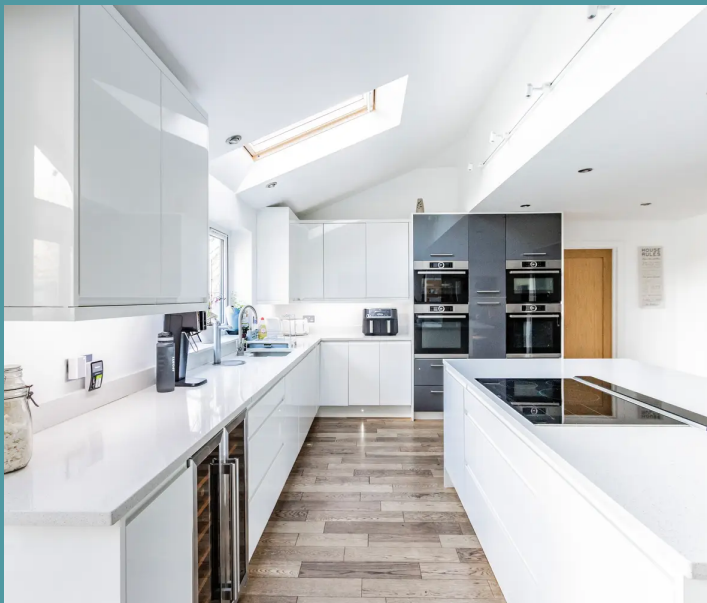
Discover the epitome of refined living in this exceptional four-bedroom property seamlessly blending comfort and sophistication. The ground floor welcomes you with a plush-carpeted living room featuring a charming wood burner, leading to an open-plan family and entertaining room. Ascending to the upper floor, a generously sized master bedroom with ensuite and three additional adaptable bedrooms await. The outdoor oasis boasts a sprawling 0.35-acre plot with meadow views and a perfect backdrop for recreational activities, complemented by an outbuilding, double garage and ample parking, creating a harmonious blend of elegance and practicality.

LOCATION

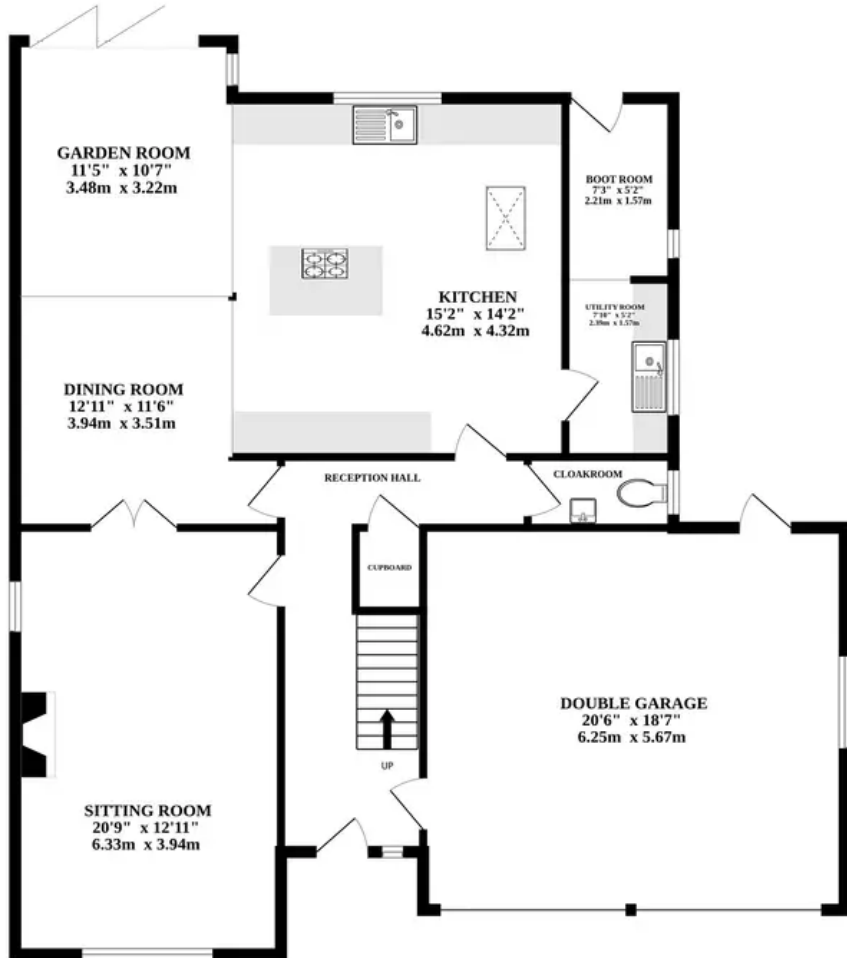
Nestled in the tranquility of Beetley, Beetley Meadows offers the quintessential charm of a quiet village lifestyle. This idyllic location boasts the warmth of community living, with local pubs providing inviting spaces for socialising. Families will appreciate the convenience of nearby primary schools, fostering a nurturing environment for education. Residents enjoy the ease of regular bus routes, connecting them to the heart of the village and beyond. With close proximity to neighbouring towns such as Dereham and Gressenhall, this residence ensures access to a myriad of amenities, enhancing the overall appeal of this delightful village setting.

THE PROPERTY

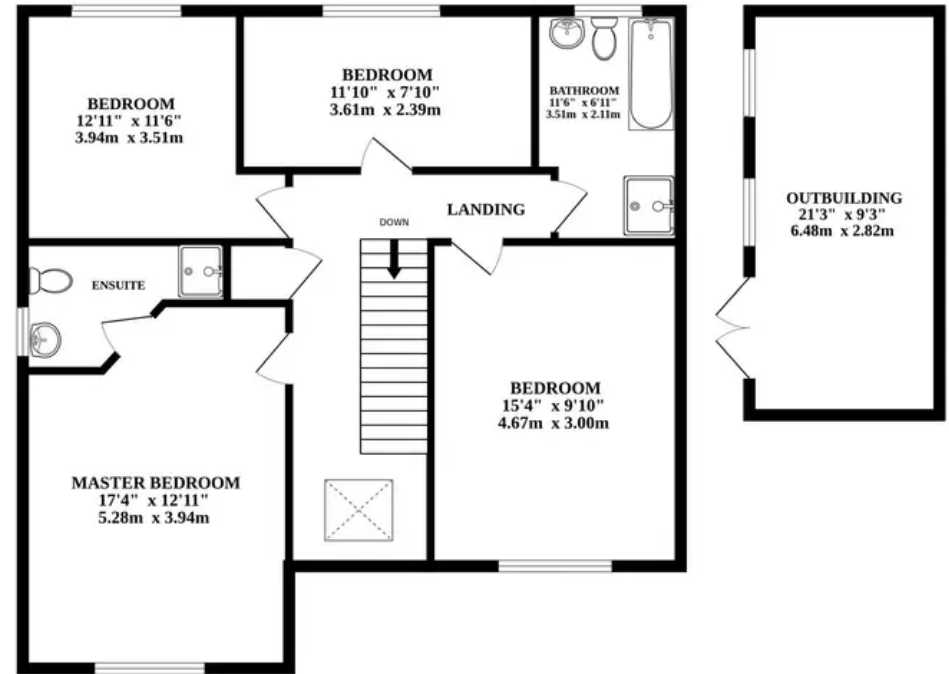
Welcome to this exceptional four-bedroom property, perfectly blending comfort and



GROUND FLOOR



1ST FLOOR



3 BEETLEY MEADOWS, BEETLEY.



Whilst every attempt has been made to ensure the accuracy of the floorplan contained here, measurements of doors, windows, rooms and any other items are approximate and no responsibility is taken for any error, omission or mis-statement. This plan is for illustrative purposes only and should be used as such by any prospective purchaser. The services, systems and appliances shown have not been tested and no guarantee as to their operability or efficiency can be given.
 Made with Metropix ©2024