

FOR SALE



Cerne Abbas, 46 The Avenue
£815,000


MARTIN&CO



Cerne Abbas, 46 The Avenue
Branksome Park, Poole
£815,000

- Branksome Park
- Council Tax Band G £3413.73 PA
- Four Double Bedrooms
- large Balcony & Terrace
- Gated Development
- Two Bathrooms
- Four Storey Town House
- Two Receptions



Cerne Abbas is an exclusive development of Georgian style townhouses set in a gated development, originally constructed by one of the area's leading developers. It benefits from a wonderful location on the site of what was formerly one of the area's grandest homes, barely more than half a mile from the beach at Branksome Chine. There are beautiful communal grounds in the centre of the development over which this superb home has an especially picturesque view.

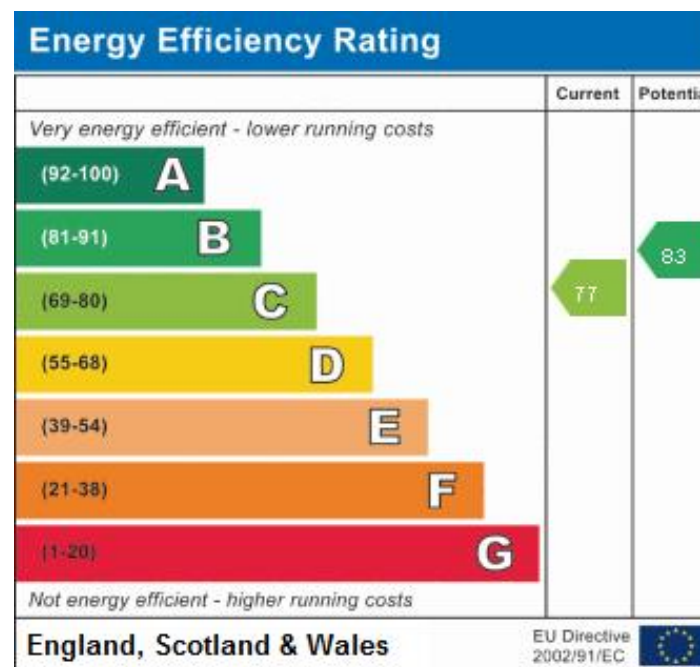
One of the larger designed Town houses benefitting from four double bedrooms, two bathrooms, two reception rooms and a large balcony and patio terrace both overlooking the manicured communal gardens.

On entering the property there is a spacious entrance hall with downstairs Cloakroom, kitchen dining room with modern fitted eye and base units ample work tops and some integrated appliances, a small set of steps give access to the living room with doors leading onto the patio terrace overlooking the communal gardens. The lower ground floor has a utility room with space for a washing machine and dryer with a side door to the driveway, the double garage is currently being used as a well-equipped home gym.

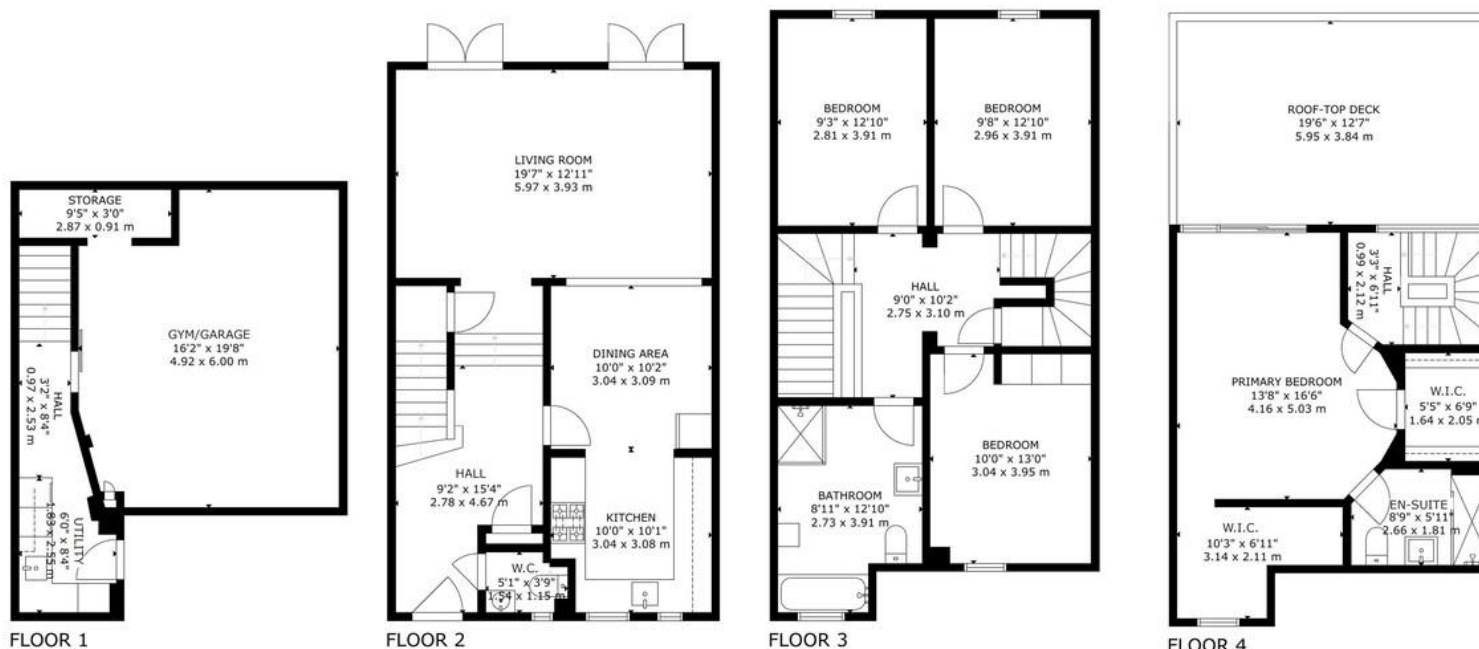


The first floor has three well-proportioned double bedrooms and a good-sized full family bathroom suite, the top floor houses the master bedroom suite with his and hers walk in wardrobes, ensuite shower room, great size master bedroom with doors to a large sun terrace overlooking the grounds.

Gated development, garage and drive, intercom, gas fired central heating and double glazing, internal viewing recommended.







GROSS INTERNAL AREA
TOTAL: 202 m²/2,182 sq.ft
FLOOR 1: 40 m²/430 sq.ft, FLOOR 2: 61 m²/659 sq.ft
FLOOR 3: 62 m²/672 sq.ft, FLOOR 4: 39 m²/421 sq.ft
EXCLUDED AREAS: ROOFTOP-DECK: 23 m²/246 sq.ft
SIZE AND DIMENSIONS ARE APPROXIMATE, ACTUAL MAY VARY



Martin & Co Poole

109 Commercial Road • • Poole • BH14 0JD
T: 01202 710171 • E: poole@martinco.com

01202 710171

<http://www.poole.martinco.com>



Accuracy: References to the Tenure of a Property are based on information supplied by the Seller. The Agent has not had sight of the title documents. A Buyer is advised to obtain verification from their Solicitor. Items shown in photographs including but not limited to carpets, fixtures and fittings are not included unless specifically mentioned within the sales particulars. They may however be available by separate negotiation. Buyers must check the availability of any property and make an appointment to view before embarking on any journey to see a property. No person in the employment of the agent has any authority to make any representation about the property, and accordingly any information given is entirely without responsibility on the part of the agents, sellers(s) or lessors(s). Any property particulars are not an offer or contract, nor form part of one. **Sonic / laser Tape:** Measurements taken using a sonic / laser tape measure may be subject to a small margin of error. **All Measurements:** All Measurements are Approximate. **Services Not tested:** The Agent has not tested any apparatus, equipment, fixtures and fittings or services and so cannot verify that they are in working order or fit for the purpose. A Buyer is advised to obtain verification from their Solicitor or Surveyor.