



**The Old School House, 15 The Street, Shipton Moyne, Tetbury,
Gloucestershire, GL8 8PN**

£1,650 pcm

This former school masters 3 bedroom house is set in the very heart of the highly sought after Cotswold village of Shipton Moyne, just a stone throw away to the well-regard Cat & Custard Pot pub and the active village hall.

01666 840 886 jamespyle.co.uk interested@jamespyle.co.uk

4 The Old School, High Street, Sherston SN16 0LH
James Pyle Ltd trading as James Pyle & Co. Registered in England & Wales No: 08184953
VAT Reg No: 142054549



The Property

DESCRIPTION This former school masters house is set in the very heart of the highly sought after Cotswold village of Shipton Moyne, just a stone throw away to the well-regard Cat & Custard Pot pub and the active village hall. The property is semi-detached with a very pretty period frontage screened by mature trees and set behind a traditional stone walling. The ground floor accommodation layout includes two front reception room with fireplaces, a modern fitted kitchen with a rear lobby leading out to the garden and a downstairs WC. Upstairs, there are three double bedrooms and a bathroom with shower over bath. There is a small front garden whilst the rear garden is south-facing and laid to patio for low maintenance fully enclosed by high walls. On street parking is easily available to the front, in addition, a rear gate from the garden leads out to parking within the village hall car park.

SITUATION Shipton Moyne is a beautiful and sought after Cotswold village situated 3 miles south of Tetbury. The popular Cat and Custard Pot pub is situated a stone throw from the property whilst the village also has a village hall, church and a playing field. Close by are the market towns of Tetbury and Malmesbury, both towns offer a wide range of shops including Waitrose and Tesco supermarkets, services, excellent schools and leisure

facilities. Junctions 17 & 18 of the M4 are both within 20 minutes' drive providing easy commuter access to Bath, Bristol and Swindon whilst rail services to London-Paddington are available from Chippenham and Kemble.

Directions

The property is located at the centre of the village, directly opposite the Cat & Custard Pot pub. Sat nav postcode GL8 8PN

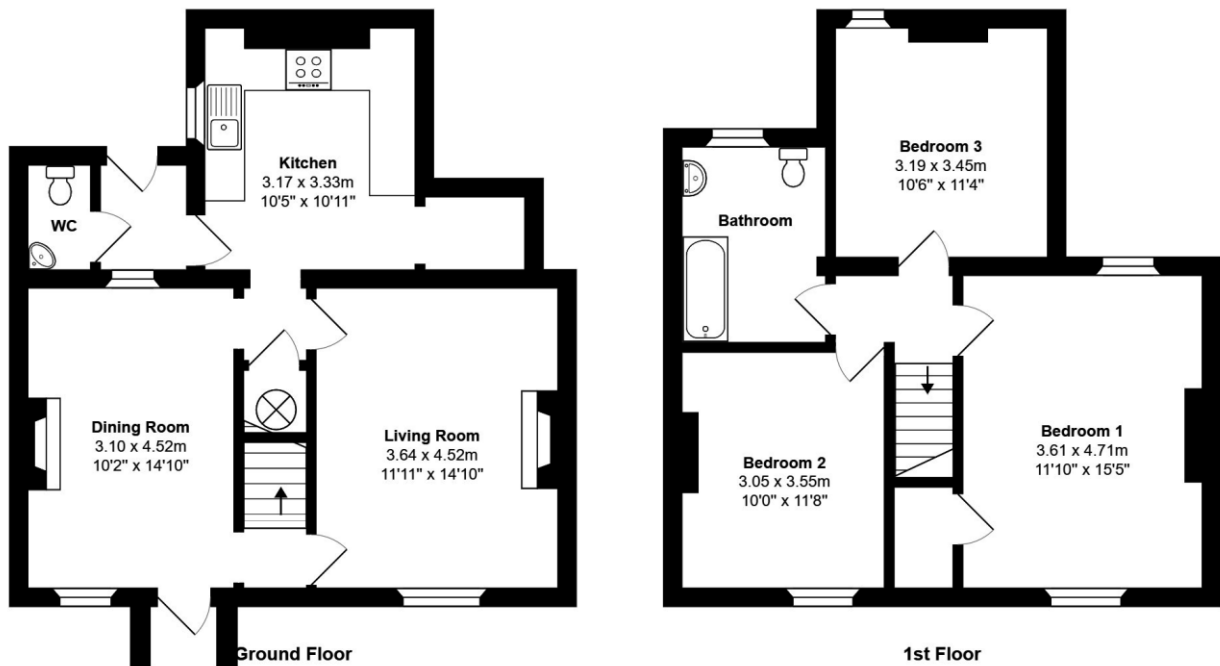
Local Authority

Cotswold District Council

Council Tax

D £2,064

Score	Energy rating	Current	Potential
92+	A		
81-91	B		82 B
69-80	C		
55-68	D		
39-54	E	54 E	
21-38	F		
1-20	G		



Total Area: 109.3 m² ... 1177 ft²

All measurements are approximate and for display purposes only