



Beacon House, Hemstal Road, West Hampstead

London

£550,000



Beacon House, Hemstal Road

West Hampstead, London

Garrison Estates is delighted to introduce to the market this lovely apartment situated on the top floor of this mansion block within this quiet treeline residential road and with amazing views over the green open space of Kilburn Grance Park.

Council Tax band: D

Tenure: Leasehold

EPC Energy Efficiency Rating: D

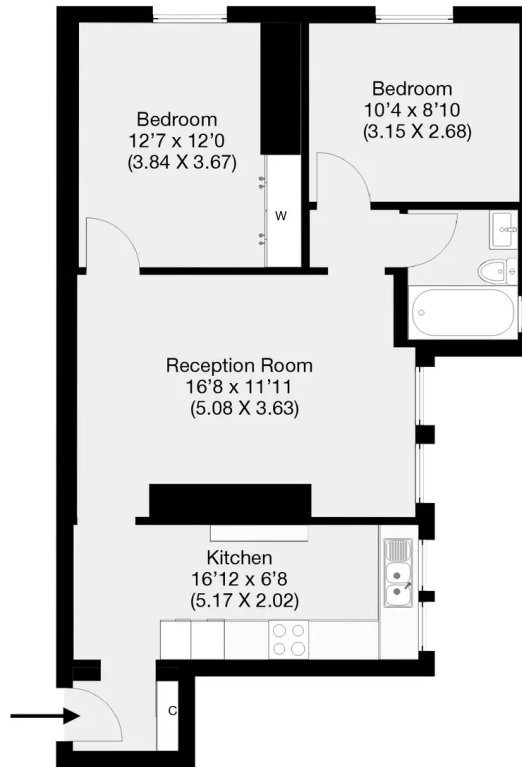
EPC Environmental Impact Rating:





Beacon House, Hemstal Road, London, NW6

Approximate Gross Internal Area 58.1 sqm / 625 sqft



4th Floor

THIS FLOOR PLAN IS PRODUCED FOR GARRISON ESTATES SUBMITTED BY ARCHIMEDIA web: www.archi-media.co.uk

Whilst every attempt has been made to ensure the accuracy of the floor plan contained here, measurements of doors, windows and rooms are approximate and no responsibility is taken for any error, omission or misstatement. These plans are for representation purposes only and should be used as such by any prospective buyer or lease. Specifically no guarantee is given on the gross internal floor area of the property if quoted on this plan and any figures given is initial guidance only and should be treated as such.



Garrison Estates

22 Notting Hill Gate, London - W11 3JE

020 4511 4820 • contact@garrisonestates.co.uk • www.garrisonestates.co.uk/