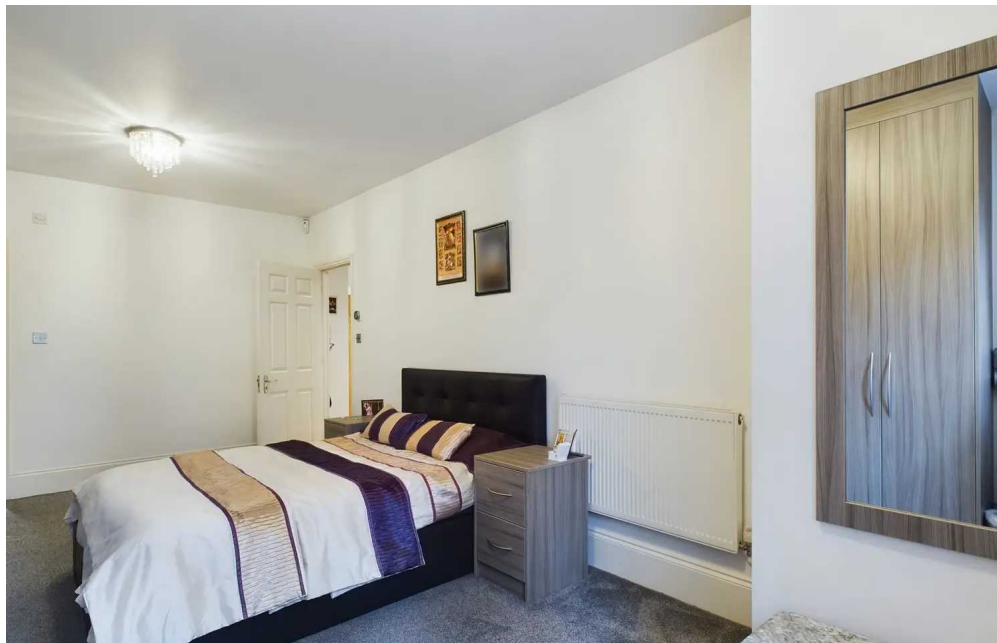
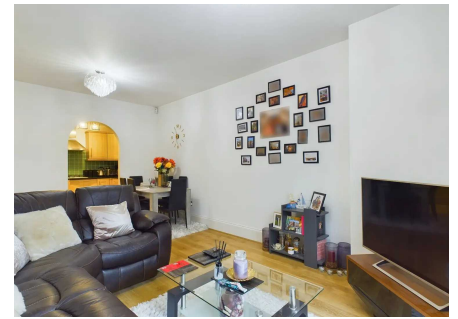


Princess Park Manor Royal Drive, London

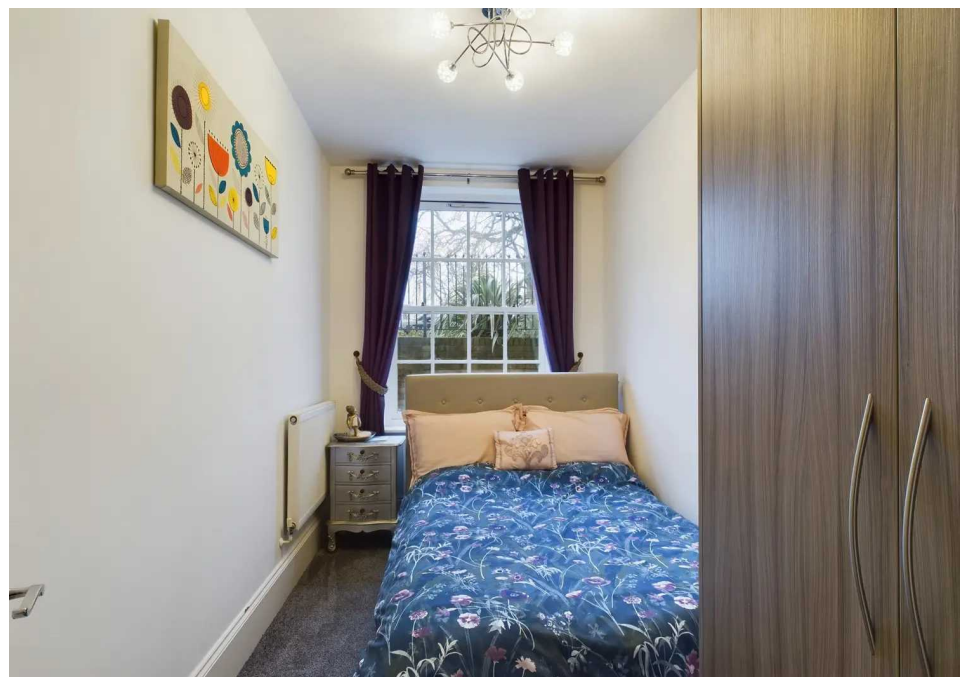
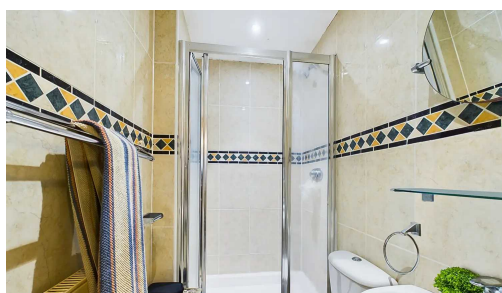
£475,000 Leasehold

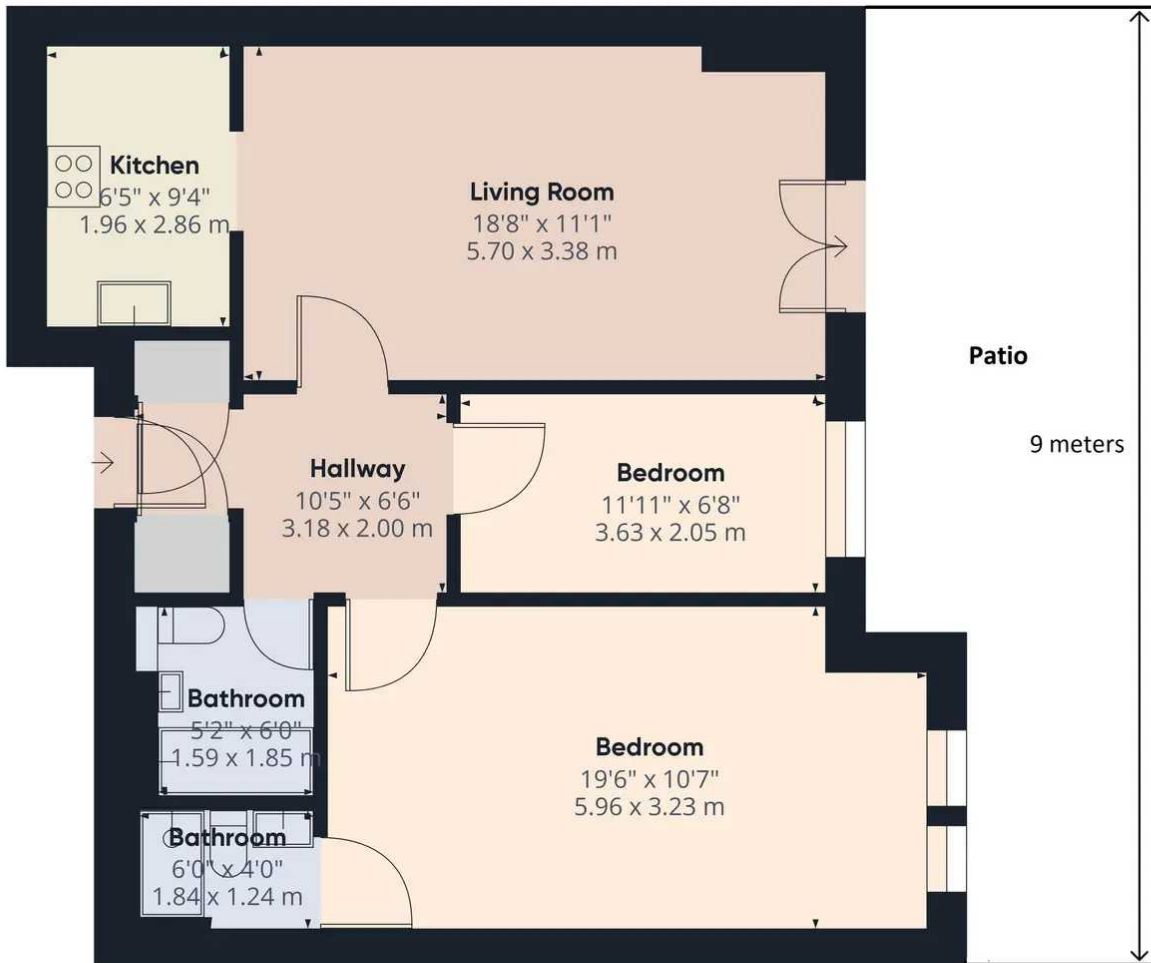
Stylish and spacious ground floor flat in Princess Park Manor. Features a bright living room, separate kitchen, 2 bathrooms, patio. Amenities, parks, large communal park, tennis courts, and an onsite gym. Close to New Southgate and Arnos Grove stations. Ideal for families and first time buyers.

Oyster Properties is proud to present this stylish and spacious 2 bedroom ground floor flat in Princess Park Manor. The apartment features a bright and welcoming living room, separate kitchen, two bathrooms including an en-suite and a patio. Good local amenities parks are nearby. Further benefits from a large communal park and tennis courts and an onsite gym. It is within close proximity to the New Southgate Station and Arnos Grove Tube Station, making commuting a breeze into the city. Additionally, the neighborhood has good schools nearby like St Paul's CofE Primary School and Holly Park Primary School, making it ideal for families and first time buyers



- Chain Free
- 2 Good-Sized Bedrooms with Fitted Wardrobes
- 2 Bathrooms (One En-suite)
- Lease Remaining : 102 Years
- Secured Allocated Parking Space
- Service Charge: £3500 PA
- Ground Rent: £550 PA
- Potential Rental Income: Approx. £2000 PCM
- Council Tax Band: E





Approximate Total Area
689.79 ft²
64.08 m²

For Illustration purposes only, not to scale

