

2 bedroom, 2nd floor apartment in central Redhill with 1 allocated parking space.

Available now.

HOLDING DEPOSIT £300

Equivalent to 1 weeks rent. The deposit is required whilst reference/credit checks are being undertaken. This sum will be deducted from the first months rent. Should the tenancy not proceed to occupation the deposit is non-returnable.

DEPOSIT £1,500

Equivalent to 5 weeks rent and returnable at the end of the tenancy providing there are no dilapidations or damages. This will be lodged with the Deposit Protection Scheme.

Appliances:

Dishwasher, washing machine, electric oven, hob and fridge/freezer.



Council tax band: C

EPC rating: C

Current: 78

£1,300 PCM



21 Romanby Court, Mill Street, Redhill, RH1 6PA



PRS Property Redress Scheme

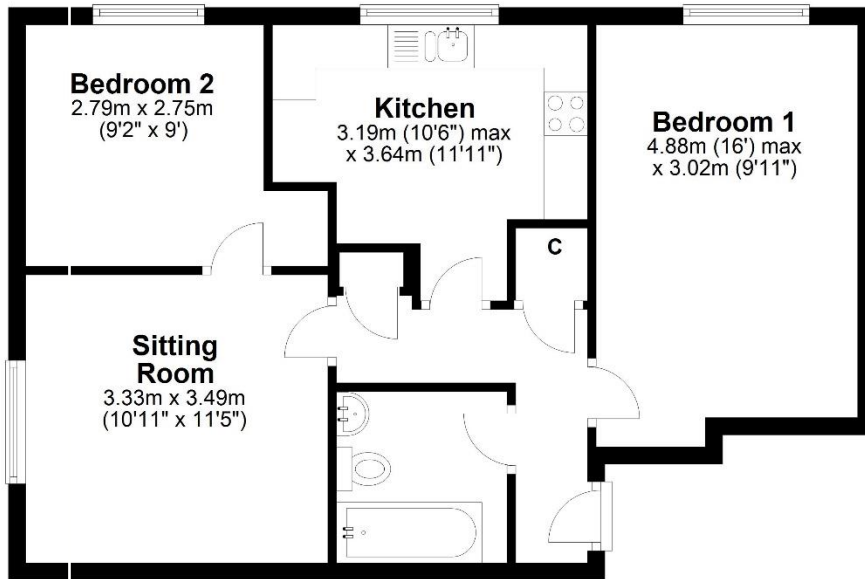
Additional costs:

Water rates, payable monthly in advance by Bank Standing Order. Council Tax and all other utility services will be the tenant(s) responsibility.

Terms of payment: cleared funds must be received by Lewis White 2 days prior to the tenancy. Payment by bankers draft, internet banking or cheque allowing for an additional 5 working days to clear

Second Floor

Approx. 54.8 sq. metres (590.2 sq. feet)



Total area: approx. 54.8 sq. metres (590.2 sq. feet)

Produced by Lewis White, not to scale and indicative only
Plan produced using PlanUp.

2nd floor, no lift.

Central Redhill location.

Available Now.

New carpets and decorated.



PRS Property
Redress
Scheme

**lewis
white**