



ABSOLUTE

Vigilance Avenue, Brixham - TQ5 9FL

Guide Price **£525,000**





Vigilance Avenue

Brixham

Exquisite 4 bed detached house in sought-after location. Spacious living room, modern kitchen diner, 4 double bedrooms (2 with en suites), family bathroom. Utility room, integral garage, driveway. Landscaped garden. High-quality finishes. Internal viewing recommended. Luxury living at its best.

Council Tax band: E

Tenure: Freehold

EPC Energy Efficiency Rating: B

- A beautifully presented high specification detached home
- Living room featuring bay window and double glass doors
- Modern fitted kitchen diner including high end appliances
- Four double bedrooms, two with en suite shower rooms
- Family bathroom
- Utility room
- Integral single garage and driveway parking for two vehicles
- Easy to maintain landscaped garden
- Internal viewing highly recommended



Vigilance Avenue

Brixham

The property is situated on the ever popular Berry Head Park just a short half mile walk from Berry Head Country Park which boasts stunning sea views and Napoleonic forts as well as access to the South West coast path. Brixham town centre is just half a mile distant which boasts an array of shops, amenities and facilities as well as the picturesque Brixham harbour surrounded by a range of boutique shops, bars and restaurants. A local bus service passes the adjacent road with connections to the town centre where you can find the main 12 bus service with further connections to the neighbouring towns of Paignton and Torquay. Both primary and secondary schooling are located within a half to two thirds of a mile level walk.

Absolute Sales & Lettings

Absolute Sales & Lettings, 36 Fore Street - TQ5 8DZ

01803 214214

brixham@movewithabsolute.co.uk

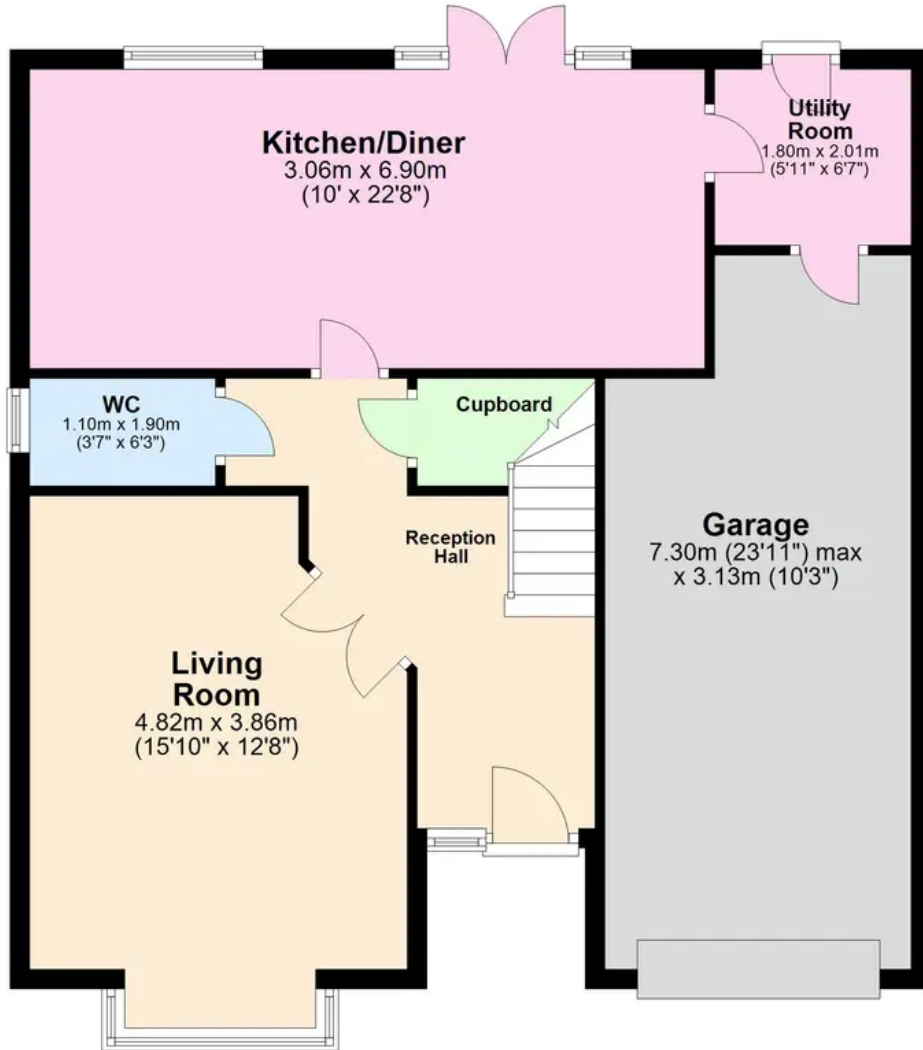
movewithabsolute.co.uk/





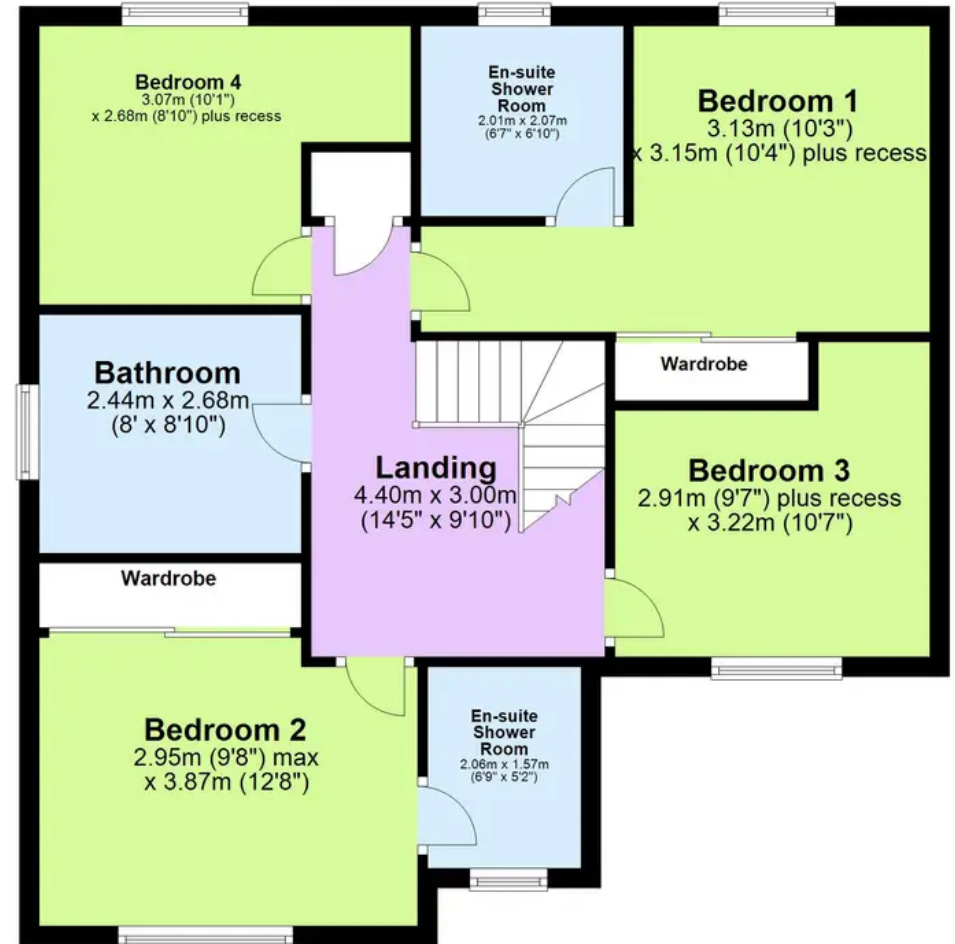
Ground Floor

Approx. 80.6 sq. metres (867.1 sq. feet)



First Floor

Approx. 73.7 sq. metres (793.4 sq. feet)



Total area: approx. 154.3 sq. metres (1660.6 sq. feet)