


Apex House
Camp Road
St. Albans
AL1 5FU

 1 Bedroom

 1 Bathroom

 1 Reception Room

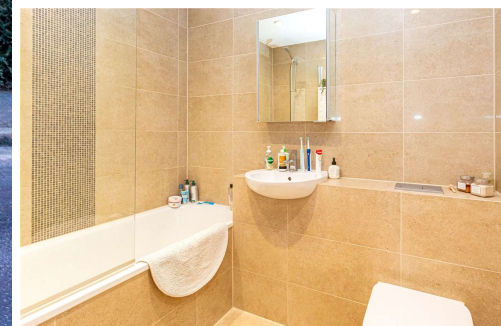
 Secure Underground
Parking

 EPC Band D

Council Tax
Band: C £1,915.66 (2024/2025)
Local Authority
St Albans City & District Council
Service Charge: £1,214.58 per annum
Ground Rent: £310 per annum

Guide Price
£280,000 Leasehold

 **ashtons**
for life's great moves



A modern and beautifully presented one double bedroom, first floor apartment, being offered to the market with no onward chain.

Description

Built in 2018, the apartment comprises internally of an entrance hall with a storage cupboard and entry phone, a generous double bedroom with fitted wardrobes, a stylish bathroom suite and an open-plan kitchen/living room, complete with integral appliances and a high quality finish throughout.

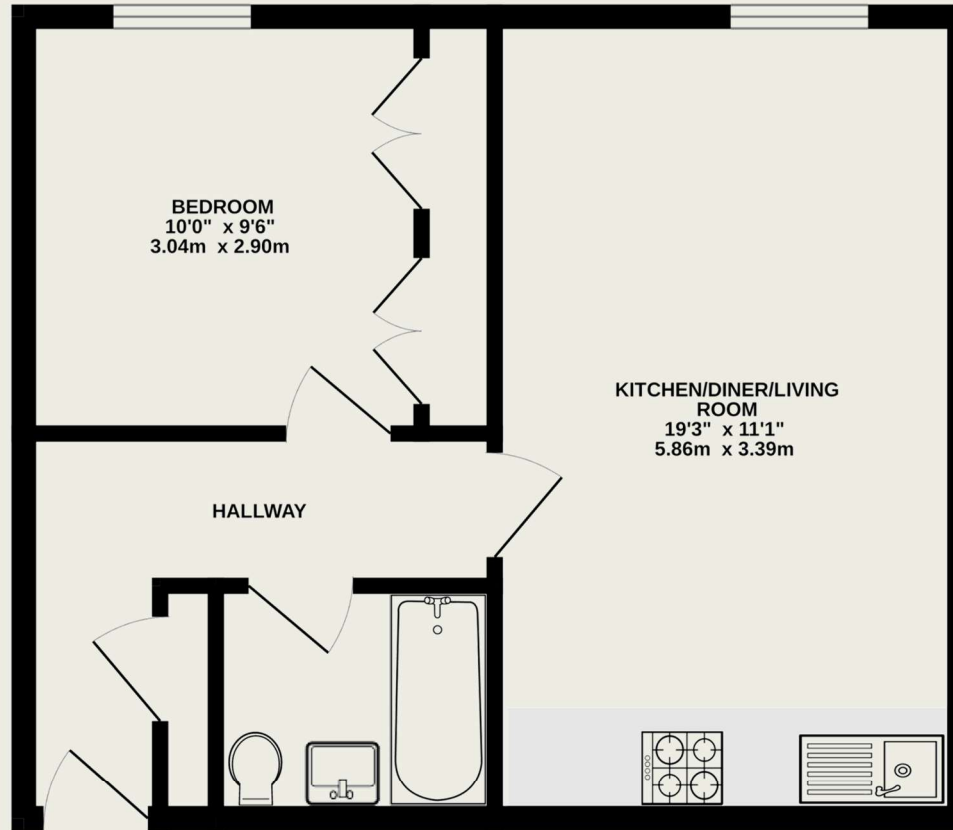
The area proves popular with commuters and the well maintained development is serviced with a lift and the apartment benefits from secure underground parking.

Location

Apex House is very conveniently situated for the mainline railway station which is under ten minutes' walk along Camp Road and Stanhope Road. Neighbourhood shops in Fleetville are close by and the vibrant City centre of St Albans is within walking distance.

Tenure

Leasehold, 125 years from 25th March 2018



TOTAL FLOOR AREA: 430 sq.ft. (39.9 sq.m.) approx.

This floor plan is for illustrative purposes only. The measurement and position of each element is approximate and must be viewed as such

Important Information

These particulars do not constitute an offer or contract in whole or part. The statements contained herein are made without responsibility on the part of Ashtons or the vendors and they cannot be relied upon as representatives of fact. In respect of floor plans, these are for illustrative purposes only. The measurement and position of each element is approximate and must be viewed as such. Intending purchasers should therefore satisfy themselves by inspection or otherwise as to their correctness. The vendors do not make or give, and neither Ashtons nor any person in their employment has any authority to make or give, any representation or warranty whatsoever in relation to this property.

We offer a wide range of services through third-party providers including solicitors, surveyors, removal firms, mortgage providers and EPC suppliers. We receive additional payments for administering suppliers quoting software and making referrals. You are not under any obligation to use these services and it is your discretion whether you choose to deal with these parties or your own preferred supplier. You should be aware the average payment we received in 2021 equated to £48.36 per referral.