

*tavistockbow*

**For Rent**



**People Make Places**

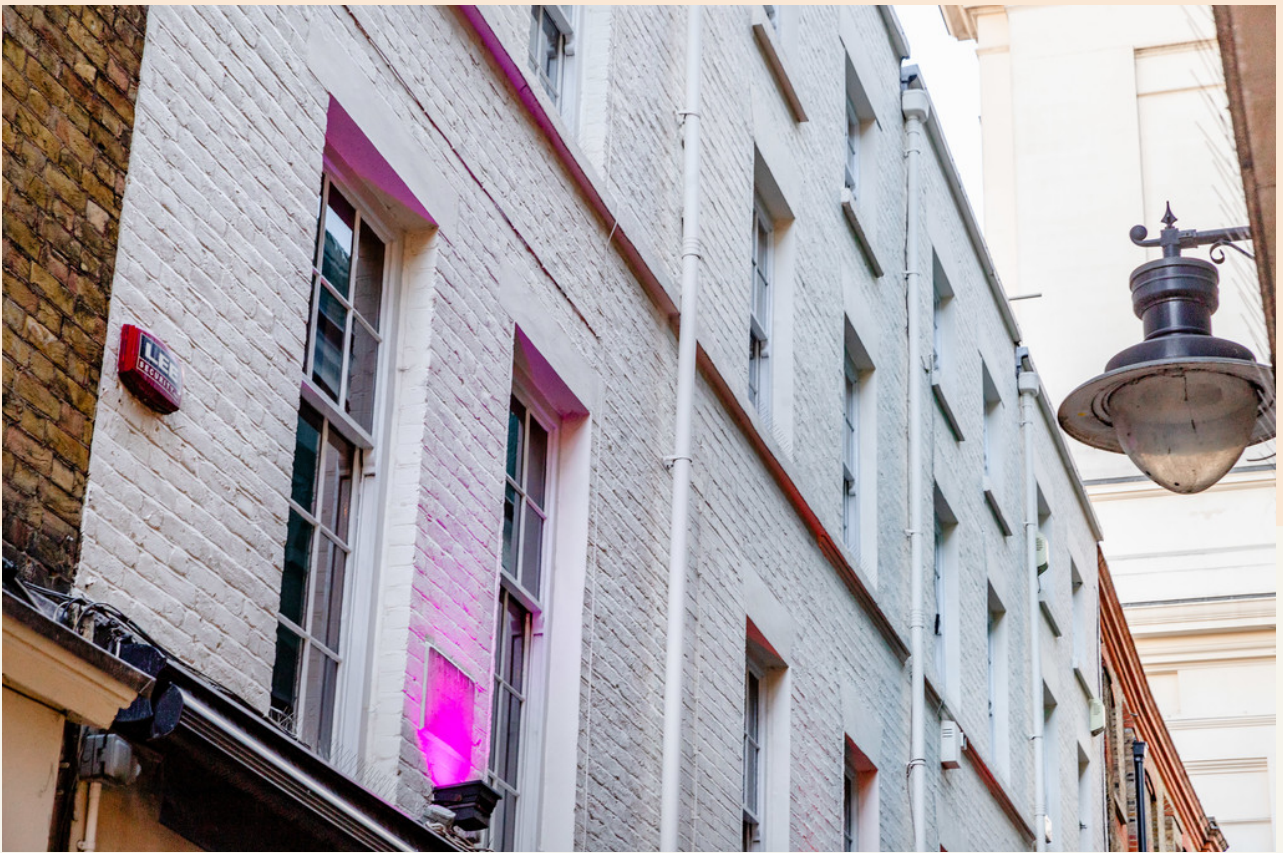


**Hanover Place, Covent Garden WC2**

2 bedrooms | 645 sq ft

£750 pw





A well sized two bedroom, two shower room apartment situation on the 1st floor of a residential building on the corner of Long Acre & Hanover Place, and moments from Covent Garden Piazza and tube station. There is a large open plan kitchen, two double bedrooms with good storage.

#### What you need to know

- Two double bedrooms
- Two shower rooms
- Open plan kitchen reception room
- Wooden floors
- Recently renovated
- Unfurnished
- Available immediately
- 1st floor (walk up)
- Close to Covent Garden tube station
- Moments from Bridge of Inspiration







### Overview

The landlord offers the flat for 1-3 years, with a mutual break clause, as negotiated. The flat comes unfurnished and is available immediately. Good size rooms, make this a great flat for sharers.

**WHAT WE LOVE:** Great location  
Opposite Royal Ballet School  
Lovely sash windows  
Good size double bedrooms  
Modern kitchen

**WHAT YOU NEED TO KNOW:** Good storage  
1st floor  
Walk up  
Great for sharers  
Professionally managed



**Hanover Place, Covent Garden WC2**



**Hanover Place, Covent Garden WC2**



# People Make Places

London is collection of inspiring urban villages and one of the most exciting places in the world to live, work & play.

We work with both property owners and their occupiers, sharing the story of these vibrant neighbourhoods, conveying the unique soul & energy to future custodians, the people who'll keep them buzzing.

And unlike many real estate businesses we're not just about buildings, because streets & buildings don't make a neighbourhood.

We're about building relationships, because **people make places**.

MISINTERPRITATION ACT [COPYRIGHT] DISCLAIMER: Tavistock Bow Ltd for themselves and for the vendor(s) of this property whose agents thy are, given notice that: 1. These particulars do not constitute, not constitute any part of, an offer or contract. 2. None of the statements contained in these particulars as to the property are to be relied on as statements or representations of fact. 3. Any intending purchaser or lessee must satisfy themselves by inspection or otherwise as to the correctness of each of the statements contained in these particulars. 4. The vendor(s) or lessor(s) do not make or give and neither Tavistock Bow Ltd nor any person in their employment has any authority to make or give any representation or warranty whatever in relation to this property. Finance Act 1989, Unless otherwise stated all prices and rents are quote exclusive of VAT. Property Misrepresentation Act 1991; These details are believed to be correct at the time of compilation but may be subject to subsequent amendment.

Follow us:     @tavistockbow

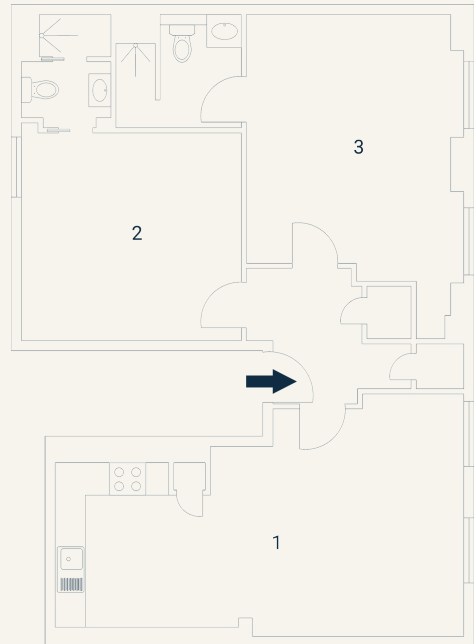
Score	Energy rating	Current	Potential
92+	A		
81-91	B		
69-80	C		
55-68	D		68 D
39-54	E	49 E	
21-38	F		
1-20	G		

Hanover Place, WC2

Approximate Gross Internal Area 60 sq m / 645 sq ft

Second Floor

1 Living / Kitchen	2 Bedroom 3.64 x 3.33M	3 Bedroom 4.30 x 3.61M
Dining 6.49 x 3.90M	11'9" x 10'9"	14'1" x 11'8"
21'2" x 12'7"		



Floorplan produced for Tavistock Bow. Illustration for identification purposes only and not to scale. All measurements are approximate and not to be relied upon.

**tavistockbow**

21 New Row, Covent Garden,  
London, WC2N 4LE

t: 020 7477 2177  
e: hello@tavistockbow.com  
w: tavistockbow.com



**Hanover Place, Covent Garden WC2**