



Corner Cottage, The Street, Effingham. KT24 5LP

£2,185 pcm

GROSVENOR
SURREY



Corner Cottage, The Street

Effingham. KT24 5LP

A delightful three bedroom home, ideally situated within a short walk of local shops and excellent schools both Private and Public.

Recently decorated and with new carpets throughout, this lovely home is light and bright with well proportioned space.

Downstairs the hallway has a double aspect reception room which leads through to the dining room with French doors to the garden. The kitchen has all of the usual appliances, with new hob and dishwasher at a handy chest height. There's also a downstairs loo.

Upstairs are two good-sized double bedrooms both with built in wardrobe. There is a third smaller bedroom with wardrobe and cupboards and modern family bathroom.

Outside the garden wraps around the property. There is a single garage, parking space in the residents communal car park and off-street parking in front of the property. There are excellent schools in the area with the Howard of Effingham School a few minutes walk away. For golfers, Effingham Golf Clun is a short walk away.

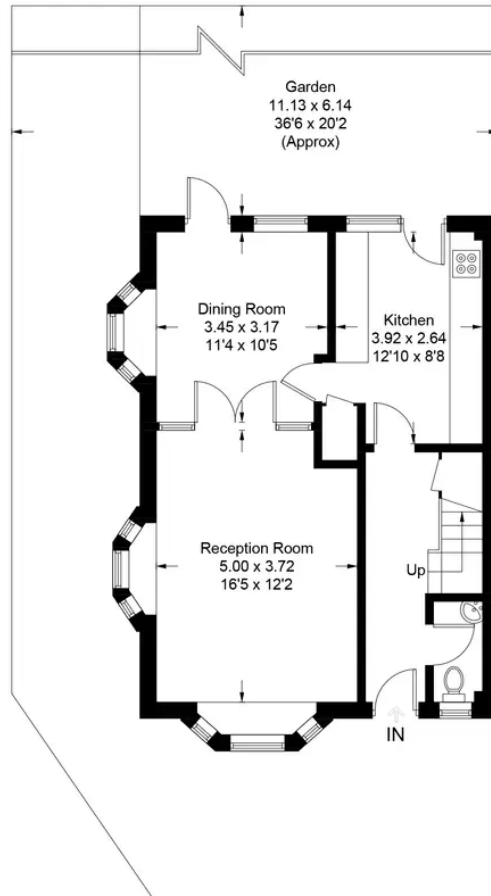
EPC Rating C

Council Tax Band: F

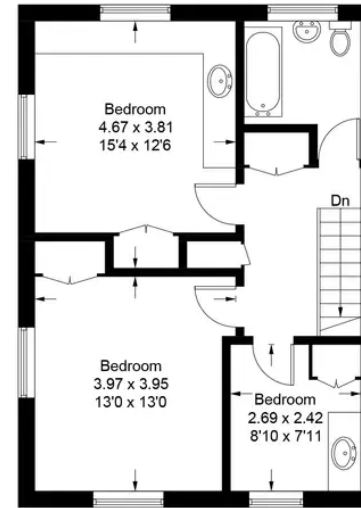


Effingham, KT24

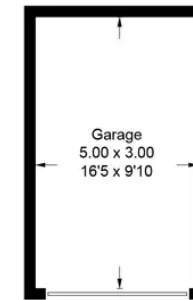
Approximate Gross Internal Area = 104.2 sq m / 1122 sq ft
Garage = 15.0 sq m / 161 sq ft
Total = 119.2 sq m / 1283 sq ft



Ground Floor



First Floor



(Not Shown In Actual
Location / Orientation)

Floor plan produced in accordance with RICS Property Measurement Standards incorporating International Property Measurement Standards (IPMS2 Residential).
Produced for Gascoignes Residential Ltd by IDENTIKA LTD.

Grosvenor Surrey - Cobham

Grosvenor Surrey, 8 High Street, Cobham - KT11 3DY

01932 588288 · cobham@wearegrosvenor.co.uk · <http://www.wearegrosvenor.co.uk>

GROSVENOR
SURREY