



P U T T E R I L L S

est. 1992

29 Tower Close, Little Wymondley, Hertfordshire, SG4 7JG

Guide Price: £450,000

A beautifully presented three bedroom property in the sought after village of Little Wymondley.

A welcoming entrance hall leads to a bright and airy living space. The spacious dual-aspect living room has French doors opening onto the rear garden. A contemporary open-plan kitchen/dining area, complete with good-quality fittings, integrated appliances, and sleek worktops. There are three well-proportioned bedrooms, each boasting built-in storage and picturesque views. The main and second bedrooms overlook the charming front garden and village green. A family bathroom comprises a three-piece suite with a window to the rear aspect.

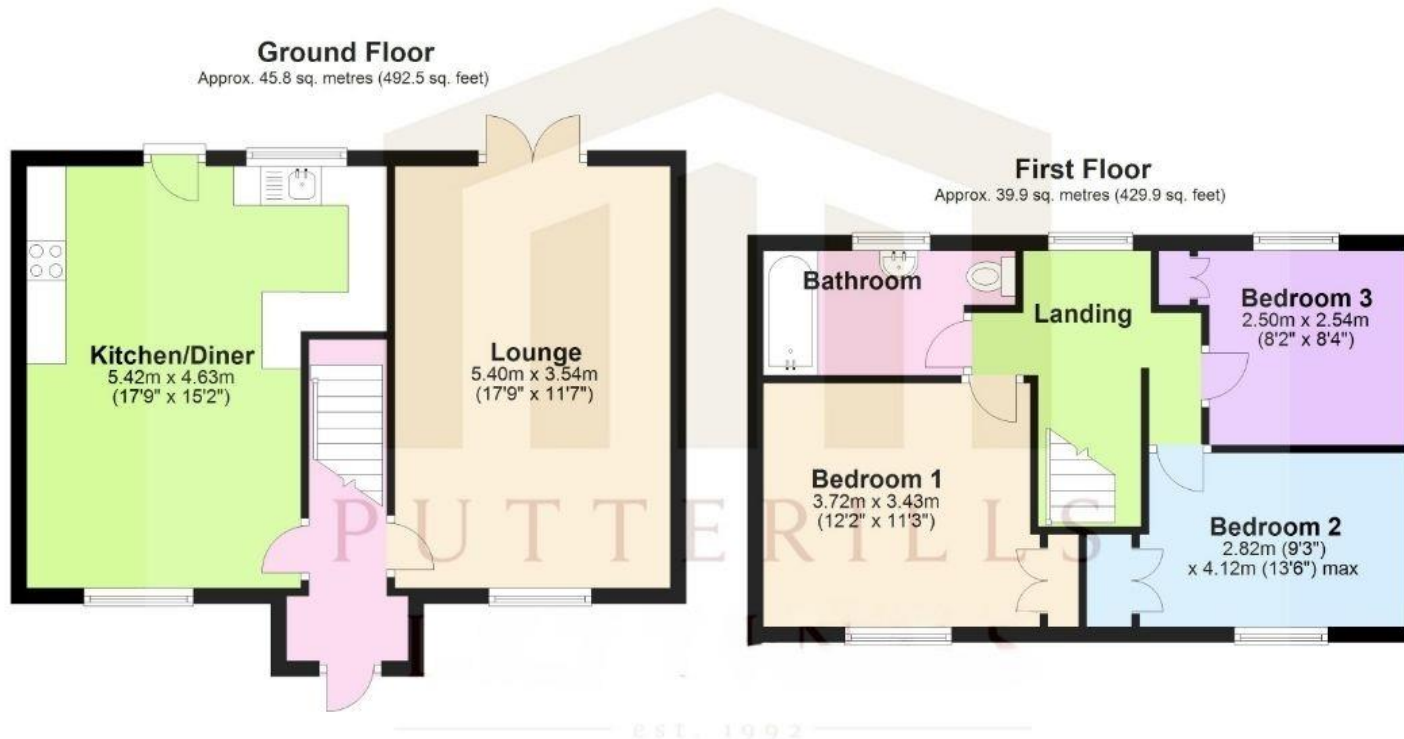
There is a spacious front garden laid to lawn with hedge borders with ample off-street parking. To the rear is a secluded garden, creating a peaceful retreat with a combination of lawn, decking, and patio areas.

Local Amenities: A short stroll to two welcoming village pubs and a reputable primary school. Lovely local park, tennis/ basketball courts. Easy access to Hitchin, Stevenage, and the A1, ideal for commuting.









Total area: approx. 85.7 sq. metres (922.4 sq. feet)

Approximate measurements not to scale for room identification purposes only