

Winchester Road, Salford

Salford



In Excess of £220,000

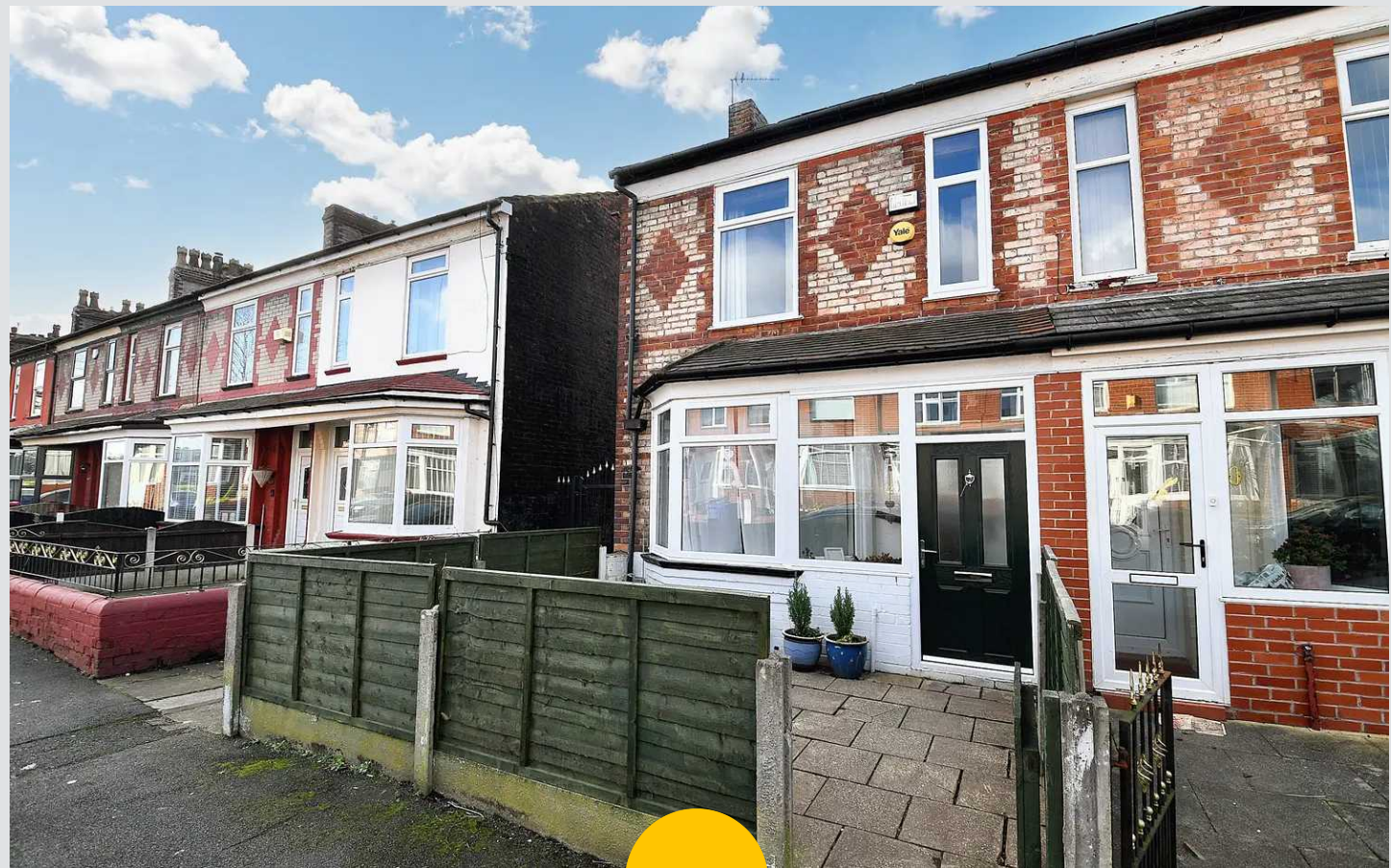
# Winchester Road

Salford

**\*\*Beautifully Presented, Three Bedroom End Terraced Property Located in a Sought-After Area, Within Walking Distance of Salford Royal Hospital, Light Oaks Primary School and Several Well-Kept Parks\*\***

Council Tax band: B

- Beautifully Presented Three Bedroom End Terrace
- Sought-After Location, Great for Families and Professionals Alike
- Within Walking Distance of Salford Royal Hospital, Light Oaks Primary School and Several Well-Kept Parks
- Bay-Fronted Lounge and a Spacious Dining Room
- Modern Fitted Kitchen with the Added Benefit of a Utility Room
- Contemporary, Three-Piece Family Bathroom
- Three Spacious Bedrooms
- Low-Maintenance Courtyard Garden to the Front and a Stylish Paved Garden to the Rear
- Ideal First Time Home or Investment, Viewing is Highly Recommended!



HILLS

### Entrance Hallway

UPVC door to the front, ceiling light point and wall-mounted radiator.

### Lounge

14' 8" x 11' 4" (4.47m x 3.45m)

Double glazed bay window to the front, ceiling light point, wall-mounted radiator, wall-mounted light point, gas fire and carpeted floors.

### Dining Room

12' 11" x 14' 8" (3.93m x 4.47m)

Double glazed window to the rear, ceiling light point and wall-mounted radiator.

### Kitchen

8' 11" x 13' 6" (2.72m x 4.11m)

Fitted with a range of wall and base units with complimentary roll top work surfaces and integrated stainless steel sink and drainer unit. Four ring gas hob and oven, space for fridge/freezer and ceiling light point. Double glazed window to the side, UPVC door to the side, tiled splashbacks and tiled flooring.

### Utility Room

9' 5" x 5' 0" (2.87m x 1.52m)

Double glazed window to the side, ceiling light point, boiler, space for washing machine and space for dryer.

### First Floor Landing

Ceiling light point and access to a boarded loft.

### Bedroom One

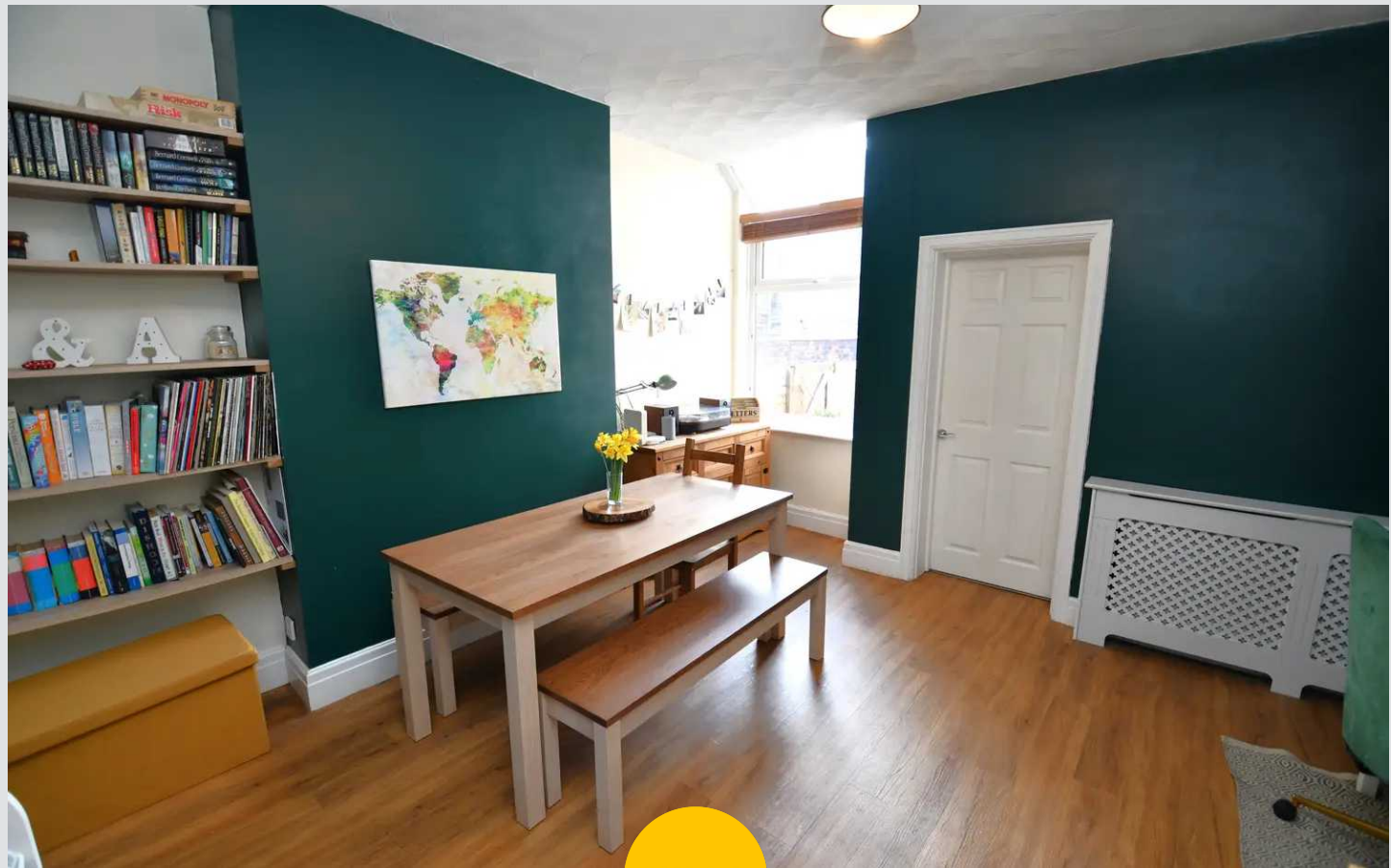
11' 9" x 14' 7" (3.58m x 4.44m)

Two double glazed windows to the front, ceiling light point, wall-mounted radiator and carpeted floors.

### Bedroom Two

12' 11" x 8' 10" (3.93m x 2.69m)

Double glazed window to the rear, ceiling light point, wall-mounted radiator and carpeted floors.



**Bedroom Three**

6' 9" x 5' 0" (2.06m x 1.52m)

Double glazed window to the rear, ceiling light point, wall-mounted radiator and carpeted floors.

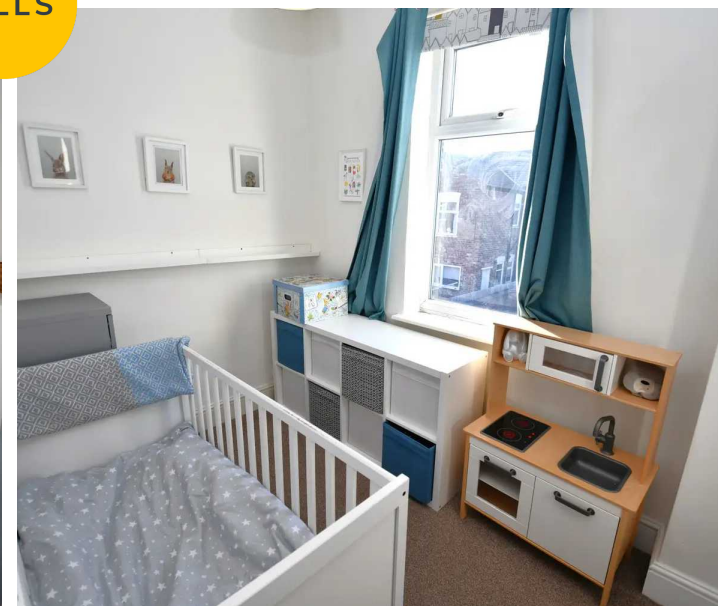
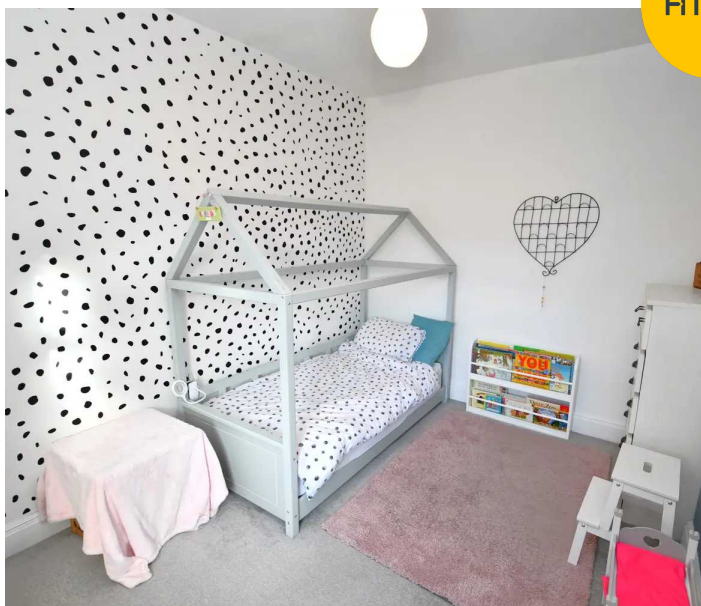
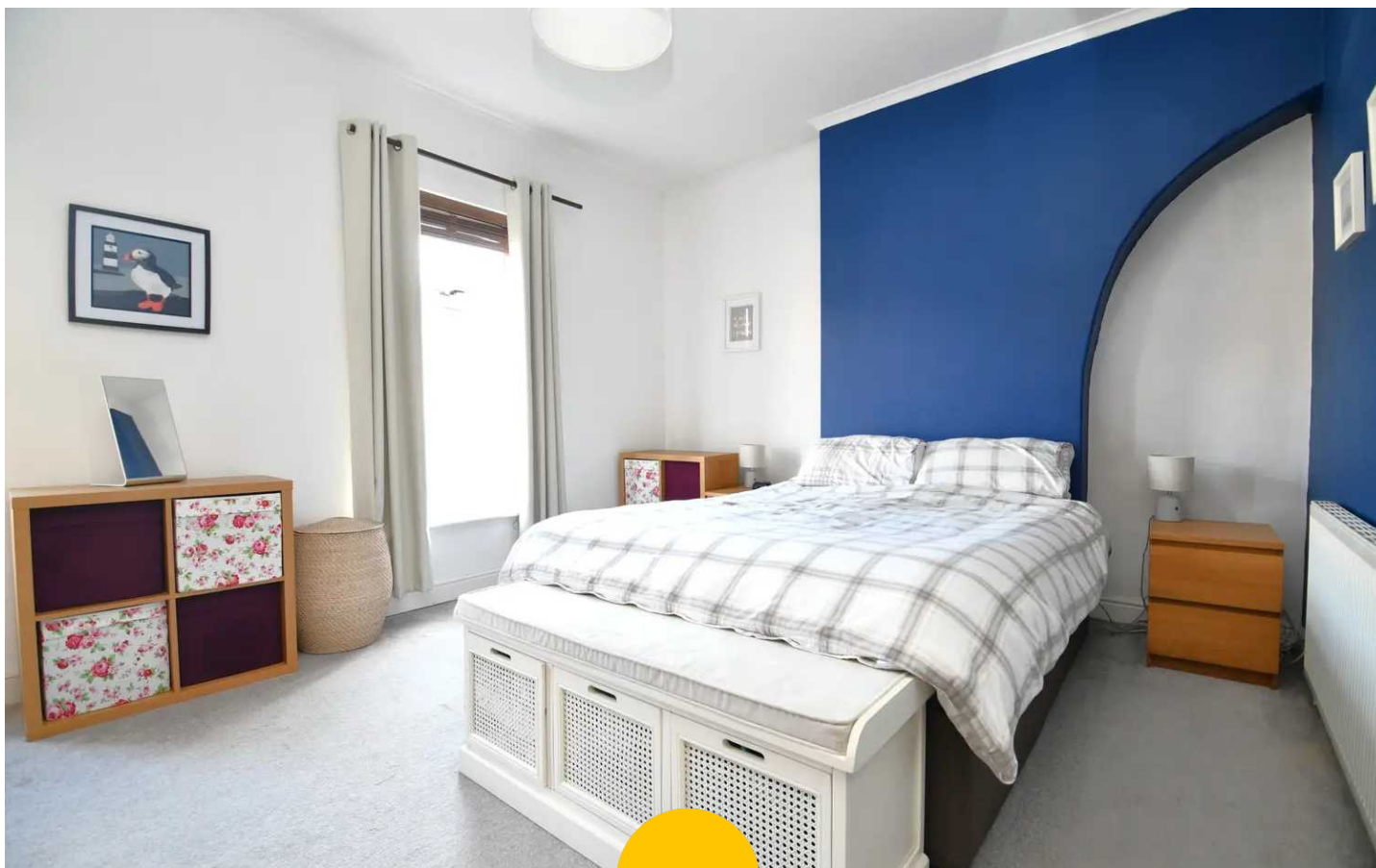
**Bathroom**

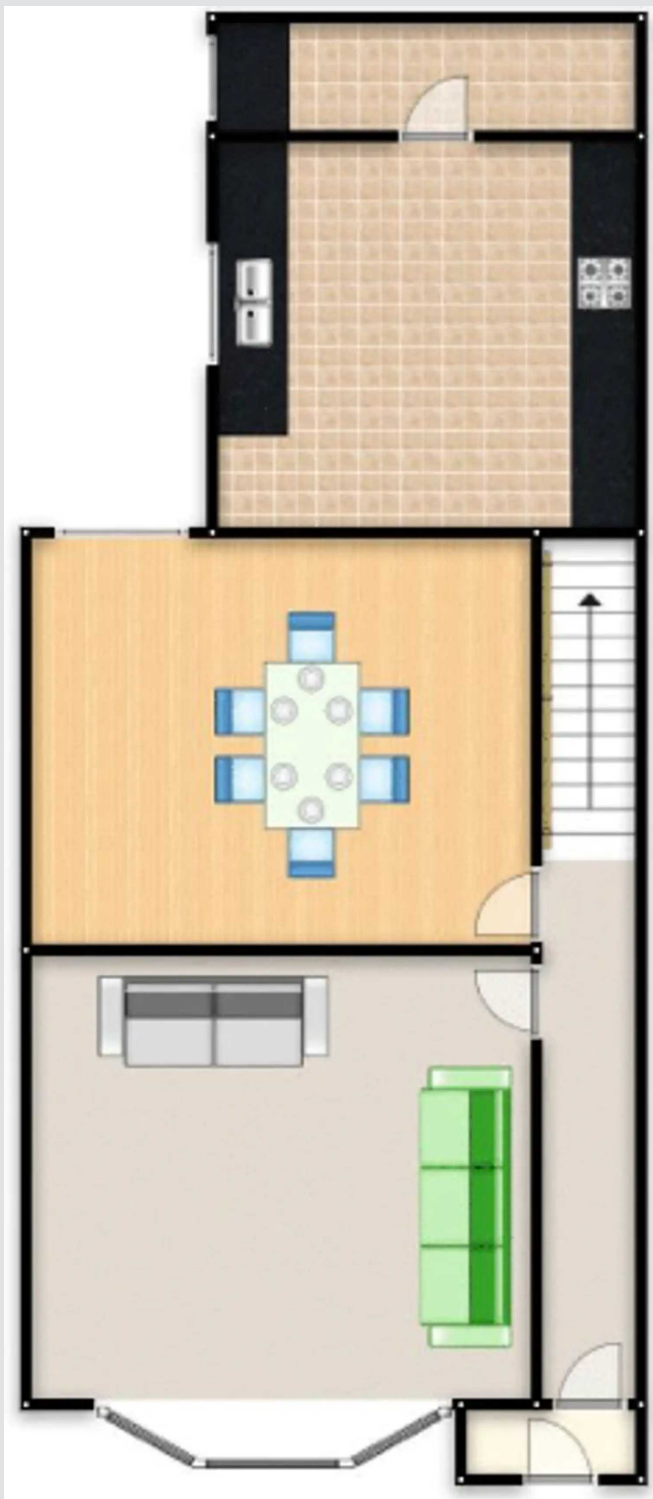
6' 3" x 6' 0" (1.90m x 1.83m)

Fitted three piece suite comprising of low level WC, pedestal hand wash basin and bath with thermostatic shower over. Double glazed window to the side, wall-mounted radiator, three ceiling spotlights, tiled walls and tiled flooring.

**External**

There is a paved yard to the rear of the property.







## Hills | Salfords Estate Agent

Hills Residential, Sentinel House Albert Street - M30 0SS

0161 707 4900

[sales@hills.agency](mailto:sales@hills.agency)

[www.hills.agency/](http://www.hills.agency/)



THE PROPERTY MISDESCRIPTIONS ACT 1991 The Agent has not tested any apparatus, equipment, fixtures and fittings or services and so cannot verify that they are in working order or fit for the purpose. A Buyer is advised to obtain verification from their Solicitor or Surveyor. References to the Tenure of a Property are based on information supplied by the Seller. The Agent has not had sight of the title documents. A Buyer is advised to obtain verification from their Solicitor. You are advised to check the availability of this property before travelling any distance to view. Every effort and precaution has been made to ensure these particulars are correct and not misleading but their accuracy is not guaranteed nor do they form part of any contract. If there is any point which is of particular importance to you, please contact us and we will provide any information you require. This is advisable, particularly if you intend to travel some distance to view the property. The mention of any appliances and services within these details does not imply that they are in full and efficient working order. These particulars are in draft form awaiting Vendors confirmation of their accuracy. These details must therefore be taken as a guide only.