



Caythorpe Mopley, Langley
£549,950



Caythorpe Mopley

Langley, Southampton

This immaculately presented chalet must be viewed to fully appreciate the deceptive accommodation on offer. Internally there are three double bedrooms, a large lounge/dining room, a well appointed kitchen, an orangery, two ground floor shower rooms and a further bathroom. Outside of the property is a well maintained wrap around garden, a double garage and extensive driveway parking to front and side. Further features include UPVC double glazing, gas central heating and under floor heating. A truly stunning property that offers versatile accommodation throughout.

Mopley is positioned on the edge of The New Forest National Park and just a short drive or bike ride from the local beaches at Lepe Country Park and Calshot. There are various amenities conveniently placed in Blackfield centre including schools, shops and bus services to the surrounding areas including Hythe and Southampton. Many indoor and outdoor activities can be enjoyed at local sports centres and there is a golf course at neighbouring Dibden.

Council Tax band: E

Tenure: Freehold



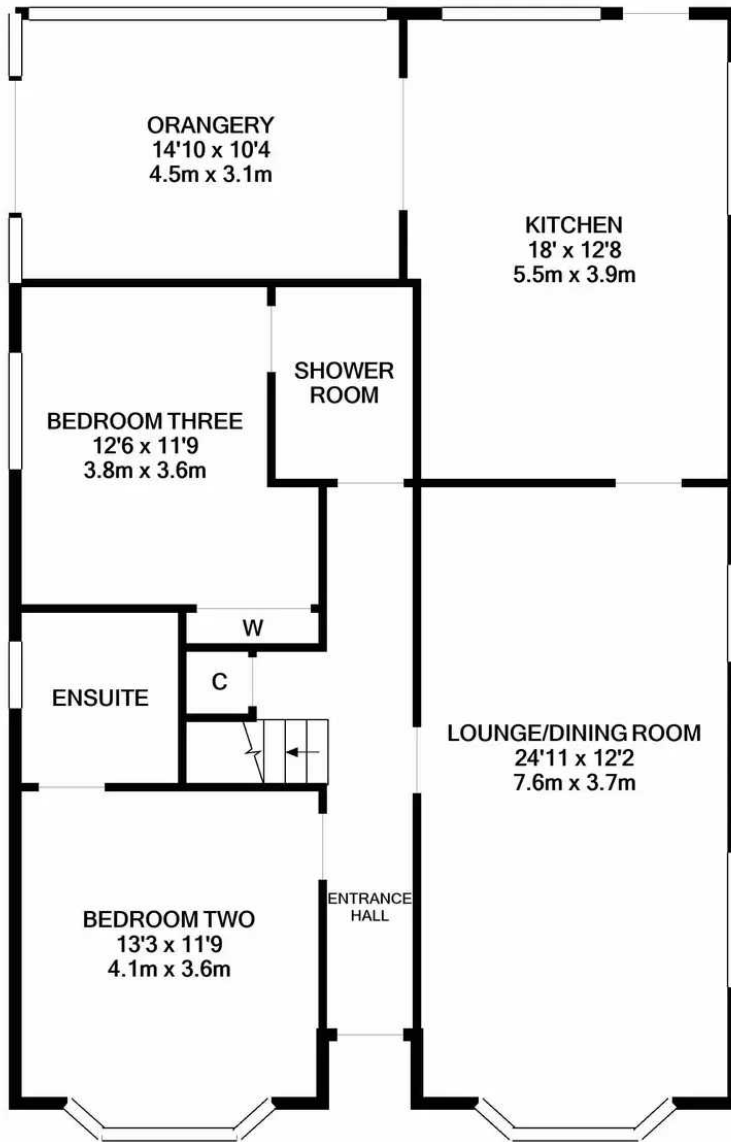
1 Southward House
Dibden Purlieu SO45 4PT



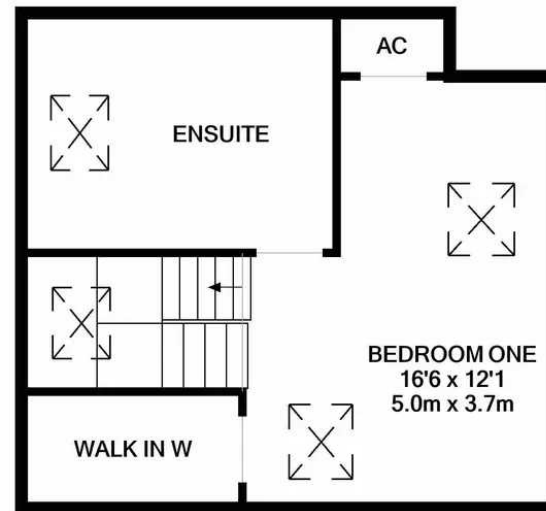
T: 02380 844405

info@anthonyjamesproperties.co.uk





GROUND FLOOR
APPROX. FLOOR
AREA 1154 SQ.FT.
(107.2 SQ.M.)



1ST FLOOR
APPROX. FLOOR
AREA 379 SQ.FT.
(35.2 SQ.M.)

TOTAL APPROX. FLOOR AREA 1533 SQ.FT. (142.5 SQ.M.)

Whilst every attempt has been made to ensure the accuracy of the floor plan contained here, measurements of doors, windows, rooms and any other items are approximate and no responsibility is taken for any error, omission, or mis-statement. This plan is for illustrative purposes only and should be used as such by any prospective purchaser. The services, systems and appliances shown have not been tested and no guarantee as to their operability or efficiency can be given