

FOR SALE

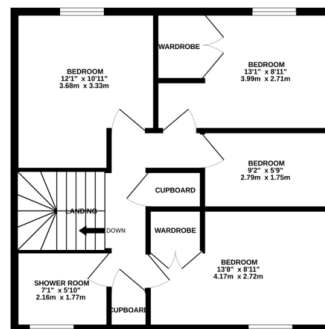
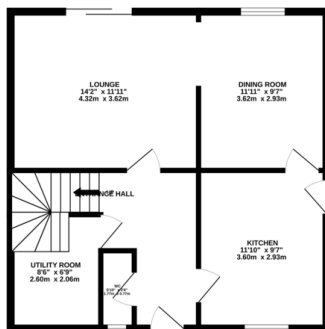
4 Bed End Town House in Knightsbridge Road, Glen Parva, LE2 9TZ
£240,000

This property may well be the best value for money home coming to the market! The accommodation is a really good size all the way through and comprises entrance hall, downstairs w.c., utility room, lounge, dining room, kitchen, four bedrooms, shower room and wrap around rear garden. This is one not to miss!



GROUND FLOOR
562 sq.ft. (52.2 sq.m.) approx.

1ST FLOOR
562 sq.ft. (52.2 sq.m.) approx.



TOTAL FLOOR AREA: 1124 sq.ft. (104.4 sq.m.) approx.
Whilst every attempt has been made to ensure the accuracy of the floorplan contained here, measurements of doors, windows, rooms and any other items are approximate and no responsibility is taken for any error, omission or mis-statement. This plan is for illustrative purposes only and should be used as such by any prospective purchaser. The services, systems and specifications shown have not been tested and no guarantee as to their operability or efficiency can be given.
Made with Metropix C2024

EPC to follow

- End Town House
- Four Bedrooms
- Utility Area
- Downstairs W.C.
- Cul-De-Sac
- Modern Shower Room
- Re-Fitted Kitchen
- Great Rear Garden

Agents Note: Whilst every care has been taken to prepare these sales particulars, they are for guidance purposes only. All measurements are approximate and for general guidance purposes only and whilst every care has been taken to ensure their accuracy, they should not be relied upon and potential buyers are advised to recheck the measurements.

