

6 Orchard Close, Caister-On-Sea

£265,000 Freehold

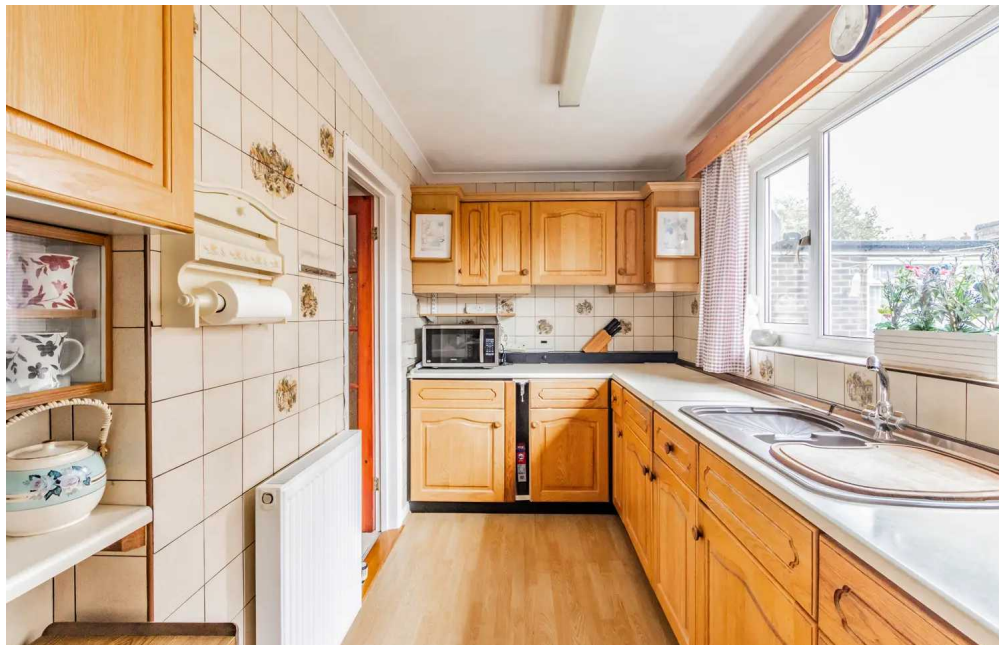
Step into comfort and style at Orchard Close, Caister-On-Sea, where a generous hallway leads you to a well-proportioned living room with plush carpeting. The wooden-themed kitchen, with ample natural light and a dedicated dining area provide an inviting space for culinary delights and entertaining guests. With three bedrooms, a modern bathroom and a great-sized garden featuring a lawn and patio, this property offers versatile living, complemented by a sizeable driveway and a single garage for convenient parking and storage.

Tenure: Freehold

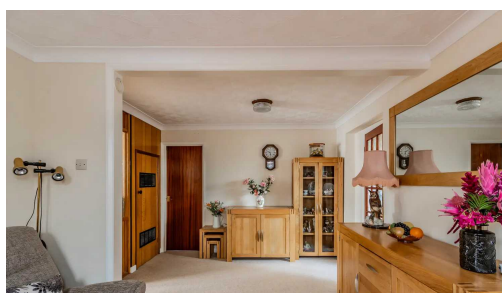
Step into comfort and style at Orchard Close, Caister-On-Sea, where a generous hallway leads you to a well-proportioned living room with plush carpeting. The wooden-themed kitchen, with ample natural light and a dedicated dining area provide an inviting space for culinary delights and entertaining guests. With three bedrooms, a modern bathroom and a great-sized garden featuring a lawn and patio, this property offers versatile living, complemented by a sizeable driveway and a single garage for convenient parking and storage.

LOCATION

Nestled in the coastal charm of Caister-On-Sea, Orchard Close offers a prime location enriched with conveniences. With accessible bus links, commuting is a breeze, while the short walk to Caister Beach presents an enticing opportunity for seaside strolls and relaxation. The locality boasts local pubs, a golf course, Tesco for daily needs and the convenience of the Caister bypass, ensuring a well-rounded and accessible living experience for residents.



Step into comfort and style at Orchard Close, Caister-On-Sea, where a generous hallway leads you to a well-proportioned living room with plush carpeting. The wooden-themed kitchen, with ample natural light and a dedicated dining area provide an inviting space for culinary delights and entertaining guests. With three bedrooms, a modern bathroom and a great-sized garden featuring a lawn and patio, this property offers versatile living, complemented by a sizeable driveway and a single garage for convenient parking and storage.



Step into comfort and style at Orchard Close, Caister-On-Sea, where a generous hallway leads you to a well-proportioned living room with plush carpeting. The wooden-themed kitchen, with ample natural light and a dedicated dining area provide an inviting space for culinary delights and entertaining guests. With three bedrooms, a modern bathroom and a great-sized garden featuring a lawn and patio, this property offers versatile living, complemented by a sizeable driveway and a single garage for convenient parking and storage.

LOCATION

Nestled in the coastal charm of Caister-On-Sea, Orchard Close offers a prime location enriched with conveniences. With accessible bus links, commuting is a breeze, while the short walk to Caister Beach presents an enticing opportunity for seaside strolls and relaxation. The locality boasts local pubs, a golf course, Tesco for daily needs and the convenience of the Caister bypass, ensuring a well-rounded and accessible living experience for residents.

THE PROPERTY

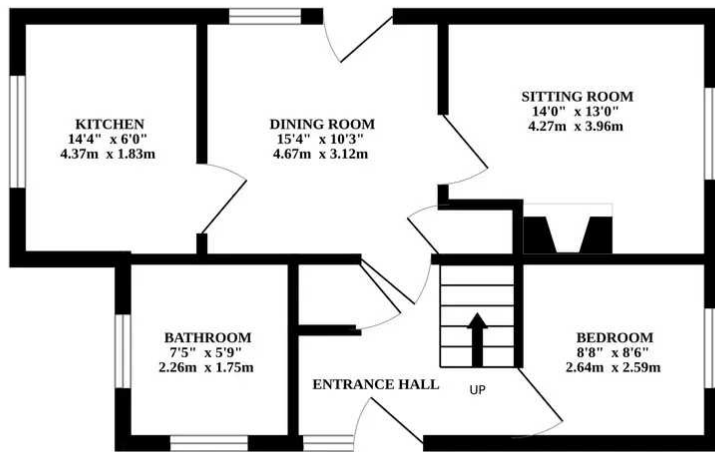
Upon entering, you are welcomed into a generous hallway that sets the tone for the rest of the property. You will find a well-proportioned living room that offers ample space for your furniture arrangements, complete with plush carpeting underfoot, providing both comfort and style. The wooden-themed kitchen, located at the rear of the property, is a delightful space that will inspire your cooking ideas. Featuring a large window, it allows for an abundance of natural light to flood in. A dedicated dining area provides an ideal setting for hosting guests and creating lasting memories with loved ones. Conveniently situated on the ground floor, you will discover a modern bathroom, tastefully designed to meet your daily needs, along with a third bedroom, which can effortlessly adapt to your evolving requirements.

Ascending to the upper floor, two further bedrooms await, each offering ample space to accommodate various furniture configurations, allowing you to personalise these spaces to suit your individual preferences.

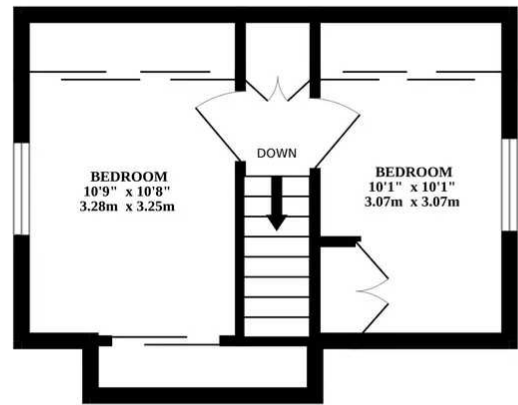
Finally, stepping outside, you are greeted by a great-sized garden, featuring a combination of lawn and a patio area. This outdoor sanctuary presents an ideal canvas for green thumbs to create an oasis, while also serving as a perfect space for leisurely outdoor activities and relaxation. For those with multiple vehicles, the property boasts a sizeable driveway capable of accommodating several cars. Furthermore, a single garage offers secure storage and additional parking options, ensuring your convenience is well



GROUND FLOOR



1ST FLOOR



Whilst every attempt has been made to ensure the accuracy of the floorplan contained here, measurements of doors, windows, rooms and any other items are approximate and no responsibility is taken for any error, omission or mis-statement. This plan is for illustrative purposes only and should be used as such by any prospective purchaser. The services, systems and appliances shown have not been tested and no guarantee as to their operability or efficiency can be given.
Made with Metropix ©2024

You can include any text here. The text can be modified upon generating your brochure.

You can include any text here. The text can be modified upon generating your brochure.

