



55 Napier Street, Mountain Ash, CF45 3HW

£85,000 Freehold

Mid-Terrace Property • Spacious Living Room • Wet Room • Two Double Bedrooms • Rear Garden • Superb Views



26 Whitcombe Street, Aberdare, Rhondda Cynon Taff, CF44 7AU
Tel: 01685 886086 Email: aberdare@bidmeadcook.co.uk
www.bidmeadcook.co.uk

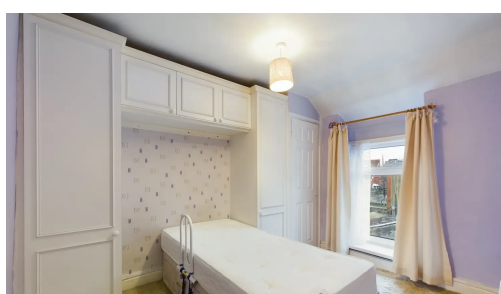
A two double bedroom, mid-terrace property having superb views over Mountain Ash and the valley below. The accommodation comprises an entrance hall, spacious, bay-fronted living room having a feature fireplace and wrought iron banister to the first floor. Kitchen/dining room having a range of wall and base units, built-in oven and hob and a ground floor wet-room having a vanity unit. To the first floor is a landing with access to the loft space and two double bedrooms. The rear garden is tiered and there is gated access to the lane beyond. Benefits include a gas central heating system, double glazing and the property is approximately ½ a mile to Mountain Ash town centre having a range of amenities to include hairdressers and cafes.

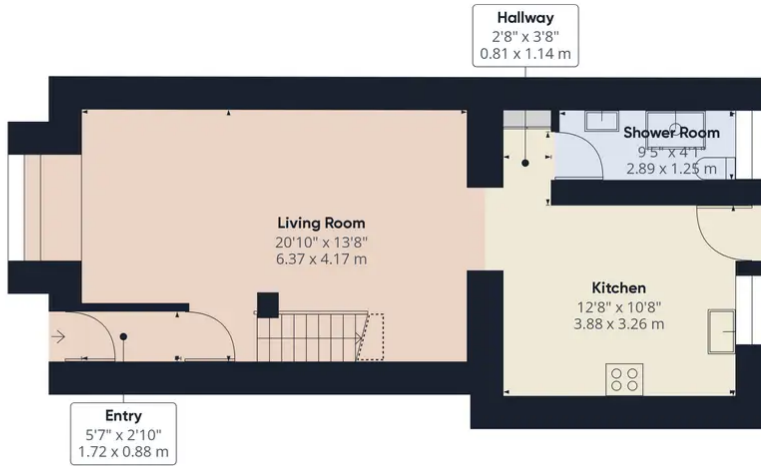


Council Tax band: A

Tenure: Freehold

Energy Efficiency Rating: D





Ground Floor



Floor 1



Approximate total area[¶]

760.91 ft²
70.69 m²

Reduced headroom

12.87 ft²
1.2 m²

Excluding balconies and terraces

⌄ Reduced headroom
(below 1.5m/4.92ft)

While every attempt has been made to ensure accuracy, all measurements are approximate, not to scale. This floor plan is for illustrative purposes only.

GIRAFFE360



No statement in these details is to be relied upon as representation of fact, and purchasers should satisfy themselves by inspection or otherwise as to the accuracy of the statements contain within. These details do not constitute any part of any offer or contract. Bidmead Cook and their employees and agents do not have any authority to give warranty or representation whatsoever in respect of this property. These details and all statements herein are provided without any responsibility on the part of Bidmead Cook or the vendors. Equipment: Bidmead Cook has not tested the equipment or central heating system mentioned in these particulars and the purchaser are advised to satisfy themselves as to the working order and condition. Measurements: Great care is taken when measuring, but measurements should not be relied upon for ordering carpets, equipment etc. The Laws of copyright protect this material. Bidmead Cook is the owner of the copyright. This property sheet forms part of our database and is protected by the database right and copyright laws. No unauthorised copying or distribution without permission.

Bidmead Cook is a trading name of trading name of BC Acquisition Ltd. Registered in England No.14967217