

Trenant Road

Salford



£275,000

Trenant Road

Salford, Salford

Well-Presented, Three Bedroom Semi Detached Family Home, Located in the Popular Irlam o' th' Height Area

Council Tax band: C

- Well-Presented, Three Bedroom Semi-Detached Family Home
- Located in the Popular Irlam o' th' Height Location
- Spacious, Bay-Fronted Lounge
- Bright, Airy Kitchen and Dining Rooms
- Three Generous Bedrooms
- Modern, Three-Piece Family Bathroom
- Low-Maintenance Garden to the Front with the Potential for Off-Road Parking
- Beautifully Presented, Paved Garden to the Rear that Benefits from the Sun
- Great Family Location, Close to Good Local Schooling and Well-Kept Parks, including Buile Hill Park
- Close to Excellent Transport Links into Salford Quays, Media City and Manchester City Centre. Viewing is Highly Recommended!



HILLS

Porch

uPVC door and double glazed windows surrounding

Entrance Hallway

A spacious and welcoming entrance hallway complete with a ceiling light point and laminate floors.

Lounge

12' 4" x 12' 1" (3.76m x 3.68m)

A bright lounge complete with a ceiling light point, a double glazed bay window and laminate flooring.

Dining Room

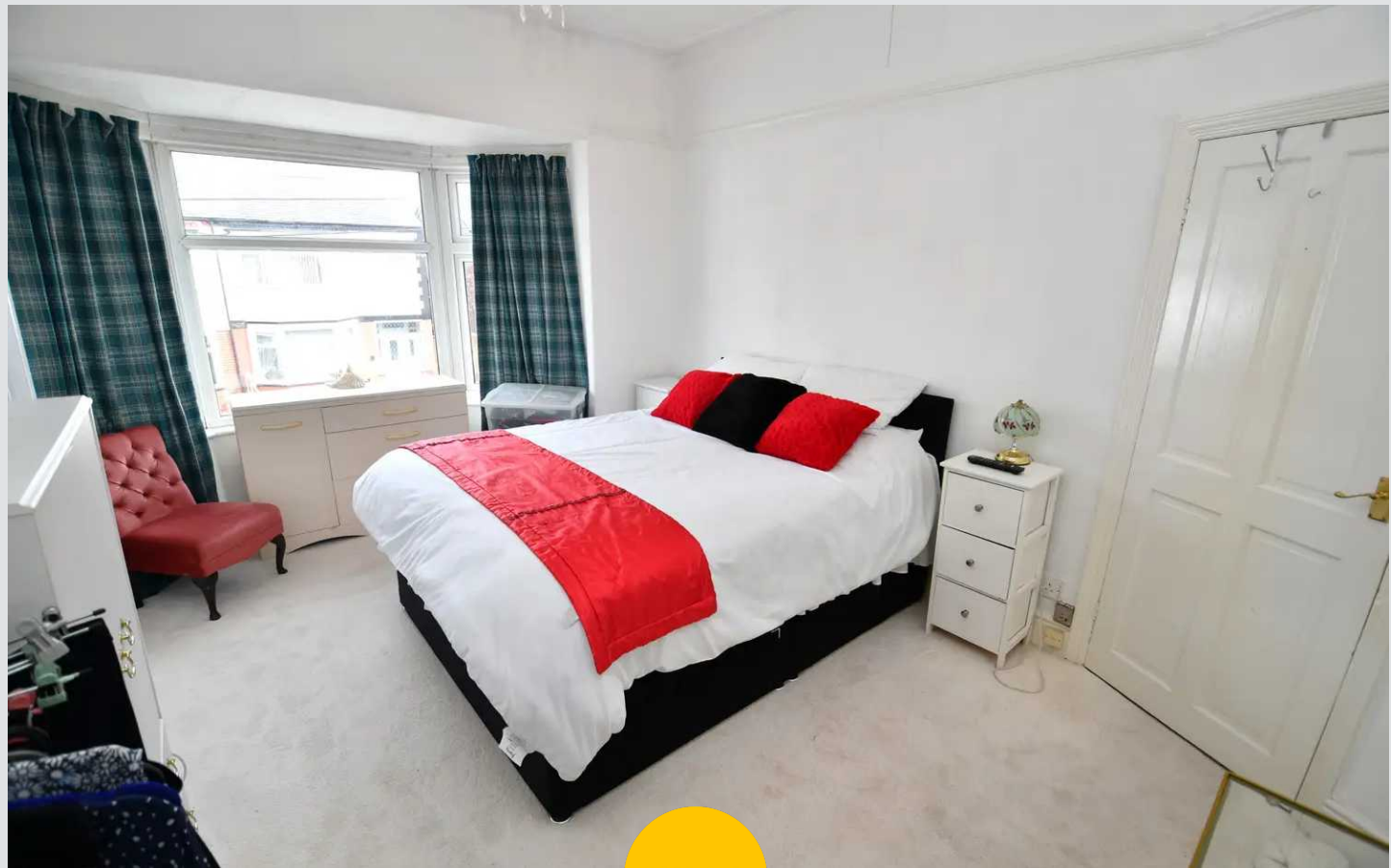
12' 1" x 12' 1" (3.69m x 3.68m)

A spacious dining room complete with ceiling light point and vinyl flooring

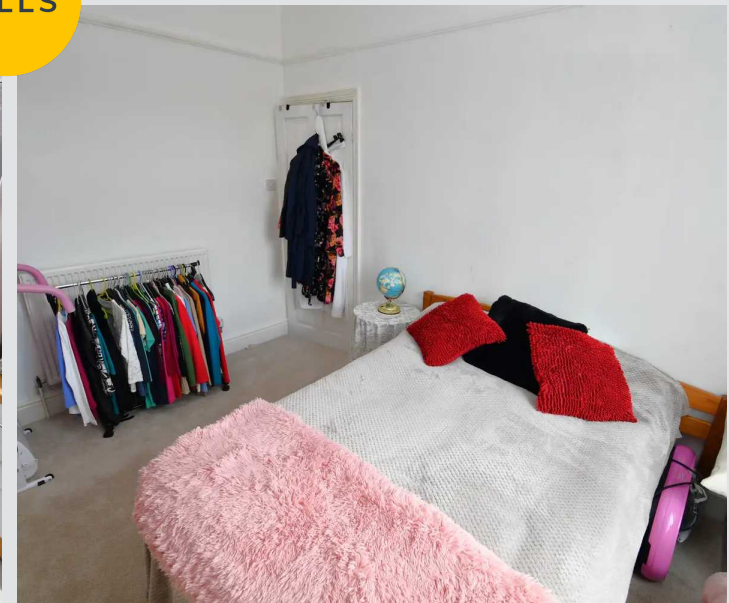
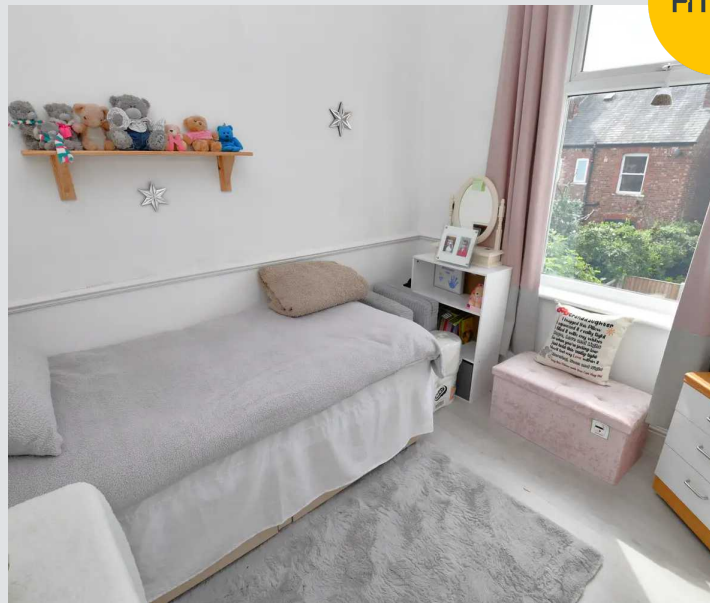
Kitchen

9' 2" x 6' 4" (2.79m x 1.94m)

Complete with a ceiling light point, double glazed window and complementary fitted units, with an in integrated sink and drainer unit, along with an integrated hob and oven. Space for a washer.



HILLS



Landing

Complete with a ceiling light point, double glazed window and carpet flooring.

Bedroom One

12' 4" x 12' 1" (3.75m x 3.69m)

A spacious first bedroom fitted with a ceiling light point, double glazed bay window and wall mounted radiator. Complete with carpet flooring.

Bedroom Two

12' 1" x 10' 3" (3.68m x 3.13m)

Fitted with a ceiling light point, double glazed window and wall mounted radiator. Complete with carpet flooring.

Bedroom Three

9' 3" x 8' 4" (2.81m x 2.55m)

Fitted with a ceiling light point, double glazed window and wall mounted radiator. Complete with laminate flooring.

Bathroom

7' 3" x 6' 2" (2.22m x 1.87m)

A bright bathroom fitted with a bath with shower over and basin. Complete with a ceiling light point and double glazed window.

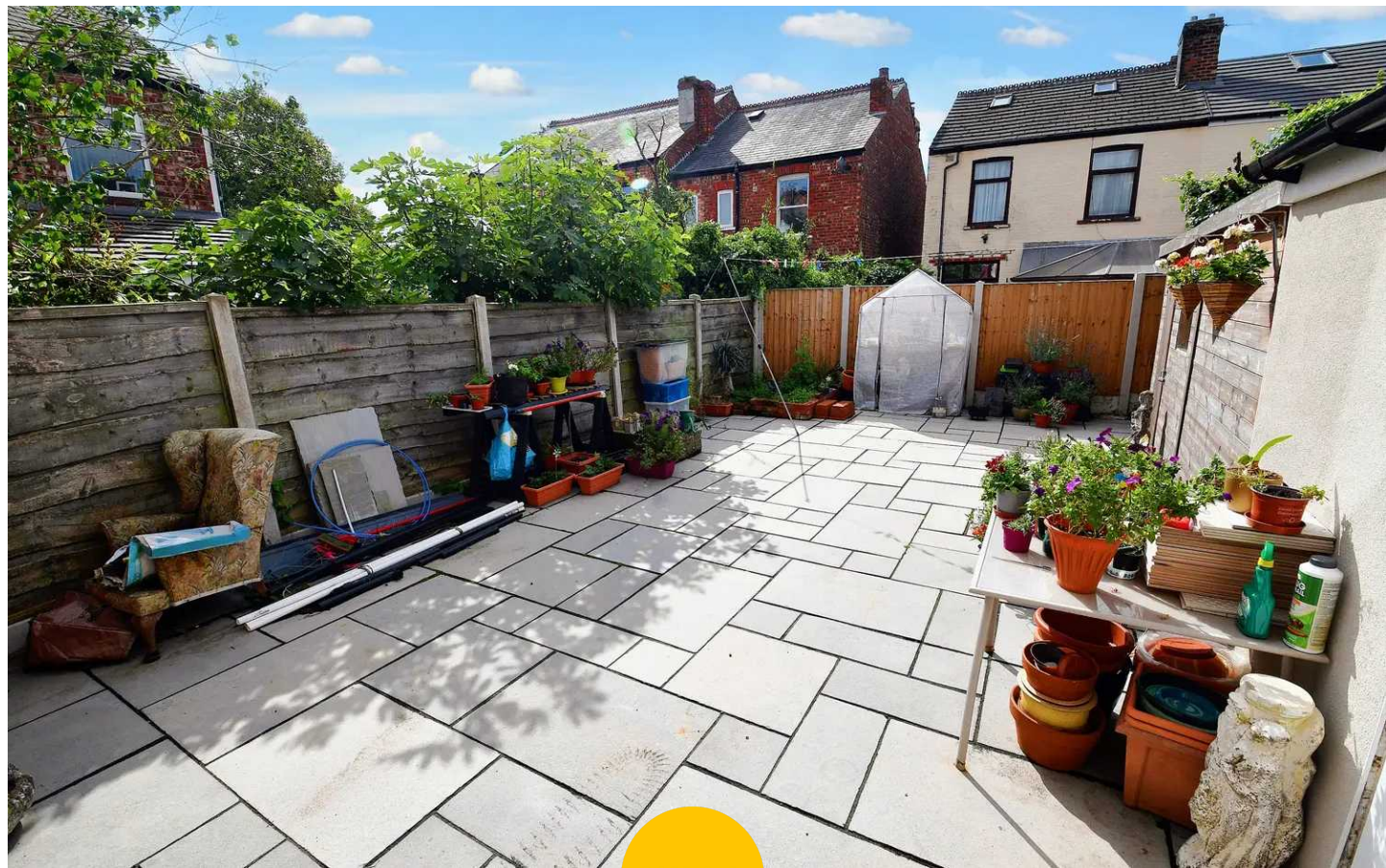
External

To the front of the property is potential for off road parking with a generous and low maintenance paved garden to the rear of the property.

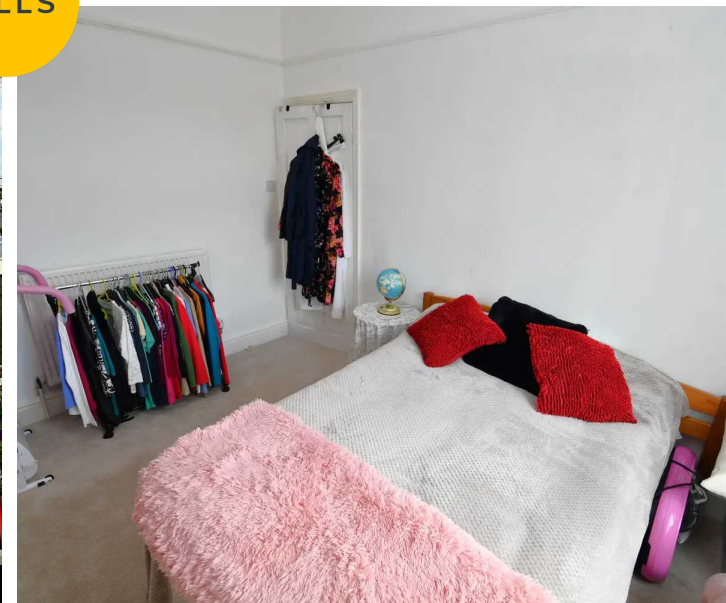
Outhouse

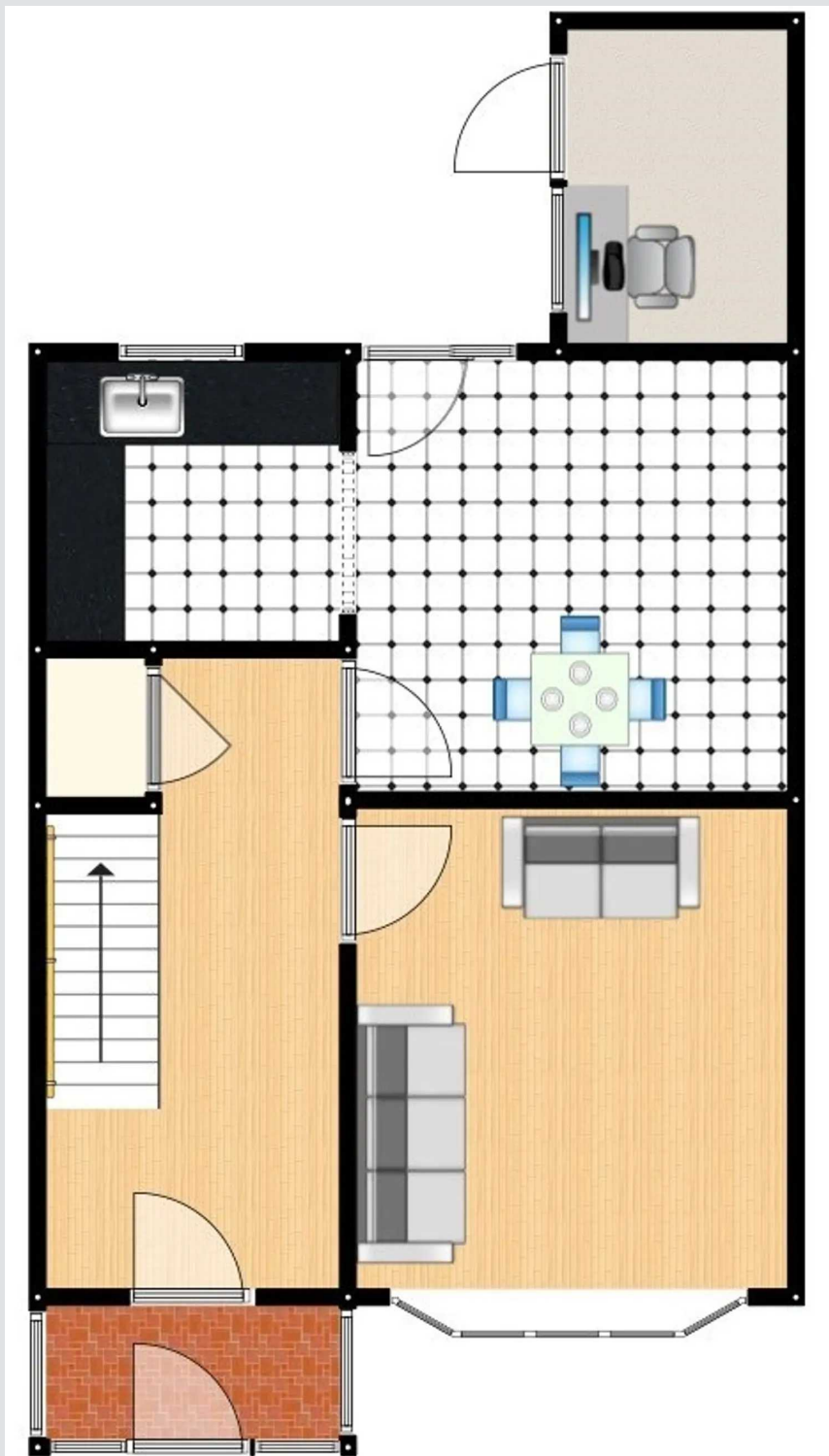
11' 1" x 6' 0" (3.39m x 1.83m)

A spacious outbuilding provides the perfect home office and comes complete with a ceiling light point, two double glazed windows and laminate flooring.



HILLS







HILLS

Hills | Salfords Estate Agent

Hills Residential, Sentinel House Albert Street - M30 0SS

0161 707 4900

sales@hills.agency

www.hills.agency/



THE PROPERTY MISDESCRIPTIONS ACT 1991 The Agent has not tested any apparatus, equipment, fixtures and fittings or services and so cannot verify that they are in working order or fit for the purpose. A Buyer is advised to obtain verification from their Solicitor or Surveyor. References to the Tenure of a Property are based on information supplied by the Seller. The Agent has not had sight of the title documents. A Buyer is advised to obtain verification from their Solicitor. You are advised to check the availability of this property before travelling any distance to view. Every effort and precaution has been made to ensure these particulars are correct and not misleading but their accuracy is not guaranteed nor do they form part of any contract. If there is any point which is of particular importance to you, please contact us and we will provide any information you require. This is advisable, particularly if you intend to travel some distance to view the property. The mention of any appliances and services within these details does not imply that they are in full and efficient working order. These particulars are in draft form awaiting Vendors confirmation of their accuracy. These details must therefore be taken as a guide only.