

Sanders & Sanders

ESTATE AGENTS

WESTBOURNE HONEYBOURNE EVESHAM



An extremely well presented, much improved, extended and thoughtfully refurbished, four bedroom detached family home, benefiting from upvc double glazed windows and gas fired central heating. The property comprises; Open-plan lounge/kitchen diner with bifold doors opening onto the rear garden. Snug, utility room, pantry cupboard and downstairs cloakroom. Master bedroom with ensuite and fitted wardrobes, three further double bedrooms and family bathroom. Landscape rear garden with decked area, shed and gated side access.

£415,000

Burton House, High Street, Alcester, Warwickshire, B49 5AB.
Tel: 01789 766771 E-mail: alcester@sanders-sanders.co.uk

Web: www.sanders-sanders.co.uk

Westbourne, Honeybourne, Evesham, WR11 7PT

Open-Plan Living room/Dining Area and Kitchen Area

Dining Area
18'10 x 6'7 (5.75 x 2.00m)

Living Room Area
23'0 x 11'6 (7.00 x 3.50m)



Snug
10'8 x 10'7 (3.26 x 3.22m)



En-Suite Shower Room



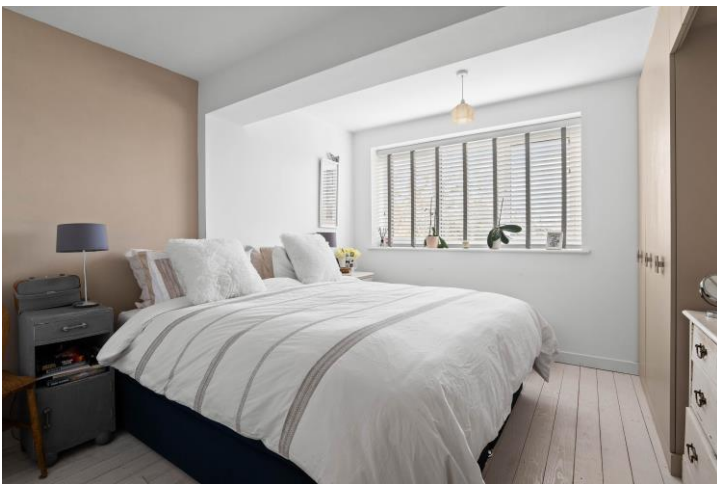
Cloakroom



Bedroom Two
12'6 x 9'6 (3.80 x 2.90m)



Bedroom One with en-Suite Shower Room
11'4 x 10'8 (3.45 x 3.25m)



Bedroom Three
10'10 x 8'2 (3.30 x 2.50m)



Bedroom Four
12'2 x 7'7 (3.70 x 2.30m)

Bathroom

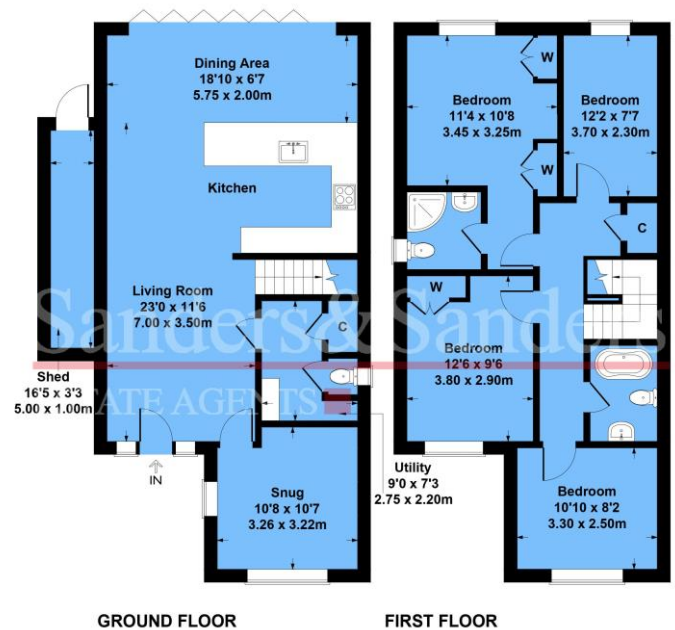


Rear Garden



Floor Plans & Property Details Disclaimer

These floor plans are for identification purposes only in relation to where one room is situated to another. They are not to be relied upon in any way for dimensions, scaling or sq. ft/metres. We will not be held responsible for any loss incurred, due to reliance on these measurements from the floor plans or measurements from the property details. You are advised to confirm all measurements.



Approximate Gross Internal Area = 1432 sq m / 133 sq ft
Illustration for identification purposes only, measurements are approximate, not to scale.

Fixtures & Fittings

Please note that the fixtures & fittings shown on the photographs, contained within these property details, do not form part of a fixtures & fittings list. Some items may/may not be included. You are advised to clarify what items are included before entering into any negotiations.