



Flat 4, 1 The Conge, Great Yarmouth

£69,000 Leasehold

Minors and Brady proudly presents this first floor studio flat, located in Great Yarmouth. Its convenient central location ensures its in close proximity to all local amenities and natural surroundings. Its versatile accommodation consists of a open plan living room/bedroom, kitchen and bathroom.

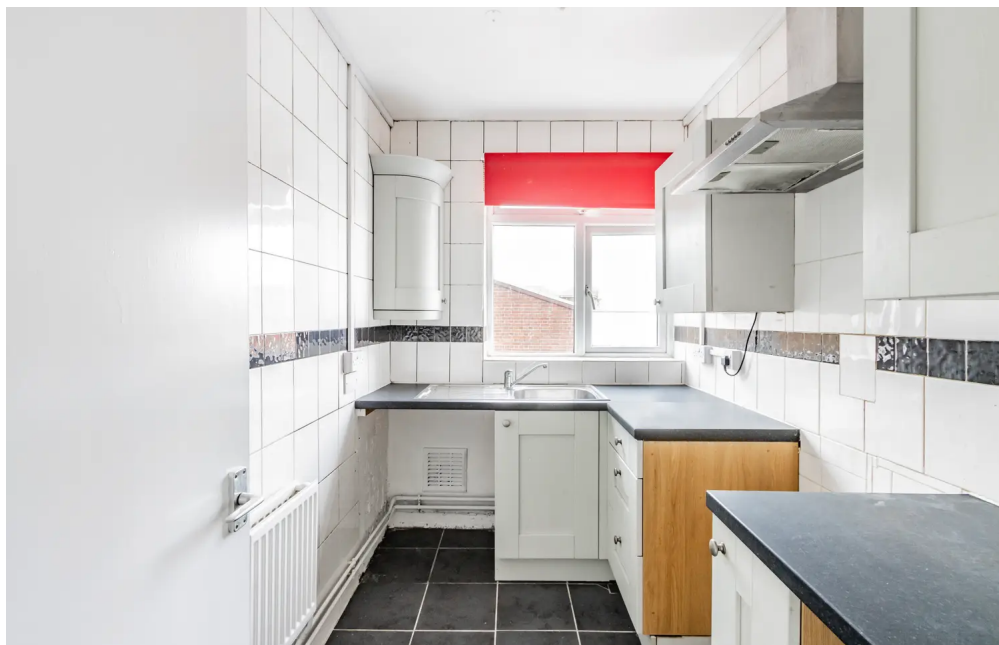
Council Tax band: A

Tenure: Leasehold

Minors and Brady proudly presents this first floor studio flat, located in Great Yarmouth. Its convenient central location ensures its in close proximity to all local amenities and natural surroundings. Its versatile accommodation consists of a open plan living room/bedroom, kitchen and bathroom.

LOCATION

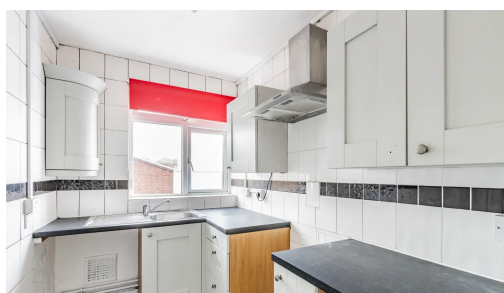
This property is located in the popular town of Great Yarmouth, the UK's third most desired seaside destination, also adjoining the highly sought-after Norfolk Broads. The town benefits from a wide range of local amenities and great leisure facilities including schooling, supermarkets, shopping centres, pubs, restaurants, bars, cinemas, swimming pools and theme parks. The town has its train and stations with fantastic transport links into the Cathedral City of Norwich (approx. 30 min drive). The area has been enhanced in recent years by a steady programme of road improvements which have provided a vastly improved road link to London, the industrial centres of the Midlands and the North. A new deep-water outer harbour is now in operation.



Minors and Brady proudly presents this first floor studio flat, located in Great Yarmouth. Its convenient central location ensures its in close proximity to all local amenities and natural surroundings. Its versatile accommodation consists of a open plan living room/bedroom, kitchen and bathroom.

LOCATION

This property is located in the popular town of Great Yarmouth, the UK's third most desired seaside destination, also adjoining the highly sought-after Norfolk Broads. The town benefits from a wide range of local amenities



Minors and Brady proudly presents this first floor studio flat, located in Great Yarmouth. Its convenient central location ensures its in close proximity to all local amenities and natural surroundings. Its versatile accommodation consists of an open plan living room/bedroom, kitchen and bathroom.

LOCATION

This property is located in the popular town of Great Yarmouth, the UK's third most desired seaside destination, also adjoining the highly sought-after Norfolk Broads. The town benefits from a wide range of local amenities and great leisure facilities including schooling, supermarkets, shopping centres, pubs, restaurants, bars, cinemas, swimming pools and theme parks. The town has its train and stations with fantastic transport links into the Cathedral City of Norwich (approx. 30 min drive). The area has been enhanced in recent years by a steady programme of road improvements which have provided a vastly improved road link to London, the industrial centres of the Midlands and the North. A new deep-water outer harbour is now in operation.

THE CONGE

Introducing this first floor studio flat, providing an enticing opportunity for those seeking a conveniently located apartment within a convenient position. Situated in a central location, this chain-free, one-bedroom apartment presents a blank canvas for someone to make their own.

Upon entering, you are greeted by a welcoming open plan living area and bedroom, offering flexibility to design the space to suit individual preferences. The kitchen is fitted with units and under counter spaces for your appliances. The bathroom comprises of a three piece suite, accommodating all.

AGENTS NOTES

We understand that this property is leasehold, with 104 years remaining on the lease.

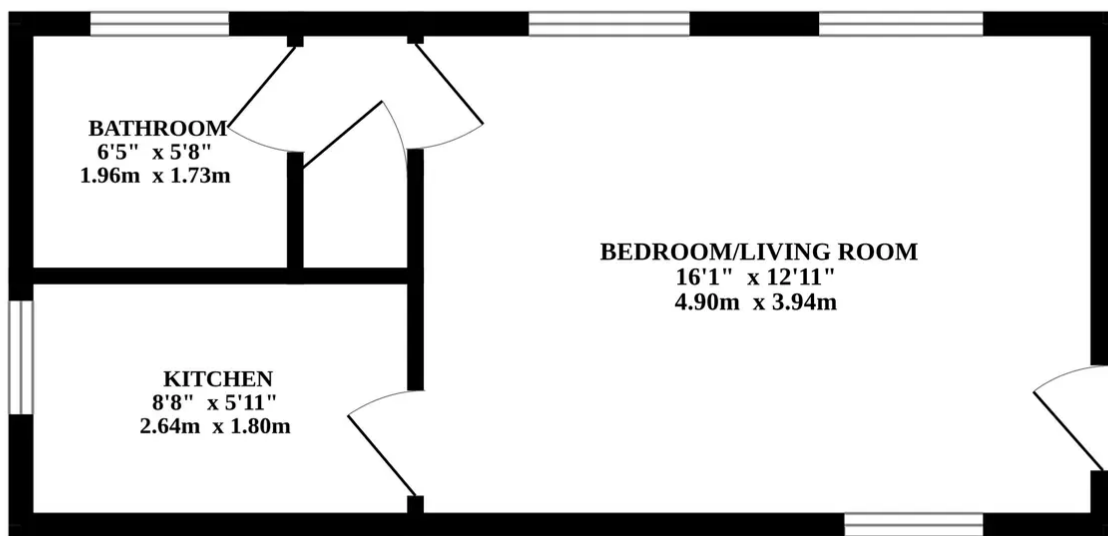
Connected to mains electricity, gas, water and drainage.

No payment for ground rent or maintenance.

Heating system - Gas Central Heating.

Council Tax Band: A





Whilst every attempt has been made to ensure the accuracy of the floorplan contained here, measurements of doors, windows, rooms and any other items are approximate and no responsibility is taken for any error, omission or mis-statement. This plan is for illustrative purposes only and should be used as such by any prospective purchaser. The services, systems and appliances shown have not been tested and no guarantee as to their operability or efficiency can be given.
Made with Metropix ©2024

You can include any text here. The text can be modified upon generating your brochure.

You can include any text here. The text can be modified upon generating your brochure.

