



A CHAIN FREE THREE BEDROOM, TWO BATHROOM FAMILY HOME

Franklins, Maple Cross, Hertfordshire, WD3 9SY

ROBSONS

A CHAIN FREE THREE BEDROOM, TWO BATHROOM FAMILY HOME

Franklins, Maple Cross, Hertfordshire, WD3 9SY

- RECEPTION ROOM & KITCHEN
- CONSERVATORY
- GUEST WC
- PRINCIPAL BEDROOM WITH ENSUITE
- TWO FURTHER BEDROOMS
- FAMILY BATHROOM
- REAR GARDEN
- TWO ALLOCATED PARKING SPACES
- NO ONWARD CHAIN

Description

Available to the market with no onward chain, is this modern and well-maintained three bedroom, two bathroom family home with a good sized rear garden and two allocated parking space.

The ground floor comprises an entrance hallway with a guest WC. There is a front-aspect lounge with a feature fireplace and a spacious kitchen featuring a range of modern units with integrated appliances. Following on from the kitchen is a large conservatory with views of the garden.





To the first floor there is a principal bedroom with the benefit of fitted wardrobes and an ensuite shower room. There are two further well appointed bedrooms, one with fitted wardrobes and a family bathroom.

Externally, this delightful home offers a good-sized rear garden that is mainly laid to lawn with a garden shed. The property also comes with the benefit of two allocated parking spaces.

Location

The property is situated in Maple Cross, close to the village of Harefield which is surrounded by some beautiful countryside along the Grand Union Canal. The local area also has good sporting facilities which include golf, cricket and football clubs. Rickmansworth caters for specialist and daily shopping requirements to include the food halls of Marks & Spencer, Waitrose and Tesco. At Denham is the Chiltern Line to Marylebone whilst at Rickmansworth there is the Chiltern Line and Metropolitan railways to London Marylebone and Baker Street. The M25 motorway is available at junction 17 connecting you to the national motorway network. The area is well served for good quality private and state schools for all ages.

Additional Information

Tenure: Freehold

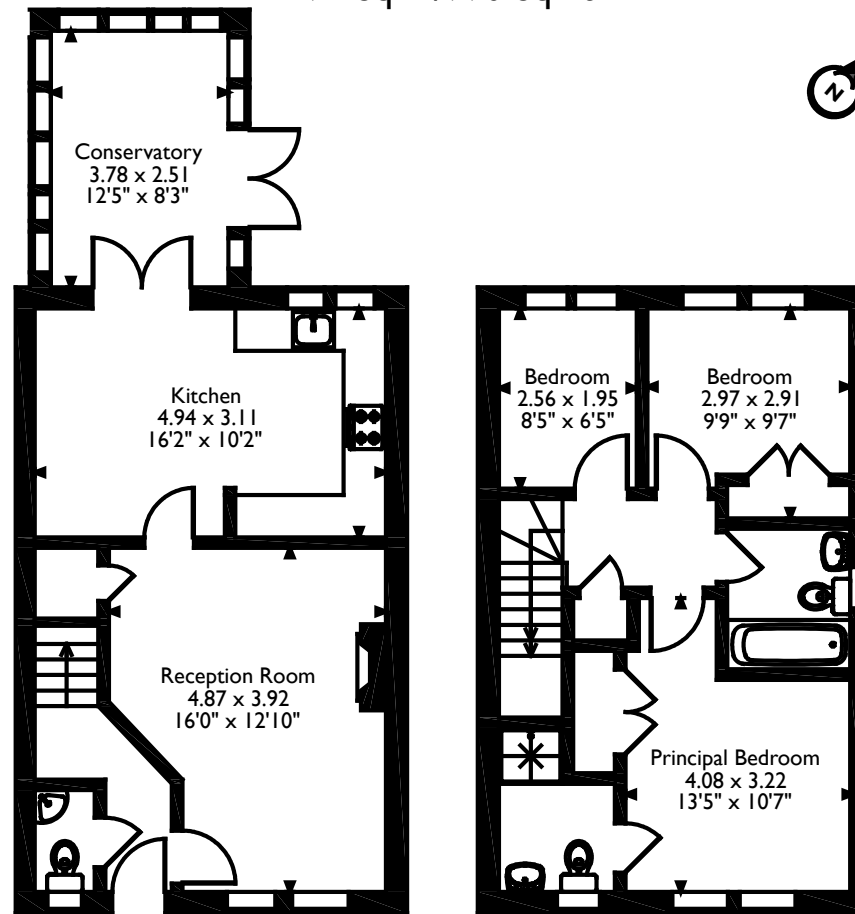
Local Authority: Three Rivers District Council

Council Tax: Band E

Energy Efficiency Rating: Band D



Franklins, Maple Cross, Rickmansworth, Hertfordshire
Approximate Gross Internal Area
92 Sq M/990 Sq Ft



Ground Floor

First Floor

Please note that the location of doors, windows and other items are approximate and this floorplan is to be used for illustrative purposes only. Unauthorized reproduction is prohibited.

ROBSONS

130 High Street, Rickmansworth, Hertfordshire, WD3 9SY
Tel: 01923 777762 Rickmansworth@robsonswb.com

www.robsonswb.com

www.
the
londonoffice.co.uk
40 ST JAMES'S PLACE SW1