



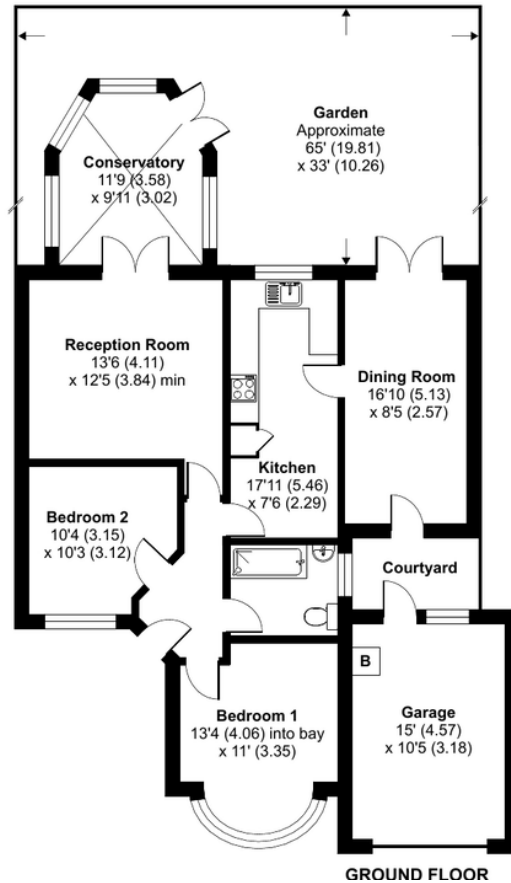
Longmead Drive

Sidcup
DA14 4NU

Freehold

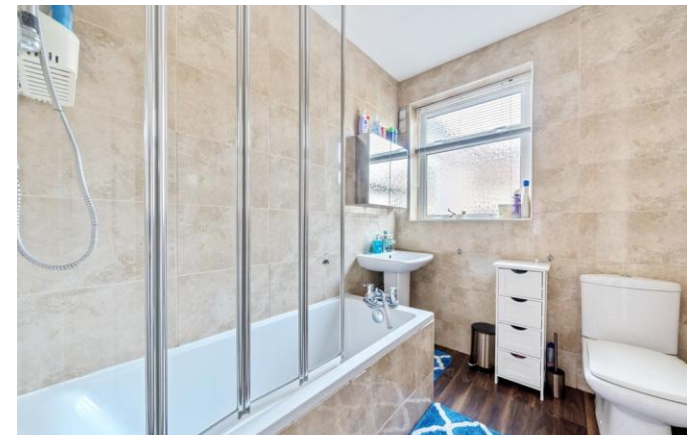
Spacious 2/3 bed semi detached bungalow
Gas central heating
Double glazing
Off street parking for several cars & garage
Chain Free
Living room with doors to conservatory
Kitchen/breakfast room

Local Authority Bexley London Borough
Council
Council Tax Band E
EPC Rating D



Longmead Drive, Sidcup, DA14

Approximate Area = 929 sq ft / 86.3 sq m
Garage = 160 sq ft / 14.8 sq m
Total = 1089 sq ft / 101.1 sq m
For identification only - Not to scale



Drewery Property Consultants
128 Station Road
Sidcup
Kent
DA15 7AF

Contact
020 8269 6605
info@drewery.co.uk
www.drewery.co.uk

Agents Note: Whilst every care has been taken to prepare these particulars, they are for guidance purposes only. All measurements are approximate and are for general guidance purposes only and whilst every care has been taken to ensure their accuracy, they should not be relied upon and potential buyers/tenants are advised to recheck the measurements.