



## 19 Stockholm Way, Dereham

Guide Price £160,000



# 19 Stockholm Way

Dereham, Dereham

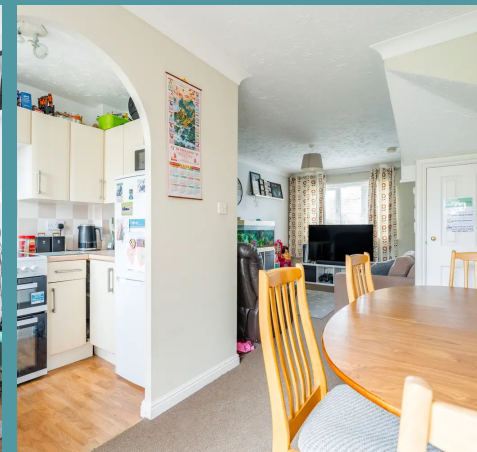
Guide Price: £160,000 - £170,000. Step into modern living with this delightful home boasting an open-plan living space, seamlessly blending the living, dining and kitchen areas for versatile entertaining. The well-appointed kitchen offers ample cupboard space and workspace, while French doors open to the rear garden, creating an indoor-outdoor flow. Upstairs, two double bedrooms provide comfort and storage, complemented by a modern bathroom and the garden plot, with a well-maintained lawn and patio, offers outdoor space for relaxation. The en-bloc single garage adds convenience with secure off-street parking and storage.

Council Tax band: B

Tenure: Freehold

EPC Energy Efficiency Rating: D

EPC Environmental Impact Rating: D







## 19 Stockholm Way

Dereham, Dereham

Step into modern living with this delightful home boasting an open-plan living space, seamlessly blending the living, dining and kitchen areas for versatile entertaining. The well-appointed kitchen offers ample cupboard space and workspace, while French doors open to the rear garden, creating an indoor-outdoor flow. Upstairs, two double bedrooms provide comfort and storage, complemented by a modern bathroom and the garden plot, with a well-maintained lawn and patio, offers outdoor space for relaxation. The en-bloc single garage adds convenience with secure off-street parking and storage.

### LOCATION

Conveniently situated in Dereham, this property enjoys a fantastic location within a short distance to the town centre. With supermarkets and a pub nearby, you'll find all your essential amenities within easy reach. The town centre itself offers an array of shops, pharmacies, a doctor's surgery, dentists, a cinema, a bowling alley and a leisure centre. Indulge in the local dining scene with an abundance of pubs and restaurants to choose from. Families will appreciate the proximity to schools catering to all age groups. Enjoy easy access to the A47 for seamless commuting, while relishing the advantage of being on the outskirts of town, offering a peaceful ambiance with amenities right at your doorstep.

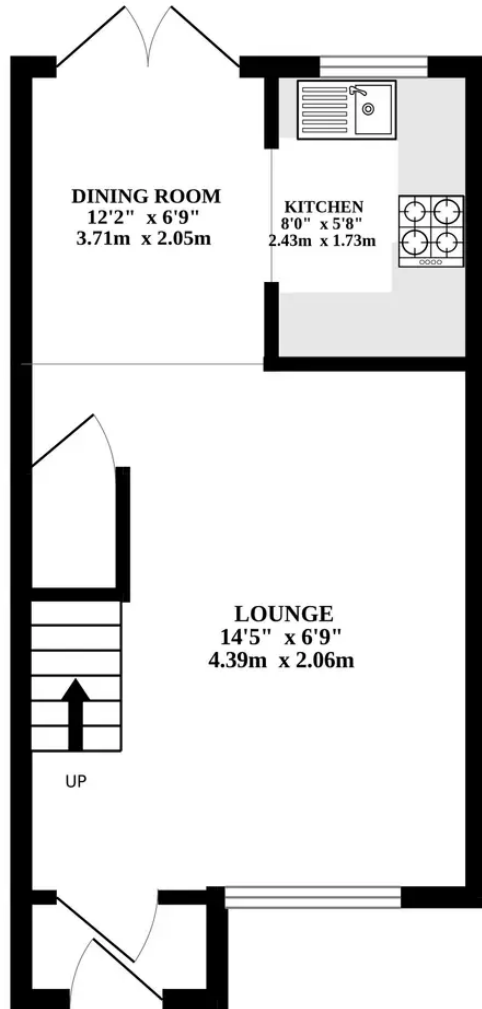
### THE PROPERTY

Upon entering, you are greeted by a hallway, leading to the heart of the home – an open plan





GROUND FLOOR



1ST FLOOR

