



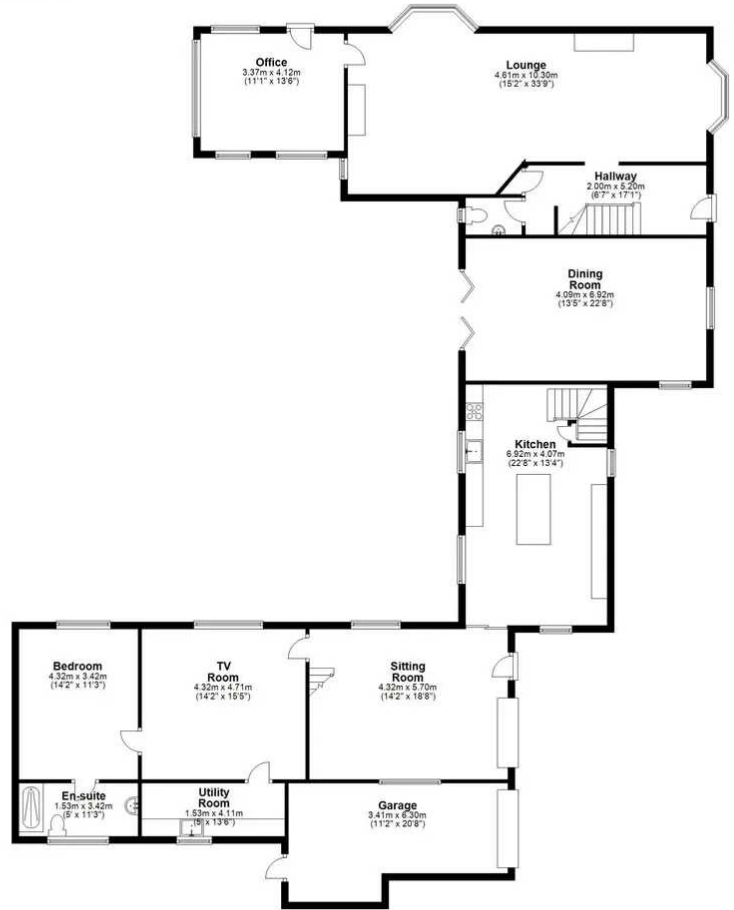
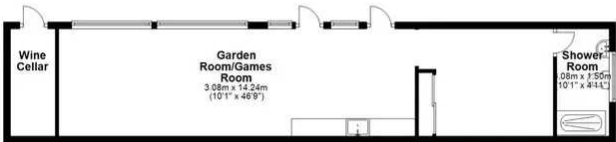
## 27 High Street, Stock

£2,500,000 Freehold

Stunningly well presented period home with beautiful South Facing Landscaped walled garden • Unique period home of immense character which has been lovingly and sympathetically restored by the current owners • Stunning landscaped South facing walled garden of around 3/4 of an acre (STLS) • Offered in exceptionally good order throughout • Fully fitted kitchen in traditional hand painted style with a number of integrated appliances. • Delightful dual aspect lounge with large window, with seats, overlooking garden and most attractive inglenook fireplace inset with log burner. • Self contained guest annexe accommodation • Potential work/life accomodation with flexibility for lots of options • Rare opportunity



**Ground Floor**  
Approx. 273.3 sq metres (2942.0 sq. feet)



Total area: approx. 428.8 sq. metres (4615.8 sq. feet)

Produced by PTEPIC Limited. Disclaimer: All floorplans are provided for informational and illustrative purposes only. Although we endeavour to provide truthful representation, we do not in any way warrant the accuracy of the floorplan information and the floorplan layout and measurements may contain errors and omissions. We are not liable for and do not accept any liability relating to any loss or damage suffered as a direct or indirect result of use of any information. You or your advisors should conduct a careful, independent investigation of the property to determine to your satisfaction as to the suitability of the property for your full requirements. Plans produced using PlanUp.

You can include any text here. The text can be modified upon generating your brochure.

Contact Chalmers Agency on:

Tel: 01277 840917

Mobile: 07946 377970

Email: [mandy@chalmers-agency.co.uk](mailto:mandy@chalmers-agency.co.uk)

Doing things differently for our clients

Small Independent Estate Agent in Essex

Based in Stock

We put ourselves in your shoes