

Head Office:
Dixon Kelley Estate Agents
1 Penn Court
Station Road, West Moors
Dorset. BH22 0JJ

HAMPSHIRE PARK HOMES

DRAFT

www.hampshireparkhomes.com

Telephone: 01202 877511

19 Whitehaven Park, Chapel Lane, Langley, Southampton. SO45 1YZ



Quality New Home—Ready for Early Occupation!



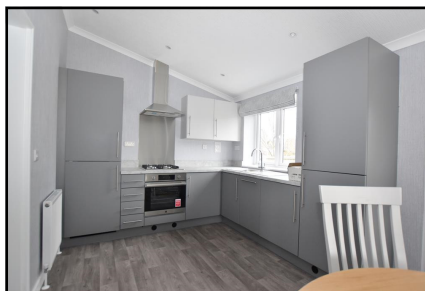
This drawing has been prepared for diagrammatic purpose only. Not to scale.

1 Bedroom Park Home approx 24' x 20'

Accommodation & approximate room dimensions:

- Omar Bespoke 'Image' Park Home
- 'Open-Plan' Living Space: approx 23'6" x 19' max overall. Superb kitchen with range of floor cupboards. Built-in oven, hob & cooker hood. Integrated fridge/freezer, washing machine & dishwasher. Cupboard housing combination gas boiler. Lounge area with vaulted ceiling & wall mounted fireplace. Ample space for dining suite.
- Double Bedroom: approx 9'2" x 8'3". Fitted wardrobe.
- Shower Room: Walk-in shower. Vanity wash basin & WC. Chrome heated towel rail.
- Gas Central Heating (system untested)
- PVCu Double-Glazing
- Stylish Interior Design & Fully Furnished
- 10 year Gold Shield Warranty
- Parking close to home
- Patio Garden
- Age Restriction 50+ No Pets Allowed
- Popular Residential Park near to local shop & services and on the edge of the renowned New Forest National Park.

Popular Residential Park



Price £174,950

Pitch Fee: approx £47.10 per weeks

Subject to Annual Review

Council Tax Band: 'A' Tenure: 1983 Mobile Homes Act Agreement

VIEWING STRICTLY BY APPOINTMENT WITH THE VENDOR'S AGENT Hampshire Park Homes 01202 877511

IMPORTANT NOTE: These particulars are believed to be correct but their accuracy is not guaranteed. They do not form part of any contract. Nothing in these particulars shall be deemed to be a statement that the property is in good structural condition or otherwise, nor that any of the services, appliances, equipment or facilities are in good working order or have been tested. Purchasers should satisfy themselves on such matters prior to purchase Ref.W04704

The recommended specialist in Park Home sales
Partner: Simon Dixon

