



# MODERN 1ST FLOOR 2 BEDROOM APARTMENT

27 Cromwell Place, Station Road, Redhill, Surrey, RH1 1EX

Step into modern elegance at Romanby Court!  
This 1st-floor, 2-bed apartment in central Redhill has been tastefully refurbished with new carpets, fresh decor, an updated bathroom and a refreshed kitchen with appliances.  
Enjoy the convenience of allocated parking.  
Your dream home in the heart of Redhill awaits!  
Chain free.  
93 year lease  
Ground rent £160 p/a, Maintenance £1,925.84 p/a. EPC: C

## £295,000

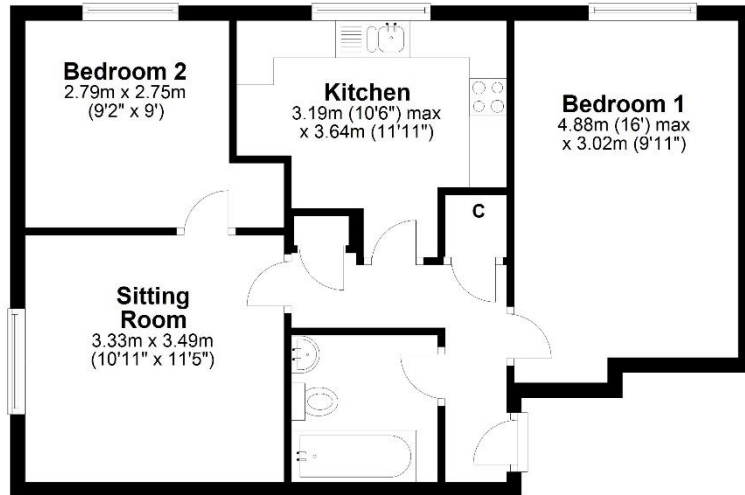


lewis  
white



### First Floor

Approx. 54.8 sq. metres (590.2 sq. feet)



Total area: approx. 54.8 sq. metres (590.2 sq. feet)

Produced by Lewis White, not to scale and indicative only  
Plan produced using PlanUp.



Ideal buy to let investment or just a cosy home.

Council tax band: C EPC: C