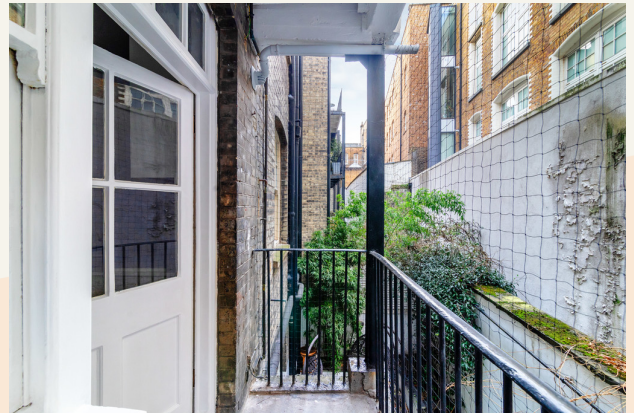


tavistockbow

For Rent



People Make Places



Broad Court, Covent Garden WC2

2 bedrooms | 752 sq ft





Charming two bedroom, one bathroom flat for rent on Broad Court, Covent Garden. This well appointed residence offers close proximity to the Royal Opera House, combining comfort and convenience on a pedestrian walk way between Bow Street and Drury Lane, in the heart of vibrant London.

What you need to know

- Two double bedroom
- One large bathroom
- Good size living room
- Large eat-in kitchen
- Private balcony
- Furnished
- Available immediately
- Popular pedestrianised walkway
- Close to Covent Garden tube station
- Neighbour of the stunning NoMad hotel & restaurant





Overview

Broad Court is home to the famous "ballerina" statue and located just off Bow Street where The Royal Opera House can be found. The flat has its own private balcony but also looks on to the private gardens of Crown Court, creating a verdant oasis nestled in amongst the bustling Covent Garden streets.

The landlord offers a 12 month contract with mutual break as agreed (subject to contract). The flat is available immediately and on a furnished basis. Located with Westminster City Council, tax band: F.

There are many transport links available but Covent Garden and Holborn tube stations are the closest.





Broad Court, Covent Garden WC2

People Make Places

London is collection of inspiring urban villages and one of the most exciting places in the world to live, work & play.

We work with both property owners and their occupiers, sharing the story of these vibrant neighbourhoods, conveying the unique soul & energy to future custodians, the people who'll keep them buzzing.

And unlike many real estate businesses we're not just about buildings, because streets & buildings don't make a neighbourhood.

We're about building relationships, because **people make places**.

MISINTERPRITATION ACT [COPYRIGHT] DISCLAIMER: Tavistock Bow Ltd for themselves and for the vendor(s) of this property whose agents thy are, given notice that: 1. These particulars do not constitute, not constitute any part of, an offer or contract. 2. None of the statements contained in these particulars as to the property are to be relied on as statements or representations of fact. 3. Any intending purchaser or lessee must satisfy themselves by inspection or otherwise as to the correctness of each of the statements contained in these particulars. 4. The vendor(s) or lessor(s) do not make or give and neither Tavistock Bow Ltd nor any person in their employment has any authority to make or give any representation or warranty whatever in relation to this property. Finance Act 1989, Unless otherwise stated all prices and rents are quote exclusive of VAT. Property Misrepresentation Act 1991; These details are believed to be correct at the time of compilation but may be subject to subsequent amendment.

Follow us:     @tavistockbow

Score	Energy rating	Current	Potential
92+	A		
81-91	B		
69-80	C		78 C
55-68	D	65 D	
39-54	E		
21-38	F		
1-20	G		

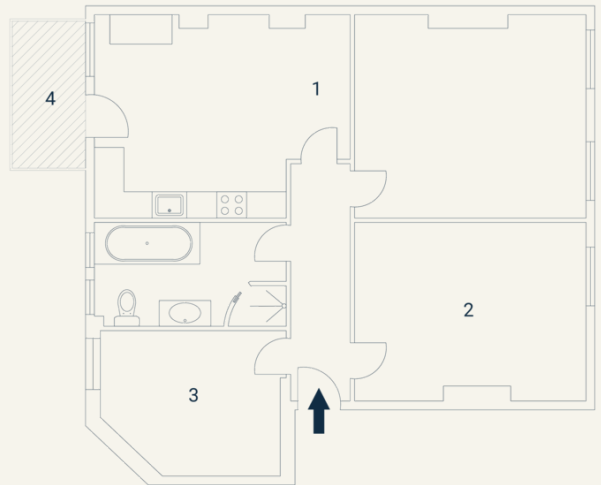
Broad Court, WC2

Approximate Gross Internal Area 70 sq m / 752 sq ft

Excluding External Balcony Of 4 sq m / 43 sq ft

Raised Ground Floor

1 Living /	2 Bedroom	3 Bedroom	4 Balcony
Kitchen /	4.24 x 3.09M	3.50 x 2.72M	2.66 x 1.32M
Dining	13'9" x 10'1"	11'4" x 8'9"	11'4" x 8'9"
9.20 x 3.82M			
30'1" x 12'5"			



Floorplan produced for Tavistock Bow. Illustration for identification purposes only and not to scale. All measurements are approximate and not to be relied upon.

tavistockbow

21 New Row, Covent Garden,
London, WC2N 4LE

t: 020 7477 2177
e: hello@tavistockbow.com
w: tavistockbow.com



Broad Court, Covent Garden WC2