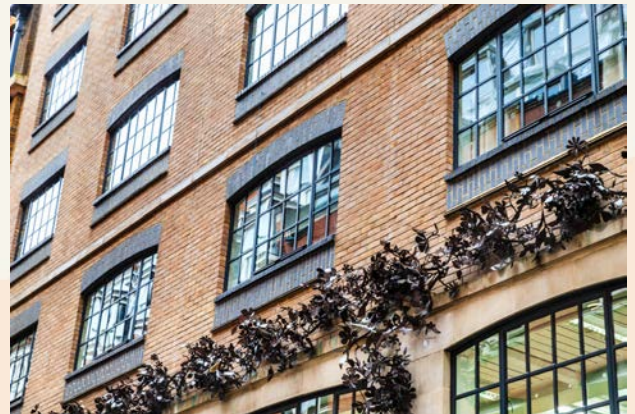


*tavistockbow*

**For Rent**



**People Make Places**



**Kean Street, Covent Garden WC2**

1 bedroom | 559 sq ft

£825 pw





A beautifully presented loft style apartment on the third floor of this sought after contemporary development on the fringes of Covent Garden, featuring a bright open plan living space, spacious bedroom, modern shower room and timber floors throughout. Available immediately on a furnished basis.

#### What you need to know

- Loft style apartment
- Large bedroom
- Third floor (with lift)
- Timber floors throughout
- Modern warehouse style development
- Fully furnished
- Quiet location
- Open plan kitchen
- Available early February
- Close to Covent Garden & Holborn tubes





### Overview

This contemporary apartment is located on the third floor (with lift) of this sought after residential scheme on Kean Street, an extremely quiet enclave only moments from Covent Garden's Piazza, as well as the green open space of nearby Lincoln's Inn Fields.

Featuring bright living spaces with modern finishes throughout, the open plan kitchen/reception room adjoins the sleeping area via sliding pocket doors, creating open and flexible accommodation furnished in a modern neutral style.

The apartment is available immediately on a fully furnished basis for a 12 month let. Westminster Council Tax band F.

Covent Garden residents have access to some of the capital's finest restaurants and retailers, not to mention world class cultural attractions in the form of the Royal Opera House and numerous theatres, museums and galleries.





Educational powerhouses The London School of Economics, King's College and University of London all have major campuses nearby, making the neighbourhood an ideal home for culture vultures and students alike.

Tiring of the Covent Garden lifestyle is pretty much impossible, there's just so much to do! But if you feel the need to spread your wings, Soho, Mayfair, the City of London and the South Bank are all within easy reach, not to mention numerous transport options including tube, crossrail, mainline rail and river boat, making the area one of the most well connected neighbourhoods in the capital.



**Kean Street, Covent Garden WC2**

# People Make Places

London is collection of inspiring urban villages and one of the most exciting places in the world to live, work & play.

We work with both property owners and their occupiers, sharing the story of these vibrant neighbourhoods, conveying the unique soul & energy to future custodians, the people who'll keep them buzzing.

And unlike many real estate businesses we're not just about buildings, because streets & buildings don't make a neighbourhood.

We're about building relationships, because **people make places**.

MISINTERPRITATION ACT [COPYRIGHT] DISCLAIMER: Tavistock Bow Ltd for themselves and for the vendor(s) of this property whose agents thy are, given notice that: 1. These particulars do not constitute, not constitute any part of, an offer or contract. 2. None of the statements contained in these particulars as to the property are to be relied on as statements or representations of fact. 3. Any intending purchaser or lessee must satisfy themselves by inspection or otherwise as to the correctness of each of the statements contained in these particulars. 4. The vendor(s) or lessor(s) do not make or give and neither Tavistock Bow Ltd nor any person in their employment has any authority to make or give any representation or warranty whatever in relation to this property. Finance Act 1989, Unless otherwise stated all prices and rents are quote exclusive of VAT. Property Misrepresentation Act 1991; These details are believed to be correct at the time of compilation but may be subject to subsequent amendment.

Follow us:     @tavistockbow

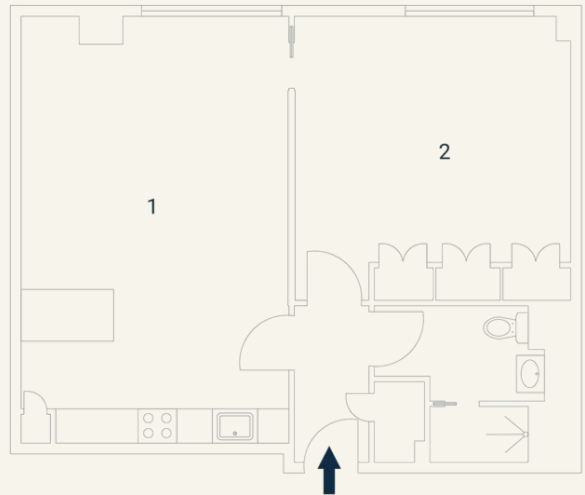
Score	Energy rating	Current	Potential
92+	A		
81-91	B		85   B
69-80	C	79   C	
55-68	D		
39-54	E		
21-38	F		
1-20	G		

Kean Street, WC2

Approximate Gross Internal Area 52 sq m / 559 sq ft

Third Floor

1 Living / 2 Kitchen  
Kitchen / 4.15 x 4.13M  
Dining 13'6" x 13'5"  
6.32 x 4.04M  
20'7" x 13'2"



Floorplan produced for Tavistock Bow. Illustration for identification purposes only and not to scale. All measurements are approximate and not to be relied upon.

**tavistockbow**

21 New Row, Covent Garden,  
London, WC2N 4LE

t: 020 7477 2177  
e: hello@tavistockbow.com  
w: tavistockbow.com



**Kean Street, Covent Garden WC2**