



HINTON
residential

SALES, LETTINGS & MANAGEMENT

Dorchester Way

Kenton, Brent HA3 9RF

- Three bedroom semi detached house
- Modern interior
- Potential for extension (STPP)
- Large rear garden

Asking Price Of £625,000

EPC Rating C



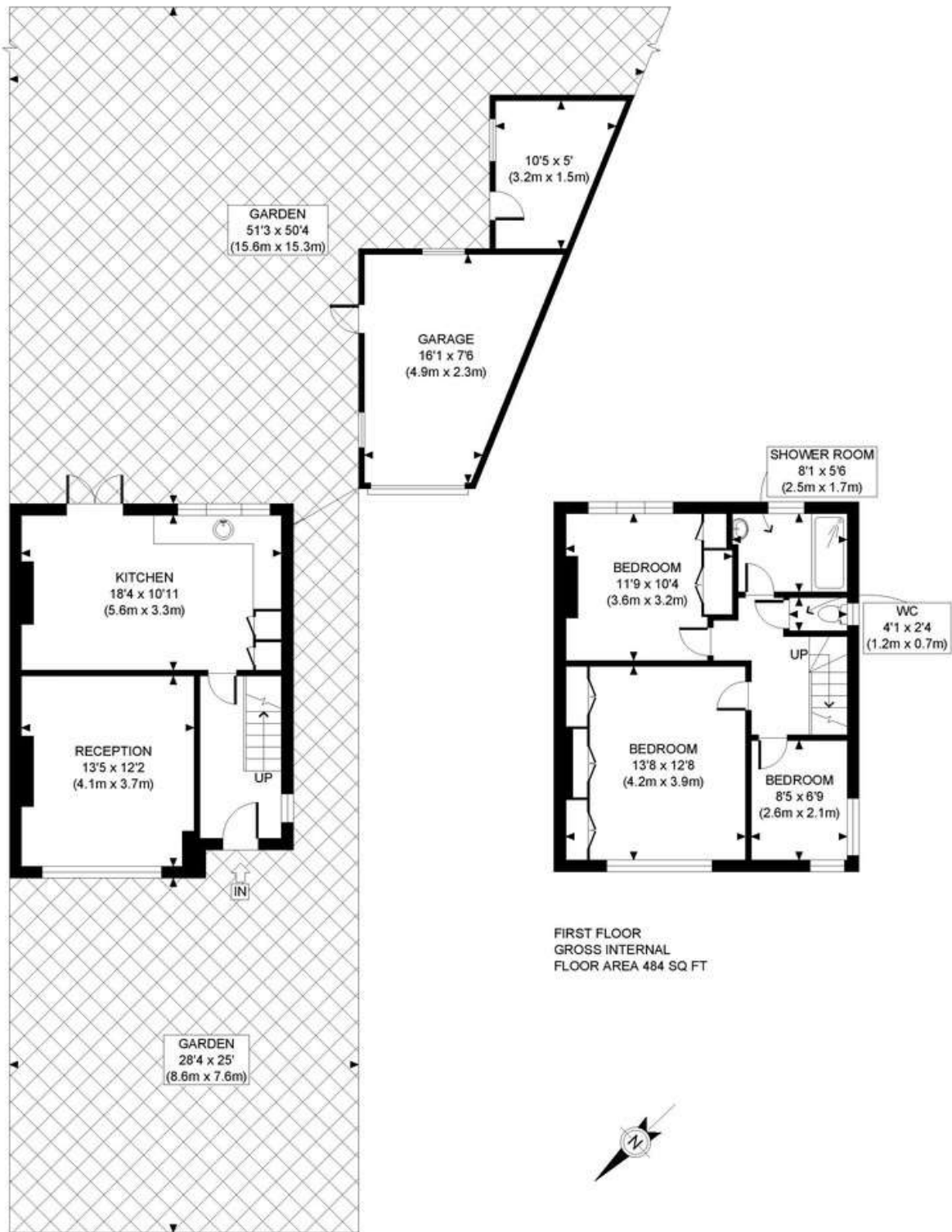


Property Description

A beautifully presented THREE BEDROOM SEMI DETACHED HOUSE WITH OFF STREET PARKING AND DETACHED GARAGE located within easy reach to Kingsbury Jubilee Line Station and less than a mile of Preston Road Metropolitan line station as well as local amenities and schools. The property is finished to a modern standard throughout and comprises a large bay fronted reception room featuring a gas fireplace, a large kitchen fitted with appliances and space to dine, upstairs there are two large double bedrooms and a third smaller double room with space for a wardrobe and a family bathroom with bath and overhead shower. The property has a large rear garden 50ftx50ft where there is the detached garage (in need of repair) and shed. There is plenty of potential for extension (STPP). Internal inspection highly recommended.







GROUND FLOOR
GROSS INTERNAL
FLOOR AREA 441 SQ FT

APPROX. GROSS INTERNAL FLOOR AREA WITH GARAGE/OUTHOUSE: 1175 SQ FT/ 109 SQM
 APPROX. GROSS INTERNAL FLOOR AREA WITHOUT GARAGE/OUTHOUSE: 925 SQ FT/ 86 SQM

PROPERTY PHOTO PLANS.CO.UK
 ONE STOP SHOP FOR PROPERTY MARKETING

This plan is for illustrative purposes only and should be used as such by any prospective client. Whilst every attempt has been made to ensure the accuracy of the Floor Plan contained here, measurements of the doors, windows, rooms and any other items are approximate and no responsibility is taken for any errors, omissions, or misstatement. The services, systems and appliances shown have not been tested and no guarantee as to the operability or efficiency can be given.

%epcGraph_c_1_378%

399 High Road
Harrow
Middlesex
HA3 6EL

www.hintonresidential.com
sales@hintonanddownes.com
0208 861 1066

Agents Note: Whilst every care has been taken to prepare these sales particulars, they are for guidance purposes only. All measurements are approximate are for general guidance purposes only and whilst every care has been taken to ensure their accuracy, they should not be relied upon and potential buyers are advised to recheck the measurements