



12 Slattsfield Close, Selsey

Guide Price £240,000 Freehold



# 12 Slattsfield Close

Selsey, Chichester

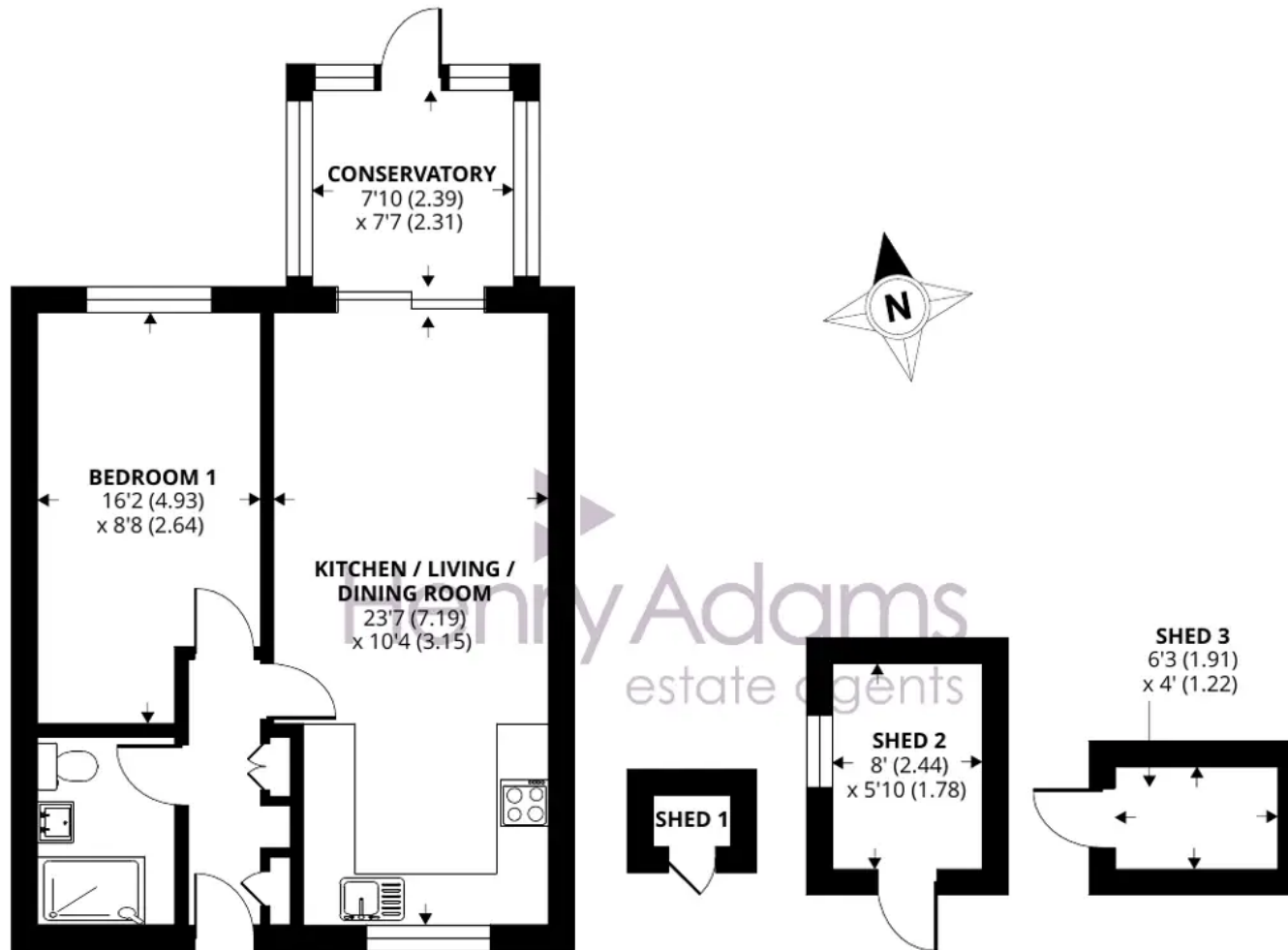
This charming one bedroom bungalow offers a wonderful opportunity for those seeking a cosy and low-maintenance living space. Nestled in a quiet residential area, the property boasts an open plan kitchen/living/dining room, providing a spacious and versatile area for entertaining friends and family. The double bedroom provides ample space for relaxation as well as an area for storage, while a conservatory allows for an extension of the living space. A contemporary shower room completes the interior of this delightful bungalow.

Externally, this bungalow benefits from a lawned garden, a patio area and multiple sheds for storage. There is also an extra section of land outside the rear gate which belongs to the property too. A separate block houses a garage, providing an ideal solution for those needing additional storage or parking. With its practical layout and attractive outside space, this one bedroom bungalow is an outstanding opportunity for first-time buyers, downsizers or investors looking for a peaceful retreat.

Council Tax: B, Freehold, EPC: C

- Open Plan Kitchen/Living/Dining Room
- Double Bedroom
- Conservatory
- Shower Room
- Garage in a Block
- Lawned Garden with Multiple Sheds





## 12 Slattsfield Close, Selsey, Chichester

Approximate Area = 540 sq ft / 50.2 sq m

Shed = 77 sq ft / 7.1 sq m

Total = 617 sq ft / 57.3 sq m

For identification only - Not to scale



Floor plan produced in accordance with RICS Property Measurement Standards incorporating International Property Measurement Standards (IPMS2 Residential). © ntechcom 2024. Produced for Henry Adams. REF: 1078224





## Henry Adams - Selsey

Henry Adams LLP, 122 High Street, Selsey - PO20 0QE

01243 606789

[selsey@henryadams.co.uk](mailto:selsey@henryadams.co.uk)

[www.henryadams.co.uk/](http://www.henryadams.co.uk/)

Agents Note - Our particulars are for guidance only and are intended to give a fair overall summary of the property. They do not form part of any contract or offer, and should not be relied upon as a statement or representation of fact. Measurements, areas and distances are approximate only. Photographs may include lifestyle shots and pictures of local views. No undertaking is given as to the structural condition of the property, or any necessary consents or the operating ability or efficiency of any service, system or appliance. Please ask if you would like further information, especially before you travel to the property.