



FOR SALE

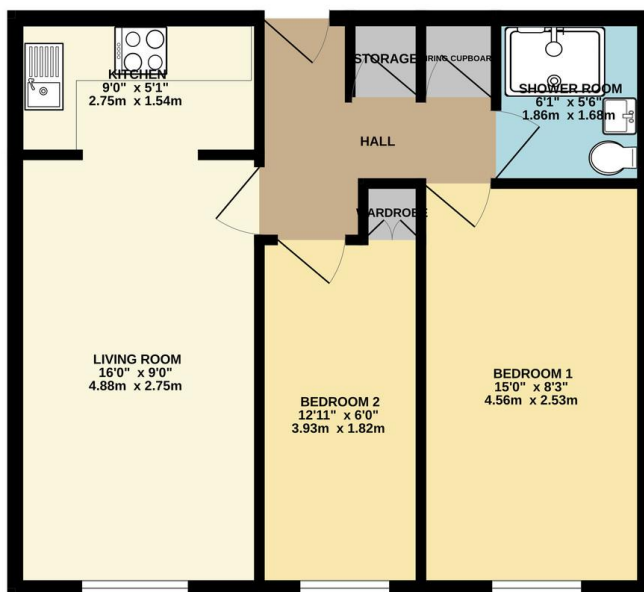
2 Bed Apartment in Stoneygate Road, Leicester LE2 2AD
£120,000

Nestled in a peaceful over 55's development and offered with no chain this first floor two bedroom apartment boasts views over its impressive communal well established grounds. The accommodation comprises of main communal entrance with stairs and lift rising to first floor, main private hallway, lounge, fitted kitchen, two bedrooms, refurbished shower room, communal parking and visitor parking. Call Phillips George to view.



EPC To Follow...

GROUND FLOOR
491 sq.ft. (45.6 sq.m.) approx.



TOTAL FLOOR AREA: 491 sq.ft. (45.6 sq.m.) approx.
Whilst every attempt has been made to ensure the accuracy of the floorplan contained here, measurements of doors, windows, rooms and any other items are approximate and no responsibility is taken for any errors, omissions or mis-statements. This plan is for illustrative purposes only and should be checked as such by any prospective purchaser. The services, systems and appliances shown have not been tested and no guarantee as to their operability or efficiency can be given.
Made with Metropix 12024

- Over 55's Apartment
- No Upward Chain
- Two Bedrooms
- Stoneygate
- Leasehold
- Well Establish Communal Gardens
- Communal Parking
- Visitor Parking

Agents Note: Whilst every care has been taken to prepare these sales particulars, they are for guidance purposes only. All measurements are approximate are for general guidance purposes only and whilst every care has been taken to ensure their accuracy, they should not be relied upon and potential buyers are advised to recheck the measurements.

