

# Phase 2 Floorplans

2, 3 and 4 Bedroom Homes



BURDEROP  
PARK

CITY & COUNTRY



# Welcome to Burderop Park



An exclusive collection of just 58 thoughtfully designed homes, located on the edge of the Marlborough Downs within the North Wessex Area of Outstanding Natural Beauty. Surrounded by an historic estate and acres of parkland, Burderop Park will be a truly special place to live.



# The vision



## 2 Bedroom Homes

- ALBA  
Plots 3, 4 & 5
- SALLOW  
Plots 9 & 12
- HORNBEAM  
Plots 10, 11, 17 & 18
- CEDAR  
Plots 20a & 21

## 3 Bedroom Homes

- BIRCH  
Plots 2, 6 & 19
- LAUREL  
Plots 8 & 13
- PINE  
Plots 22, 23, 24 & 25
- MAPLE  
Plots 1, 7, 14, 15, 16 & 20

## 4 Bedroom Homes

- OAK  
Plots 26 & 27
- REDWOOD  
Plots 30 & 31
- ASH  
Plot 35
- CHESTNUT  
Plot 29

## 4/5 Bedroom Homes

- ROWAN  
Plots 28, 32, 33 & 34

Layout is indicative only, and subject to change.  
Please ask the Sales Team for details.

Layout plan is indicative only and not to scale.



# Elegance & luxury

Homes at Burderop Park have been individually designed to offer the very best in contemporary living.

Versatile, generous living spaces provide the perfect setting to entertain friends and family, to work from home or to simply relax. The state-of-the-art kitchen is the ideal space for elegant dinners or casual gatherings.

Bathrooms and en-suites feature stylish white sanitaryware complemented by polished chrome brassware, while bedrooms are a haven of peace and relaxation. Enjoy luxurious carpets underfoot, and well-designed wardrobe storage to the principal bedroom.



Typical City & Country show home interiors





# Hornbeam

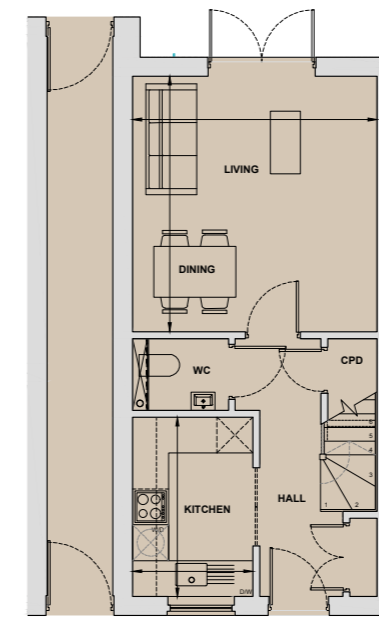
2 Bedroom Home  
Plots 10, 11\*, 17 & 18\*

Living/Dining	4.08m x 4.27m	13'5" x 14'0"
Kitchen	2.00m x 3.00m	6'7" x 9'10"
Bedroom 1	4.10m x 2.48m	13'5" x 8'2"
Bedroom 2	4.10m x 3.65m	13'5" x 12'0"
Total Internal Area	71.2 sq m	766 sq ft

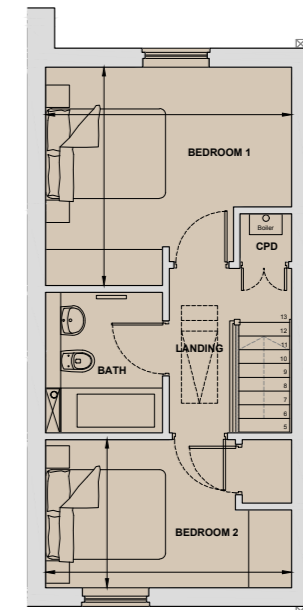
\*Handed to floorplan shown



## 2 Bedroom Homes



Ground Floor



First Floor

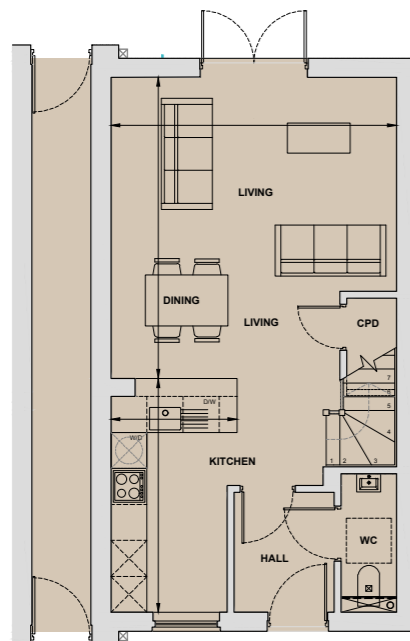
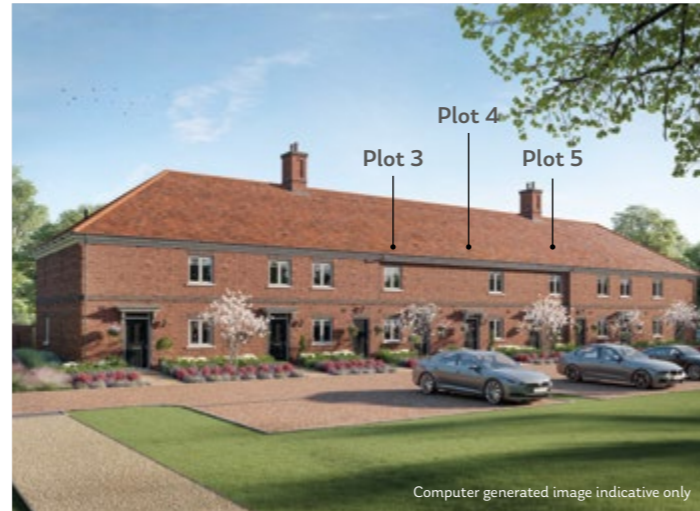


# Alba

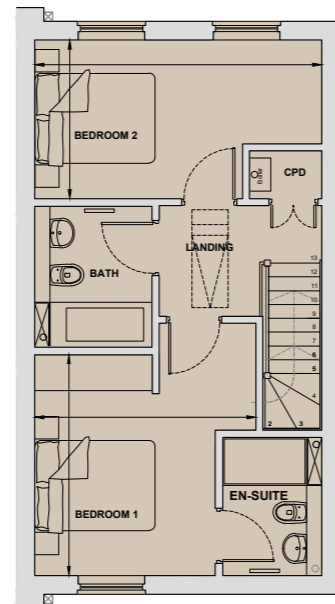
2 Bedroom Home  
Plots 3, 4\* & 5\*

Living/Dining	4.75m x 5.02m	15'7" x 16'6"
Kitchen	2.10m x 3.90m	6'11" x 12'10"
Bedroom 1	3.68m x 3.67m	12'1" x 12'0"
Bedroom 2	4.77m x 2.64m	15'8" x 8'8"
Total Internal Area	85.1 sq m	916 sq ft

\*Handed to floorplan shown



Ground Floor



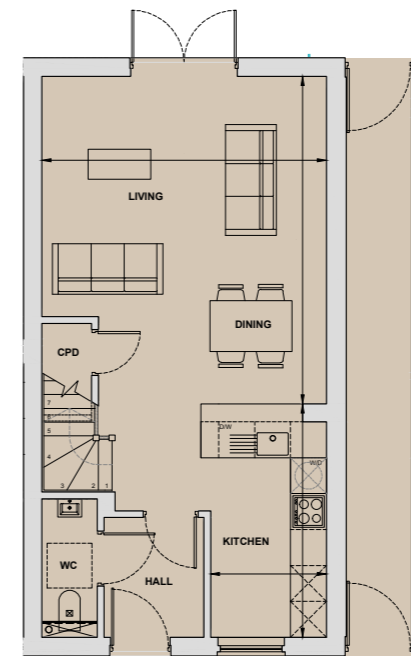
First Floor

# Sallow

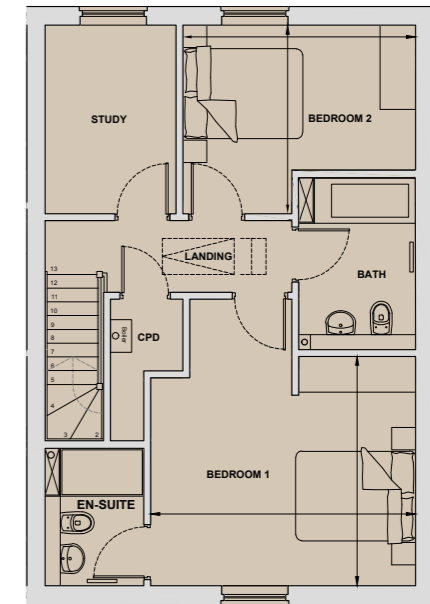
2 Bedroom Home  
Plots 9 & 12\*

Living/Dining	4.75m x 5.47m	15'7" x 17'11"
Kitchen	1.93m x 3.90m	6'4" x 12'10"
Bedroom 1	4.42m x 3.83m	14'6" x 12'7"
Bedroom 2	3.88m x 3.15m	12'9" x 10'4"
Study	2.18m x 3.15m	7'2" x 10'4"
Total Internal Area	102.6 sq m	1,104 sq ft

\*Handed to floorplan shown



Ground Floor



First Floor

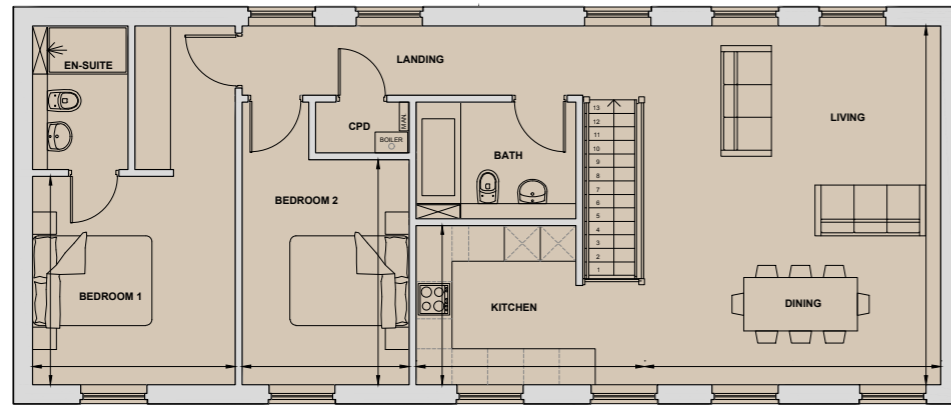


# Cedar

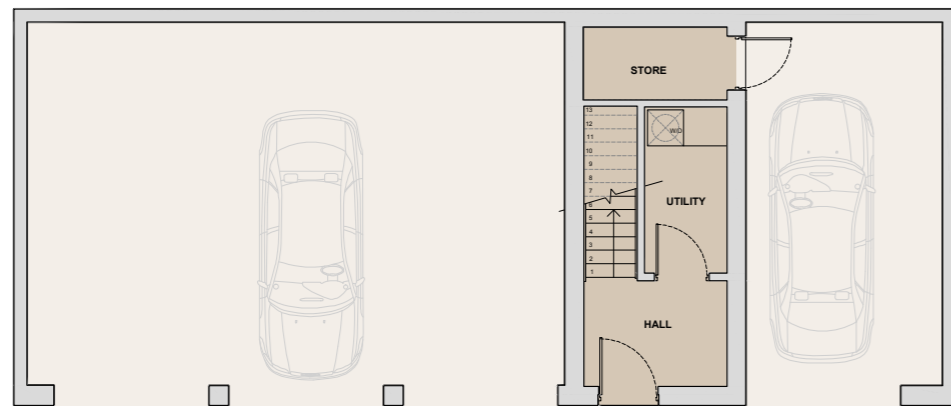
2 Bedroom Home  
Plots 20a & 21\*

Living/Dining	4.96m x 6.00m	16'4" x 19'8"
Kitchen	3.86m x 2.67m	12'7" x 9'8"
Bedroom 1	3.40m x 3.49m	11'2" x 11'5"
Bedroom 2	2.80m x 3.77m	9'2" x 12'4"
<b>Total Internal Area</b>	<b>105.8 sq m</b>	<b>1,139 sq ft</b>

\*Handed to floorplan shown



First Floor



Ground Floor





# Maple

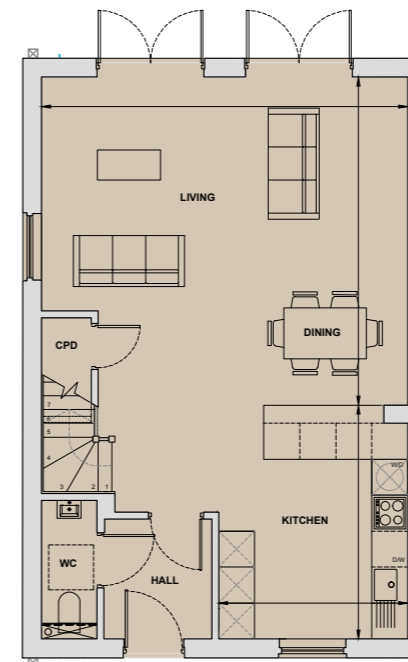
3 Bedroom Home  
Plots 1, 7\*, 14, 15\*, 16 & 20\*

Living/Dining	6.10m x 5.47m	20'0" x 17'11"
Kitchen	3.15m x 3.90m	10'4" x 12'9"
Bedroom 1	4.33m x 3.38m	14'2" x 11'1"
Bedroom 2	3.22m x 3.39m	10'7" x 11'1"
Bedroom 3	2.76m x 3.39m	9'1" x 11'1"
Total Internal Area	114.5 sq m	1,232 sq ft

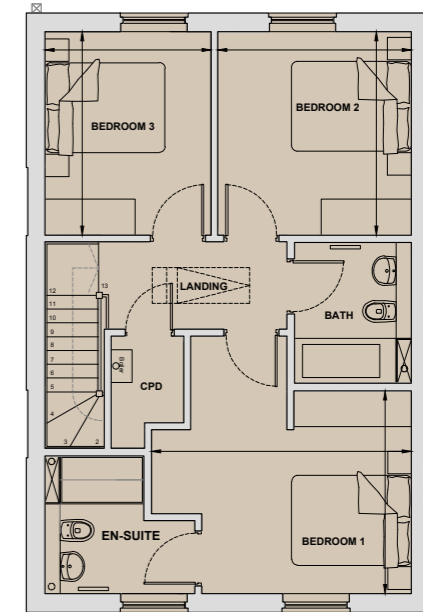
\*Handed to floorplan shown



## 3 Bedroom Homes



Ground Floor



First Floor

\*No en-suite window to plots 1 & 7

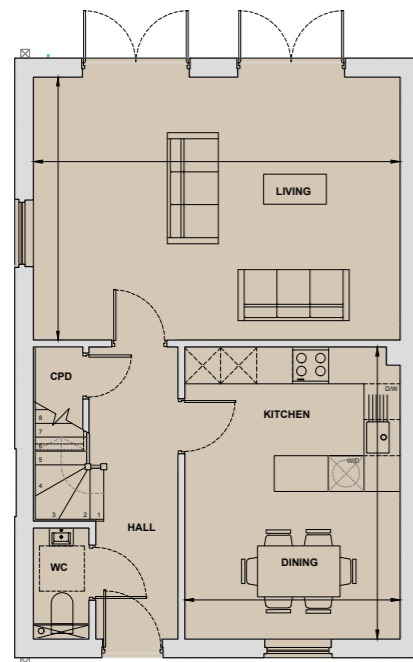


# Laurel

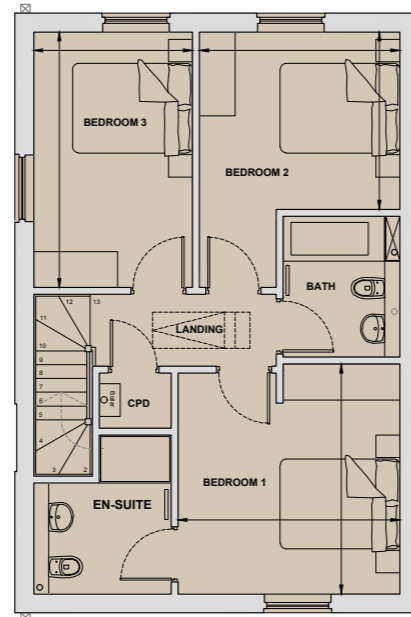
3 Bedroom Home  
Plots 8 & 13\*

Living/Dining	6.10m x 4.39m	20'0" x 14'5"
Kitchen	3.59m x 4.87m	11'9" x 16'0"
Bedroom 1	3.70m x 3.83m	12'2" x 12'7"
Bedroom 2	3.34m x 2.96m	10'11" x 9'9"
Bedroom 3	2.65m x 4.26m	8'8" x 14'0"
<b>Total Internal Area</b>	<b>114.5 sq m</b>	<b>1,232 sq ft</b>

\*Handed to floorplan shown



Ground Floor



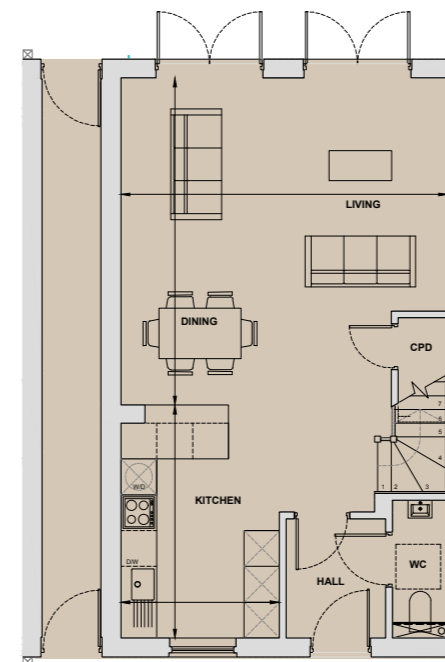
First Floor

# Birch

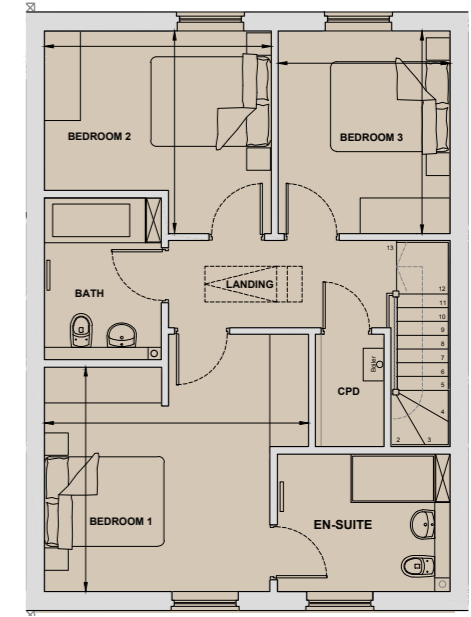
3 Bedroom Home  
Plots 2\*, 6 & 19

Living/Dining	5.46m x 5.47m	17'11" x 17'11"
Kitchen	2.64m x 3.90m	8'8" x 12'10"
Bedroom 1	4.41m x 3.75m	14'6" x 12'4"
Bedroom 2	3.79m x 3.02m	12'5" x 9'11"
Bedroom 3	2.87m x 3.39m	9'5" x 11'1"
<b>Total Internal Area</b>	<b>114.8 sq m</b>	<b>1,236 sq ft</b>

\*Handed to floorplan shown



Ground Floor



First Floor

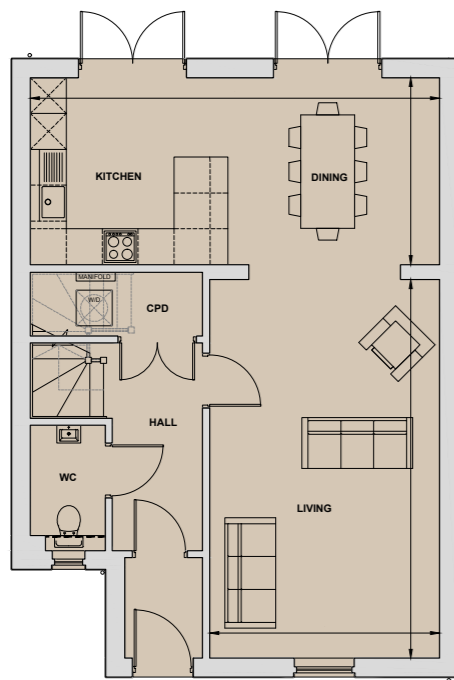


# Pine

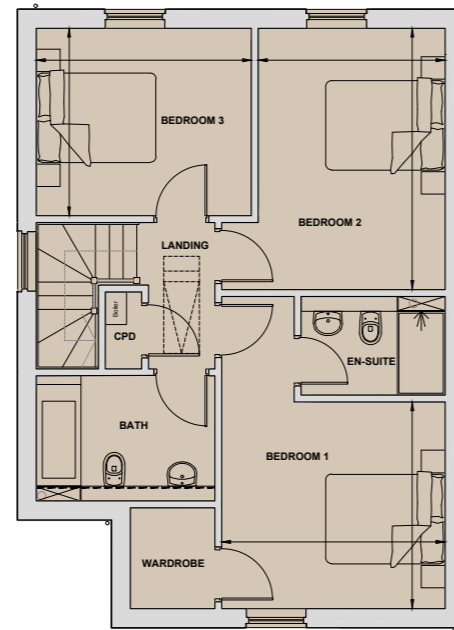
3 Bedroom Home  
Plots 22, 23\*, 24 & 25\*

Living	3.84m x 6.33m	12'7" x 20'10"
Kitchen/Dining	6.84m x 3.13m	22'5" x 10'3"
Bedroom 1	3.74m x 3.46m	12'3" x 11'4"
Bedroom 2	3.13m x 4.37m	10'3" x 14'4"
Bedroom 3	3.60m x 3.14m	11'10" x 10'4"
<b>Total Internal Area</b>	<b>127.2 sq m</b>	<b>1,369 sq ft</b>

\*Handed to floorplan shown



Ground Floor



First Floor





# Oak

4 Bedroom Home  
Plots 26 & 27\*

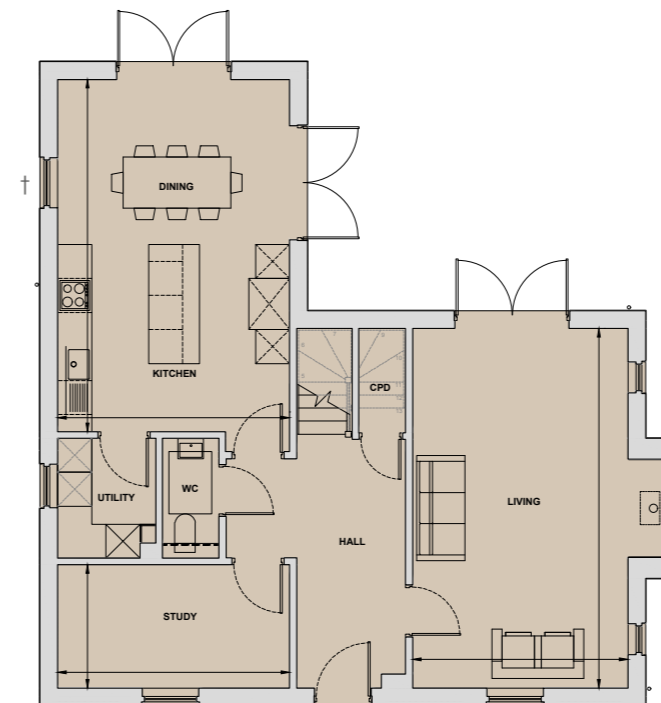
Living	3.80m x 6.34m	12'6" x 20'10"
Kitchen/Dining	4.09m x 6.21m	13'5" x 20'4"
Study	4.09m x 2.17m	13'5" x 7'2"
Bedroom 1	4.09m x 3.29m	13'5" x 10'9"
Bedroom 2	3.81m x 3.32m	12'6" x 10'11"
Bedroom 3	3.98m x 2.90m	13'1" x 9'6"
Bedroom 4	3.44m x 2.90m	13'4" x 9'6"
<b>Total Internal Area</b>	<b>163.2 sq m</b>	<b>1,757 sq ft</b>



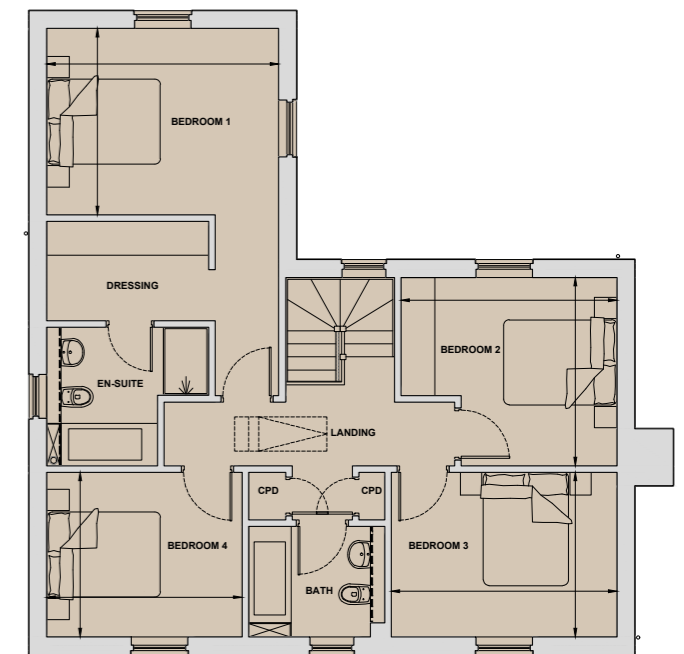
\*Handed to floorplan shown



## 4 & 5 Bedroom Homes



Ground Floor



First Floor

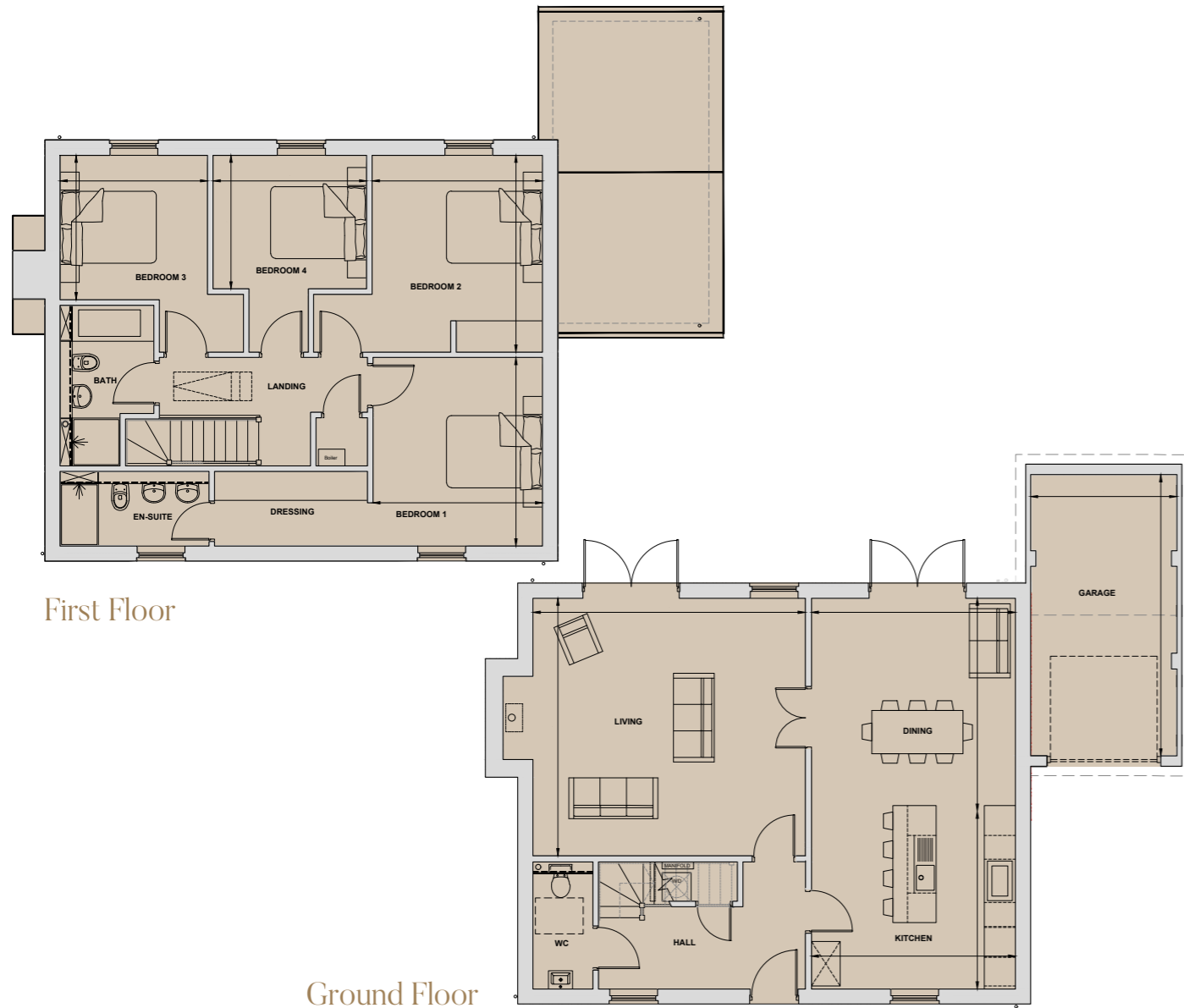
† No window to plot 27



# Chestnut

4 Bedroom Home  
Plot 29

Living	5.67m x 5.37m	18'8" x 17'7"
Kitchen	4.25m x 3.70m	13'11" x 12'2"
Dining	4.25m x 4.44m	13'11" x 14'7"
Bedroom 1	3.53m x 3.92m	11'7" x 12'11"
Bedroom 2	3.55m x 4.10m	11'8" x 13'6"
Bedroom 3	3.07m x 3.01m	10'1" x 9'11"
Bedroom 4	3.20m x 2.79m	10'6" x 9'2"
Garage	3.05m x 5.86m	10'0" x 19'3"
<b>Total Internal Area</b>	<b>163.5 sq m</b>	<b>1,760 sq ft</b>



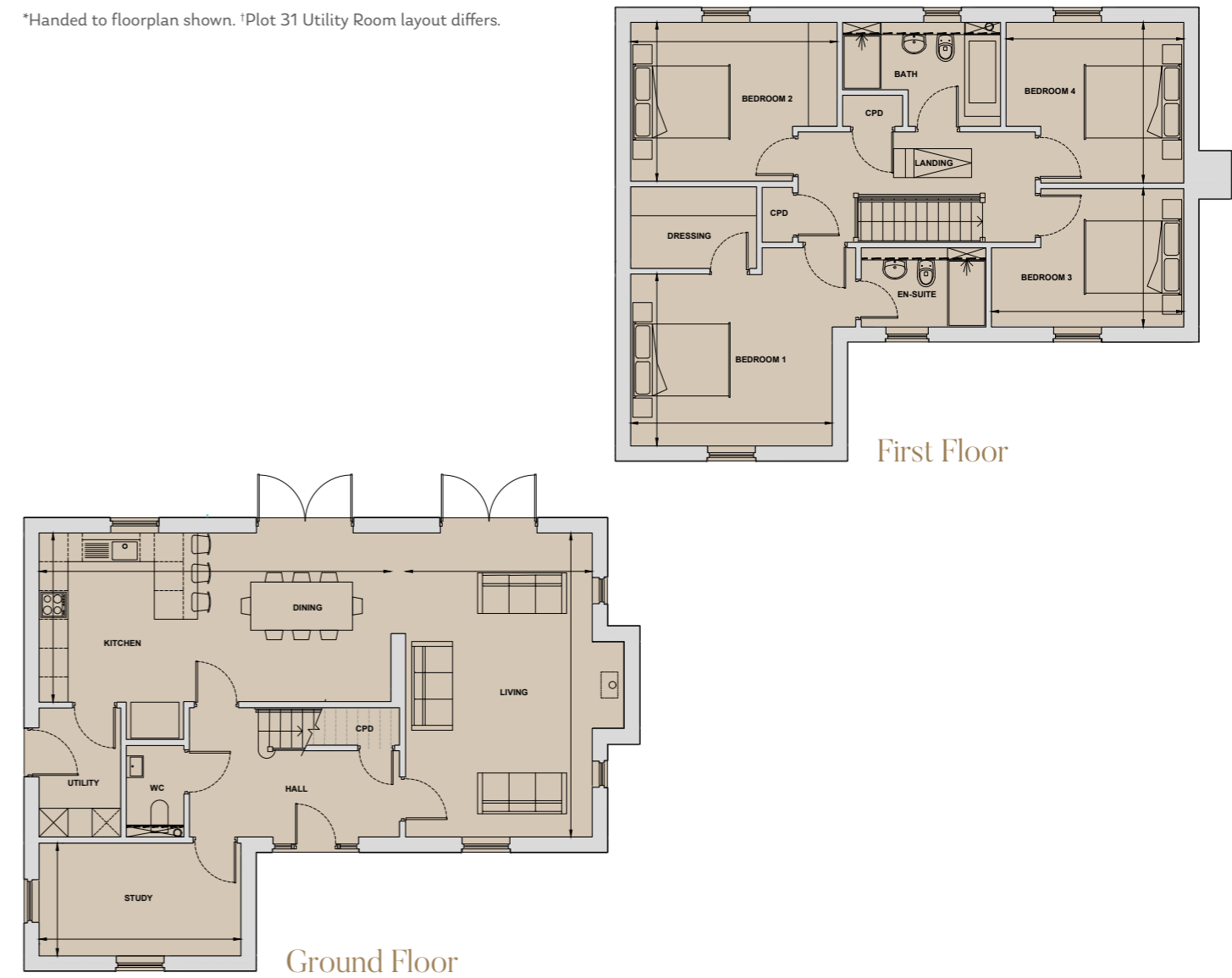
# Redwood

4 Bedroom Home  
Plots 30 & 31\*†

Living	3.89m x 6.34m	12'9" x 20'10"
Kitchen/Dining	7.32m x 3.53m	24'1" x 11'7"
Study	4.20m x 2.35m	13'9" x 7'9"
Bedroom 1	4.20m x 3.58m	13'9" x 11'9"
Bedroom 2	4.30m x 3.31m	14'1" x 10'10"
Bedroom 3	4.00m x 2.90m	13'2" x 9'6"
Bedroom 4	3.70m x 3.34m	12'2" x 11'0"
<b>Total Internal Area</b>	<b>166.7 sq m</b>	<b>1,794 sq ft</b>



\*Handed to floorplan shown. †Plot 31 Utility Room layout differs.

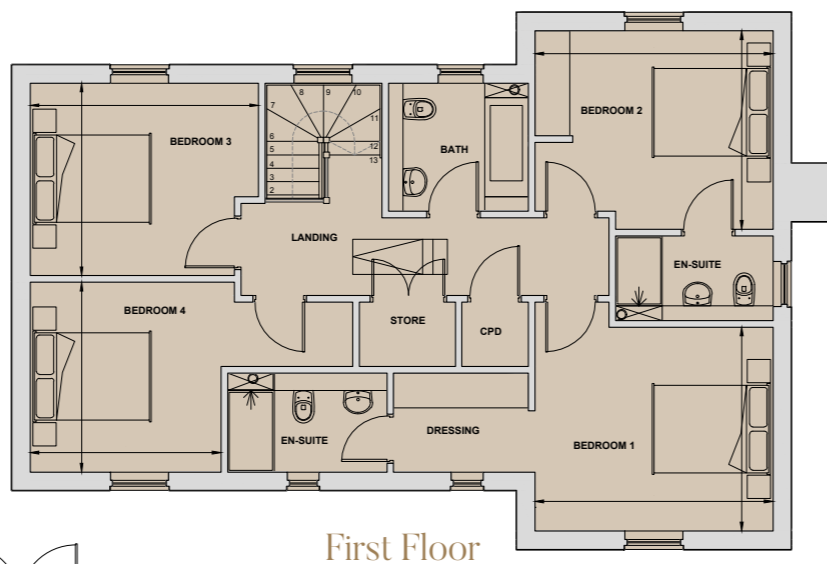




# Ash

4 Bedroom Home  
Plot 35

Living	3.91m x 6.67m	12'10" x 21'11"
Kitchen/Dining/Family	6.39m x 8.59m	21'0" x 28'2"
Bedroom 1	4.09m x 3.50m	13'5" x 11'6"
Bedroom 2	4.09m x 3.41m	13'5" x 11'2"
Bedroom 3	3.92m x 3.30m	12'10" x 10'10"
Bedroom 4	3.27m x 3.26m	10'9" x 10'8"
<b>Total Internal Area</b>	<b>185.8 sq m</b>	<b>2,000 sq ft</b>



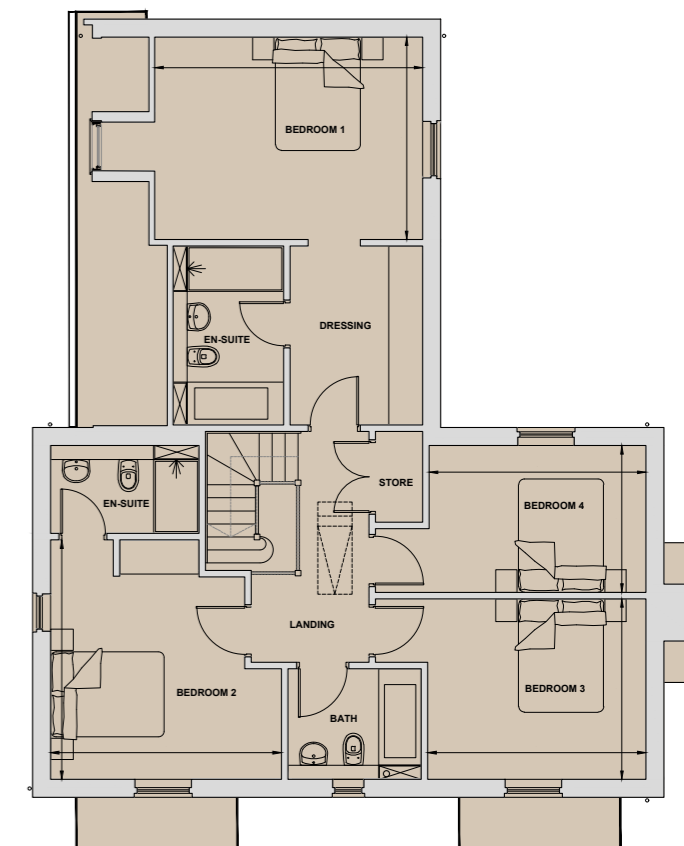
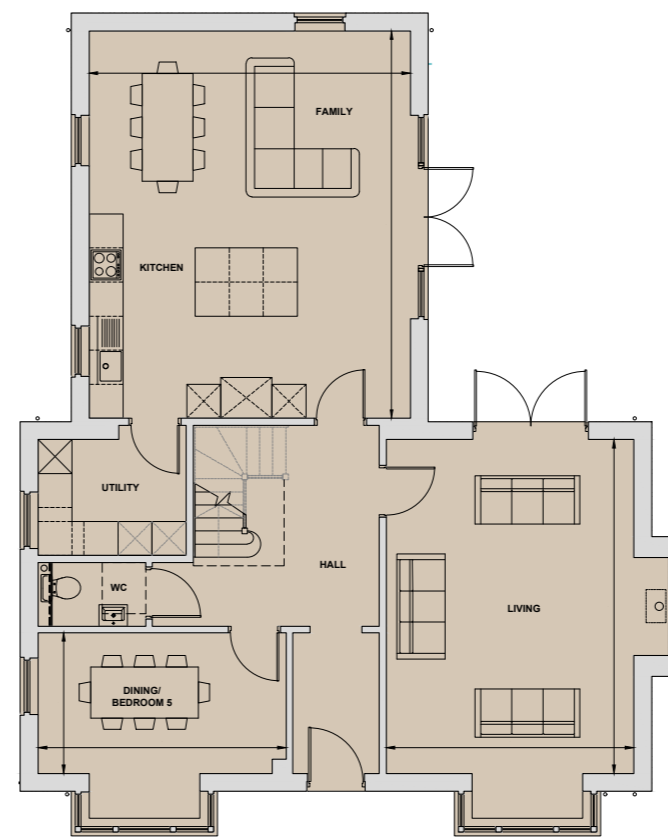
# Rowan

4/5 Bedroom Home  
Plot 28, 32\*, 33\* & 34

Living	4.36m x 5.89m	14'4" x 19'4"
Kitchen/Family	5.66m x 6.83m	18'7" x 22'5"
Dining/Bedroom 5	4.37m x 2.48m	14'4" x 8'2"
Bedroom 1	4.73m x 3.57m	15'6" x 11'9"
Bedroom 2	4.07m x 4.22m	13'4" x 13'10"
Bedroom 3	3.85m x 3.18m	12'8" x 10'5"
Bedroom 4	3.82m x 2.59m	12'7" x 8'6"
<b>Total Internal Area</b>	<b>201.1 sq m</b>	<b>2,165 sq ft</b>



\*Handed to floorplan shown

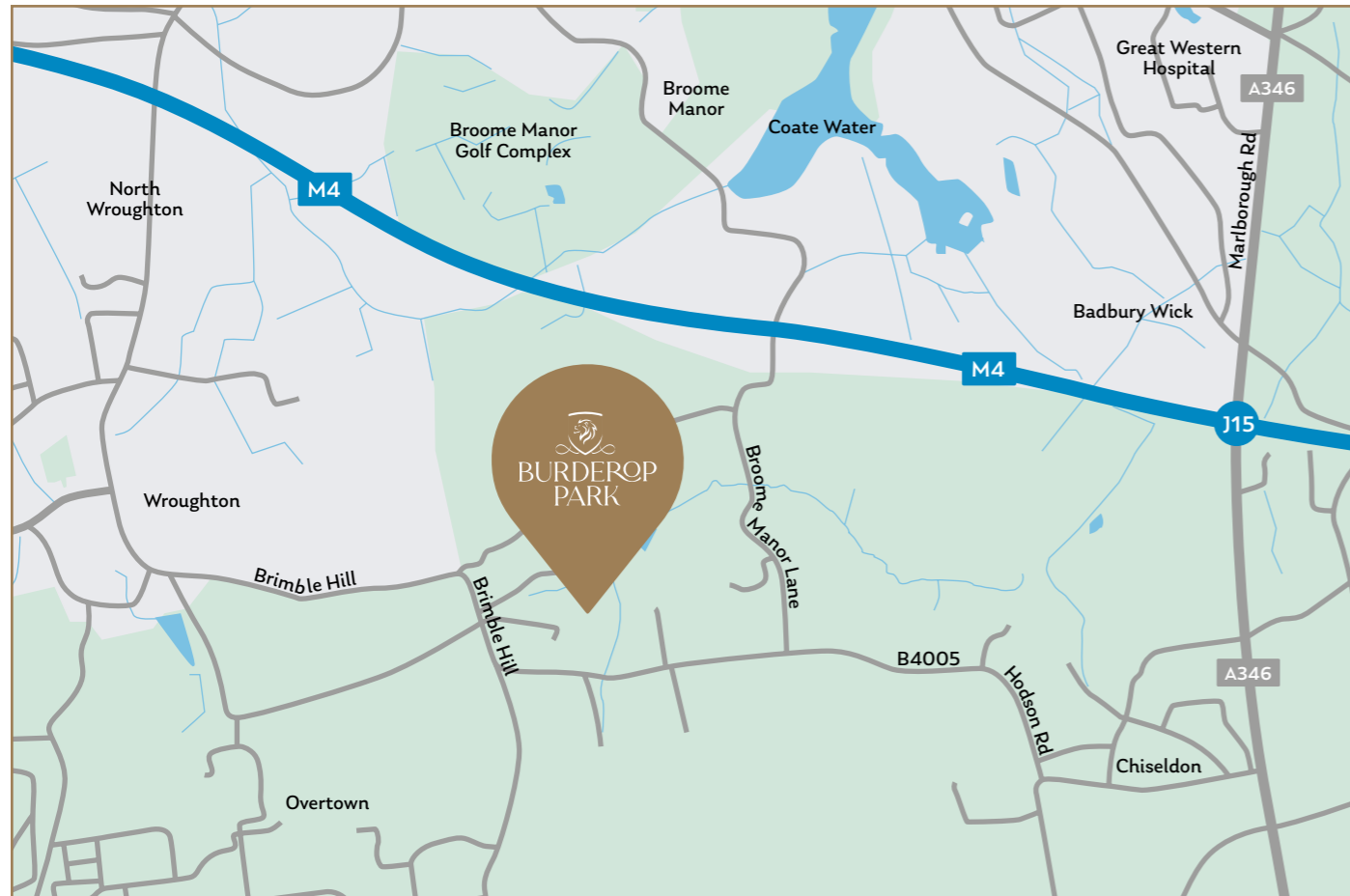






Burderop Park  
Chiseldon  
Swindon  
SN4 0QD

Telephone: 01793 393 021  
Email: burderopark@cityandcountry.co.uk  
Web address: cityandcountry.co.uk/burderopark



CHERISHING  
HERITAGE  
CREATING THE  
FUTURE



DISCLAIMER. CGIs are indicative only. Photography is indicative only and of other City & Country Show Homes. Travel times sources from tfl.gov.uk, Google Maps, and National Rail. Please be aware that the information contained in this document is indicative and intended to act as a guide only to the finished product and the properties available. Due to the City & Country policy of continual improvement, the finished product may vary from the information provided and City & Country reserves the right to amend the specification. The contents herein shall not form any part of any contract or be a representation including such contract. These properties are offered subject to availability. Applicants are advised to contact the appointed agents to ascertain the availability of any particular type of property. These particulars should not be relied upon as statements of fact or representation and applicants must satisfy themselves as to their correctness. Burderop Park is a marketing name and does not form a part of the postal address. This development includes communal land and/or shared facilities. A management company will be set up by City & Country to ensure that these areas are continually managed to a high standard. Product related images contained within this brochure are from other City & Country developments and do not necessarily relate exactly to the specification of Burderop Park. Produced August 2023.





# BURDEROP PARK

CITY & COUNTRY