



4 Horsey Road, West Somerton

£260,000 Freehold

Meticulously maintained 3 bed semi-detached house in West Somerton. A peaceful village location with stunning field views.

Offering a spacious living room, well-equipped kitchen, dining area, three bedrooms and a beautifully landscaped garden.

Boasting a unique feature of stunning field views and free boat mooring. Not to be missed!

Council Tax band: B

Tenure: Freehold

Meticulously maintained 3 bed semi-detached house in West Somerton. A peaceful village location with stunning field views. Offering a spacious living room, well-equipped kitchen, dining area, three bedrooms and a beautifully landscaped garden. Boasting a unique feature of stunning field views and free boat mooring. Not to be missed!

LOCATION

West Somerton is a rural hamlet standing outside the village of Martham in east Norfolk. Martham is a well served village with local amenities, which include a health centre, a newsagent/post office, a library, two public houses, and a playing field. The Norfolk coast is within easy driving distance, while the county capital of Norwich lies some 18 miles to the west.

WEST SOMERTON

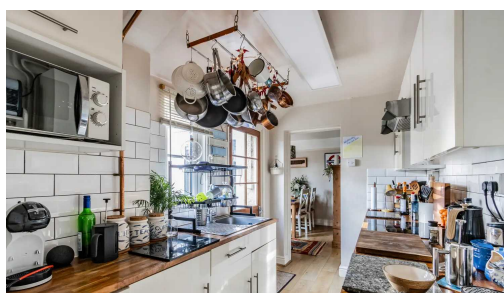
This meticulously maintained three bedroom semi-detached house presents an exceptional opportunity for those seeking a comfortable and well-appointed home.



Meticulously maintained 3 bed semi-detached house in West Somerton. A peaceful village location with stunning field views. Offering a spacious living room, well-equipped kitchen, dining area, three bedrooms and a beautifully landscaped garden. Boasting a unique feature of stunning field views and free boat mooring. Not to be missed!

LOCATION

West Somerton is a rural hamlet standing outside the village of Martham in east Norfolk. Martham is a well served village with local amenities, which include a health centre, a newsagent/post office, a library, two public houses, and a playing field. The Norfolk coast is within easy driving distance, while the county capital of Norwich lies some 18 miles to the west.



Meticulously maintained 3 bed semi-detached house in West Somerton. A peaceful village location with stunning field views. Offering a spacious living room, well-equipped kitchen, dining area, three bedrooms and a beautifully landscaped garden. Boasting a unique feature of stunning field views and free boat mooring. Not to be missed!

LOCATION

West Somerton is a rural hamlet standing outside the village of Martham in east Norfolk. Martham is a well served village with local amenities, which include a health centre, a newsagent/post office, a library, two public houses, and a playing field. The Norfolk coast is within easy driving distance, while the county capital of Norwich lies some 18 miles to the west.

WEST SOMERTON

This meticulously maintained three bedroom semi-detached house presents an exceptional opportunity for those seeking a comfortable and well-appointed home. Nestled in a quiet village with stunning field views, this property offers a peaceful retreat combined with convenient access to local amenities.

The ground floor of this charming residence comprises a warm and inviting living room, perfect for relaxation and entertaining guests. The well-organised kitchen provides ample space for culinary pursuits and features modern appliances, ensuring ease and efficiency in meal preparation. Adjoining the kitchen is a spacious dining area, ideal for enjoying family meals or hosting social gatherings. The family bathroom completes this level.

Ascending the staircase, three generously proportioned bedrooms await, each offering an abundance of space for rest and relaxation. Every bedroom boasts a welcoming ambience and benefits from an abundance of natural light, creating an inviting atmosphere to unwind after a long day.

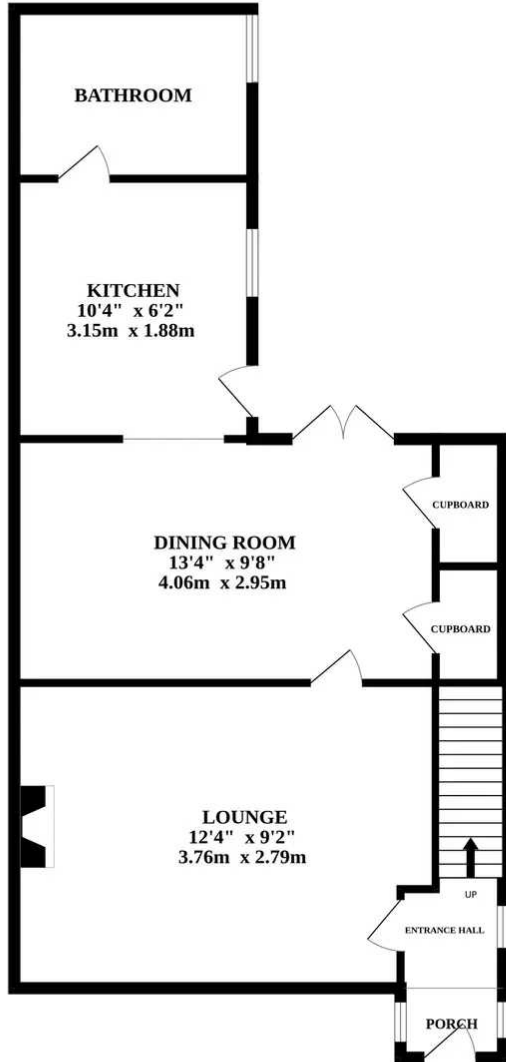
The property's unique feature includes stunning field views, providing a tranquil backdrop from multiple angles.

For those with a love for boats, this property also offers a rare opportunity with a free boat mooring. Furthermore, the beach is within walking distance, enabling one to enjoy the coastal lifestyle and soak up the sun in the picturesque surroundings.

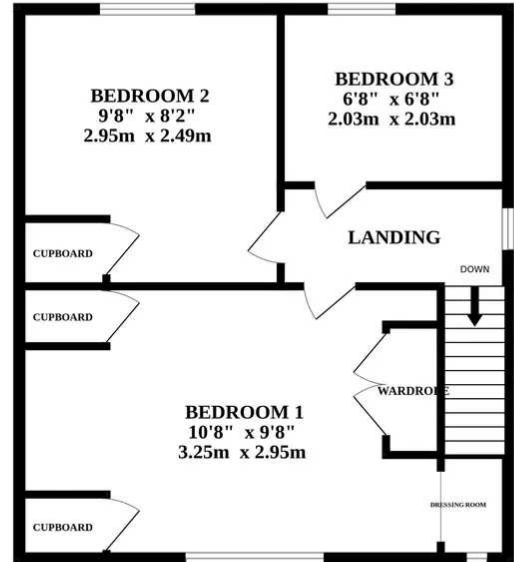
Outside, a large landscaped garden offers a wonderful space for outdoor enjoyment, whether it be hosting barbeques or simply



GROUND FLOOR



1ST FLOOR



Whilst every attempt has been made to ensure the accuracy of the floorplan contained here, measurements of doors, windows, rooms and any other items are approximate and no responsibility is taken for any error, omission or mis-statement. This plan is for illustrative purposes only and should be used as such by any prospective purchaser. The services, systems and appliances shown have not been tested and no guarantee as to their operability or efficiency can be given.
Made with Metropix ©2024

You can include any text here. The text can be modified upon generating your brochure.

You can include any text here. The text can be modified upon generating your brochure.

